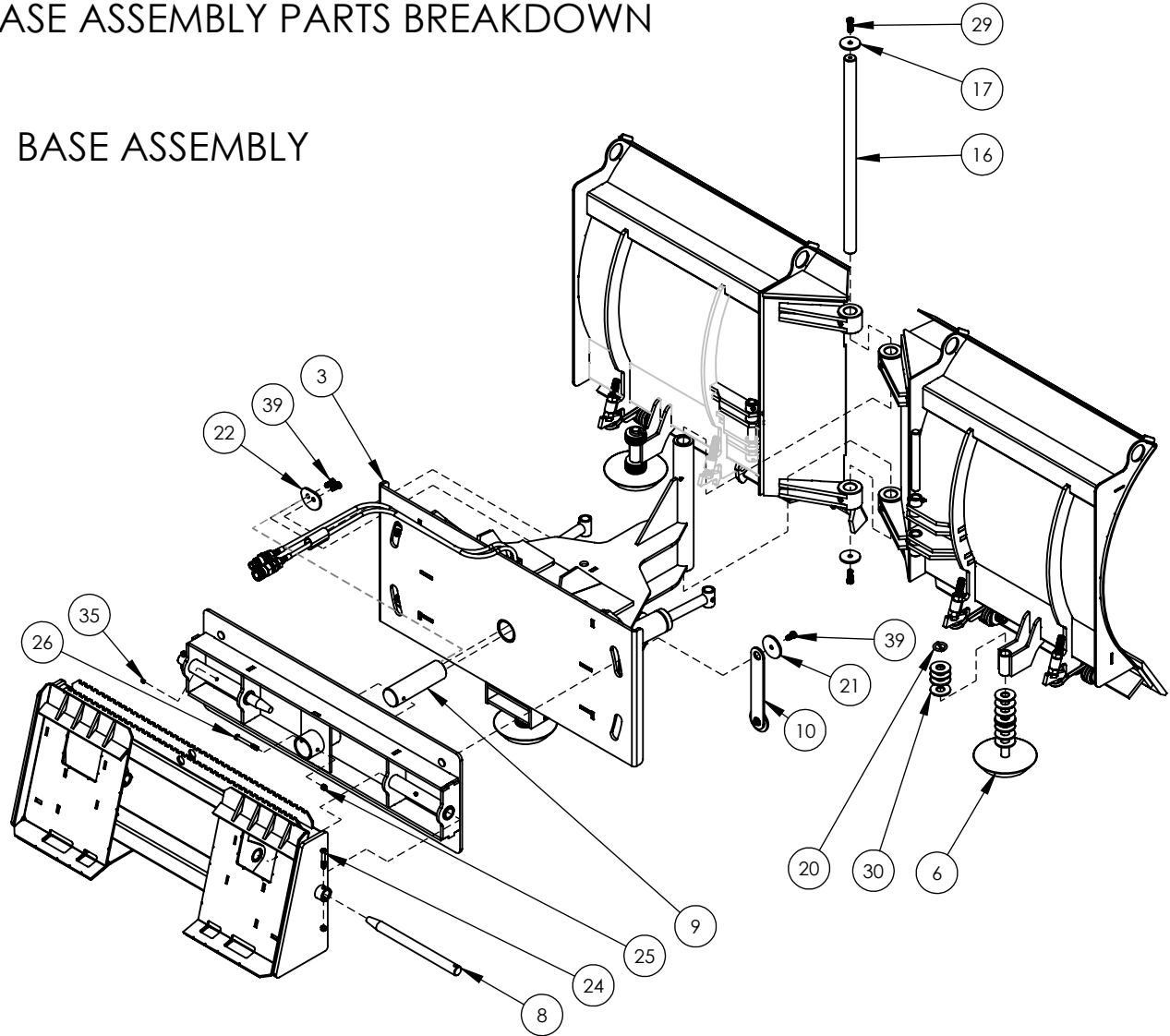
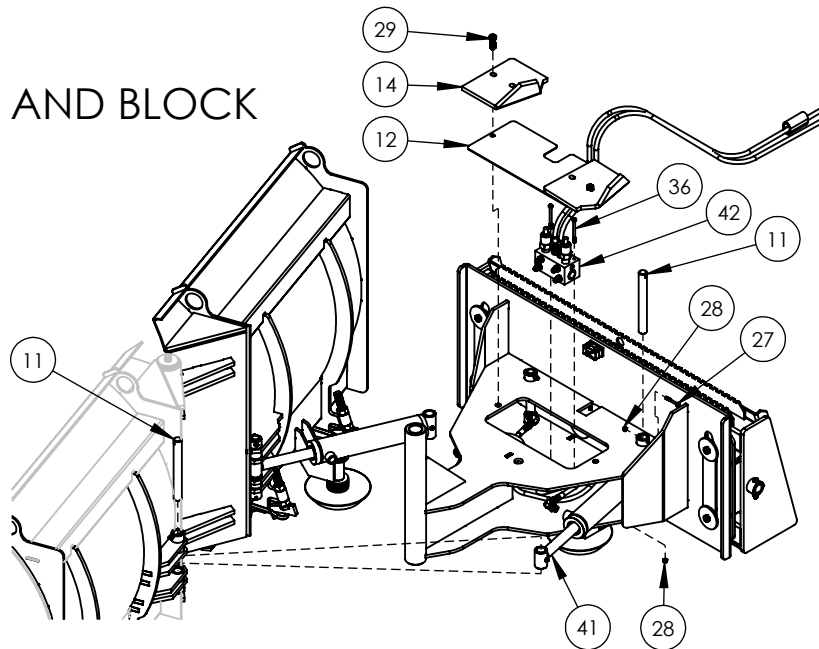


# 710-1-0001 V-BLADE BASE ASSEMBLY PARTS BREAKDOWN

## BASE ASSEMBLY



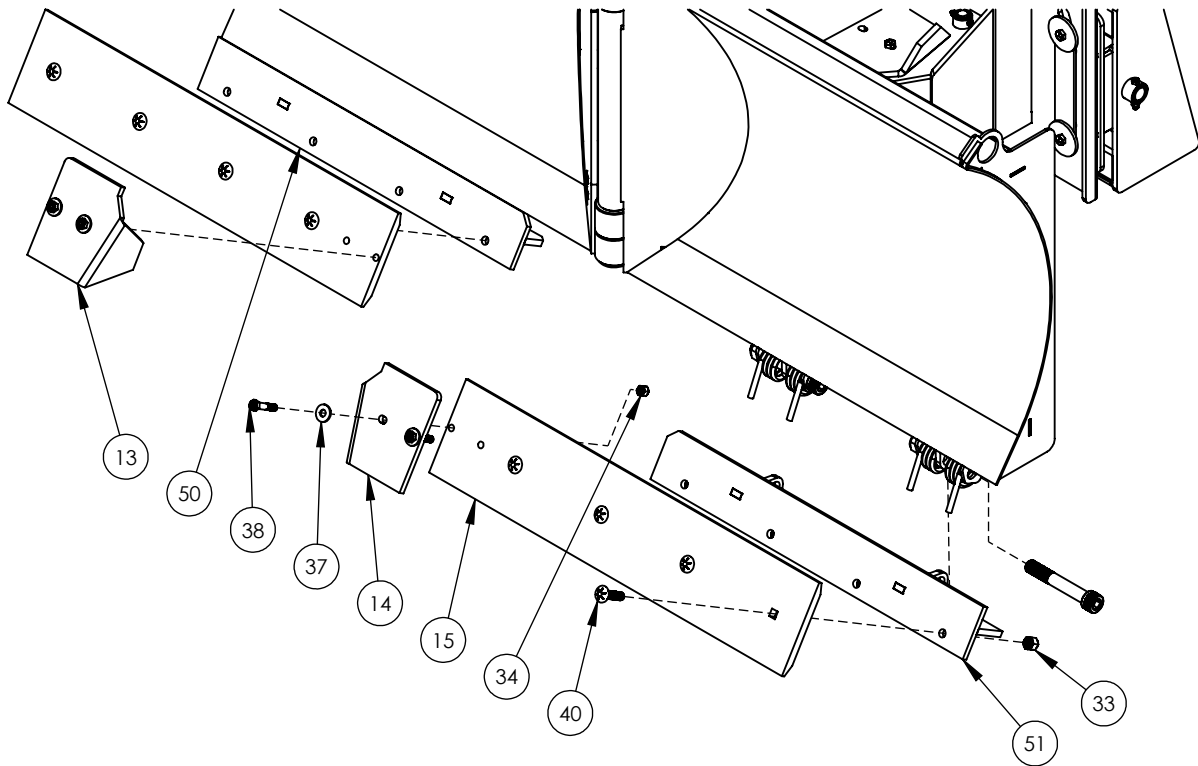
## CYLINDER AND BLOCK



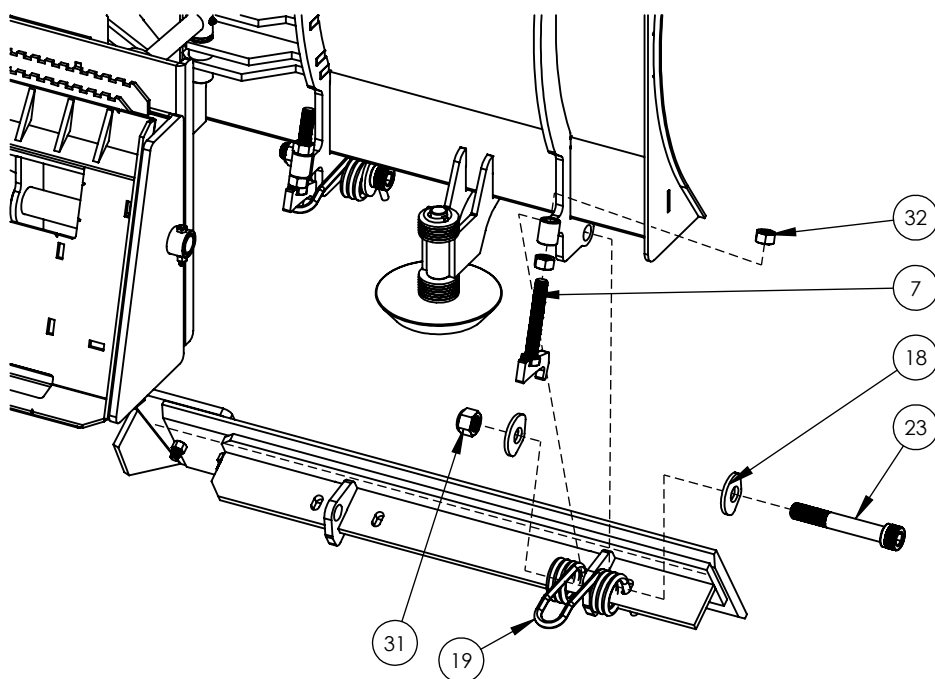
# TRIP EDGE ASSEMBLY

## PARTS BREAKDOWN

### TRIP EDGE ASSEMBLY



### TRIP EDGE SPRING ASSEMBLY



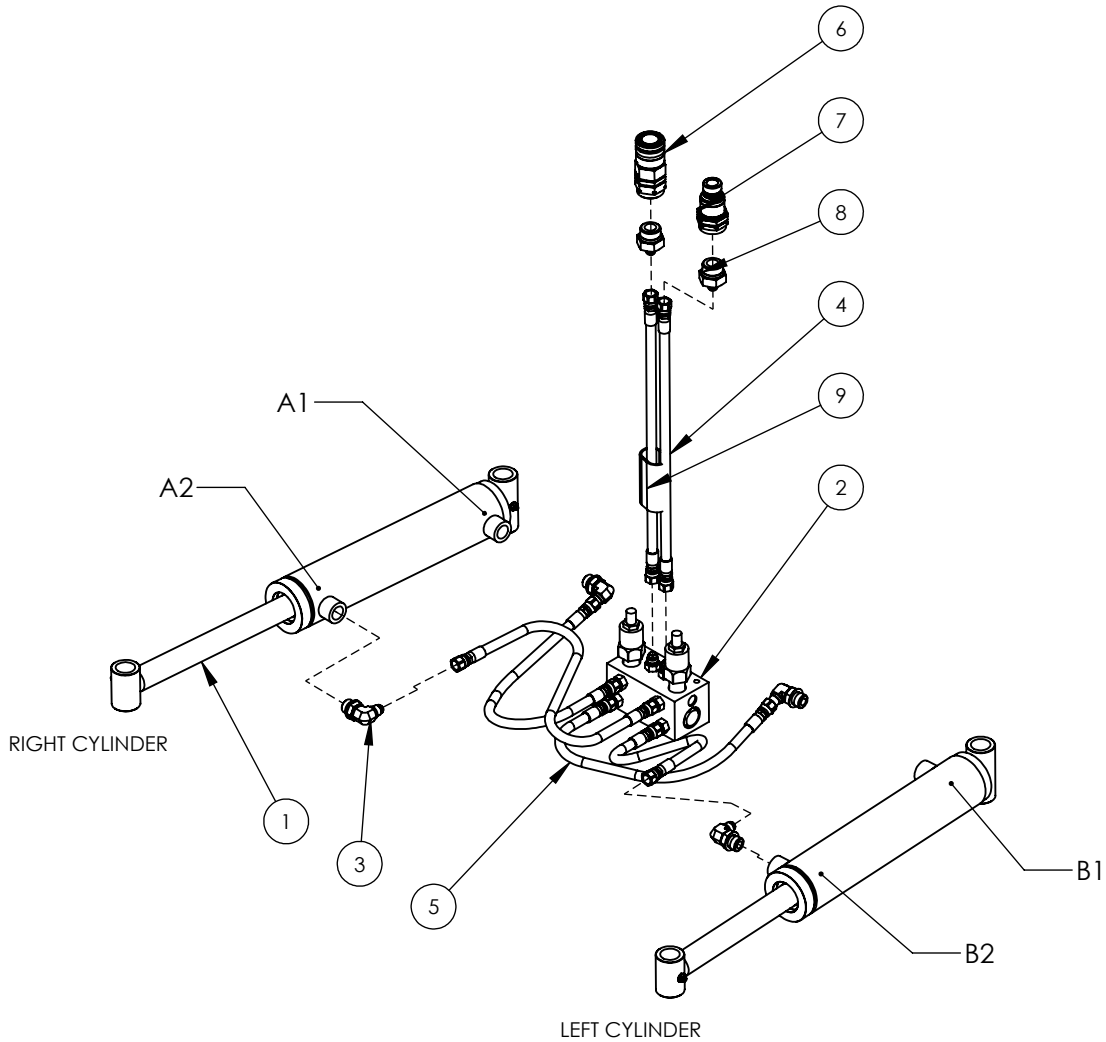
# 710-1-0001 V-BLADE

## PARTS BREAKDOWN

ITEM NO.	PART NUMBER	DESCRIPTION	QTY.
1	AU-02-41000	QUICKTACH ASSEMBLY	1
2	AU-02-41001	PIVOT ASSEMBLY	1
3	AU-02-41002	BODY	1
4	*AU-02-41005-84	LEFT WING	1
5	*AU-02-41003-84	RIGHT SIDE WING	1
6	AU-02-41010	FOOT, LARGE	3
7	AU-02-51070	SPRING ADJUSTMENT BOLT	4
8	AU-03-41042	HORIZONTAL PIVOT PINS	2
9	AU-03-41040	QT PIVOT PIN	1
10	AU-03-41048	KEEPER PLATES	2
11	AU-03-41057	CYLINDER PIN	4
12	AU-03-41049	COVER	1
13	AU-03-41062	RIGHT BLADE SHOE	2
14	AU-03-41063	LEFT BLADE SHOE	2
15	*AU-03-41023-84	CUT EDGE	2
16	AU-03-41056	BLADE PIVOT PIN	1
17	AU-03-41059	WASHERS	2
18	AU-03-41076	WASHER	10
19	AU-03-41073	TORSION SPRING	5
20	670-3-0042	LINCH PIN, 3/16" DIAMETER, 1-1	3
21	612-3-0170	BLADE SHIPPING RETAINER WASHER	4
22	AU-03-41084	WASHER	1
23	HW-1-8X6.50 SHCS	BLACK-OXIDE ALLOY STEEL SHCS	5
24	HW-.375-16X2.5G5	3/8-16 X 2.50 GRADE 5 BOLT	2
25	HW-.375-16NYL	3/8 - 16 NYLOCK NUT	3
26	HW-.375-16X3.50G5	3/8"-16 X 3 1/2" GRADE 5 BOLT	1
27	HW-.25-20X2.0G5	1/4 X 2.00 BOLT	4
28	HW-.25-20NYL	1/4 20 NYLOCK	6
29	HW-.500-13X1.50G5	1/2"-13X1 1/2"	4
30	HW-1.0FW	1 FLAT WASHER USS ZINC	38
31	HW-1-8NYLG8	1"-8 GRADE 8 NYLOCK NUT	5
32	HW-.750-10HNG8	3/4-10 HEX NUT GRADE 8	8
33	HW-.625-11NYL	5/8"-11 NYLOCK NUT	8
34	HW-.500-13NYL	1/2-13 NYLOCK NUT ZINC	4
35	HW-.125-NPTSGF	GREASE ZERK	9
36	HW-.25-20X3.25G5	1/4"-20X3.25 GRADE 5	2
37	HW-.500FW	1/2" FLAT WASHER	4
38	HW-.500-13X2.50G8	1/2"-13 X 2 1/2" GRADE 8 BOLT	4
39	HW-.500-13X1.00G5	1/2"-13X1" GRADE 5 BOLT	6
40	HW-.625-11X2.5CBG8	5/8"-11X2-1/2" CARRIAGE BOLT G8	8
41	657-02-0010	2.5 X 10 CYLINDER	2
42	AU-02-41007-ASM	ASSEMBLED SEQUENCE BLOCK	1
50	AU-02-41086-84	84 TRIP EDGE RIGHT	1
51	AU-02-41085-84	84 TRIP EDGE LEFT	1

\*PART NUMBER CHANGES WITH DIFFERENT WIDTH MODELS

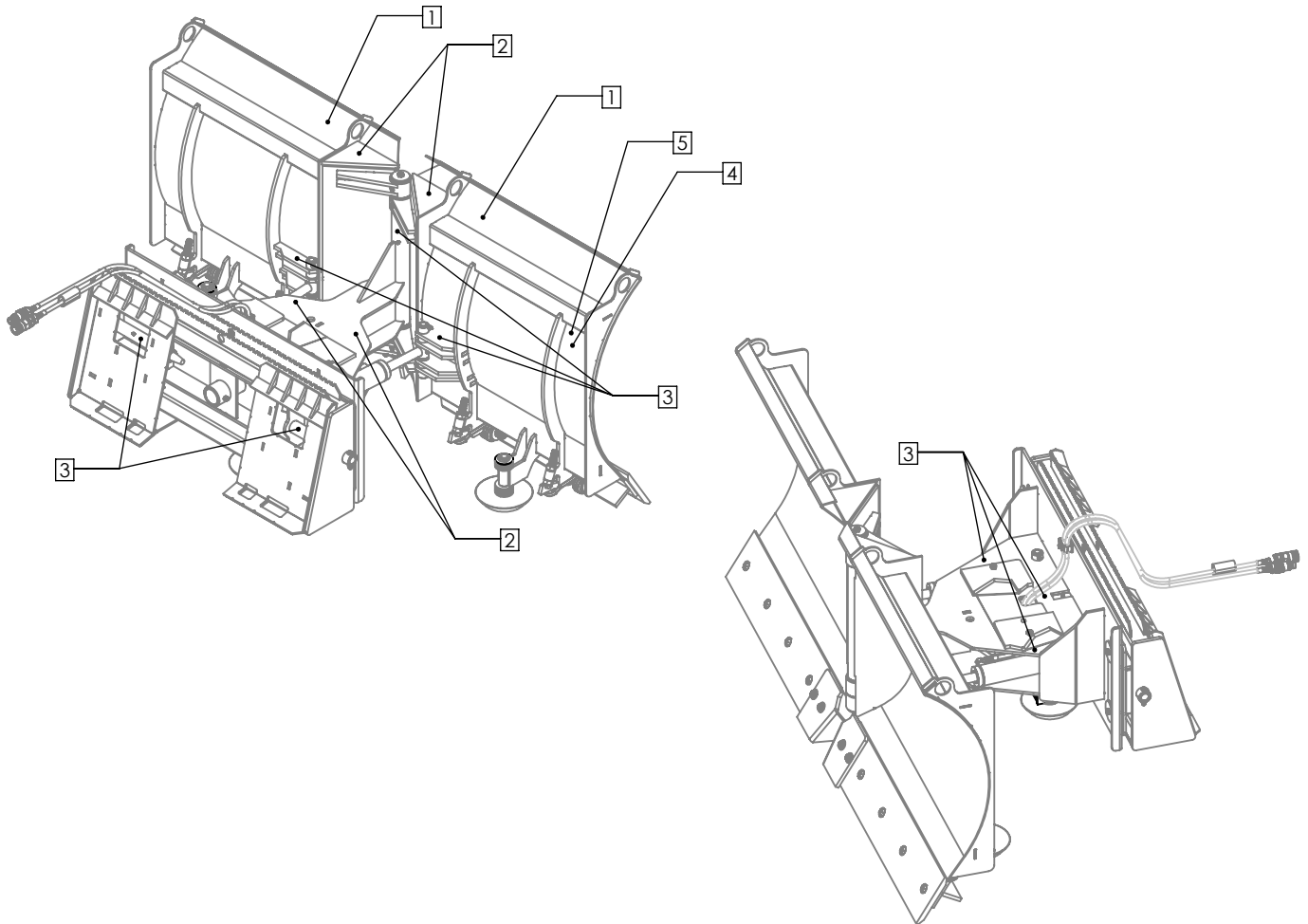
# 710-1-0001 V-BLADE HYDRAULICS BREAKDOWN



ITEM NO.	PART NUMBER	DESCRIPTION	QTY.
1	657-02-0010	2.5 X 10 CYLINDER	2
2	AU-02-41007-ASM	ASSEMBLED SEQUENCE BLOCK	1
3	H250-FT2062-8-6S	8 MORB X 6MJIC 90DEG	4
4	H250-80-6J6J	1/4" X 80" HOSE -6FJIC -6FJIC	2
5	AU-03-0510	18.25" HOSE	4
6	AU-03-9990-12-12	1/2" FEMALE FLAT FACE COUPLER	1
7	AU-03-9991-12-12	1/2" MALE FLAT FACE COUPLER	1
8	H375-FT21-6-12	6MJIC-12MORB	2
9	HSL250	.250" HOSE SLEEVE	1

# 710-1-0001

## DECAL LOCATIONS



DECAL NO.	PART NUMBER	DESCRIPTION	QTY
1	DECAL-3-0005	2.50X10 "SKID PRO" CLEAR BACKI	2
2	DECAL-3-0015	DANGER KEEP HANDS CLEAR DECAL	4
3	DECAL-3-0019	"GREASE DAILY" .75X2	8
4	*DECAL-3-0035	84" SILVER	1
5	DECAL-3-0124	710-1-0001 SERIAL DECAL	1

\*PART NUMBER CHANGES WITH DIFFERENT WIDTH MODELS