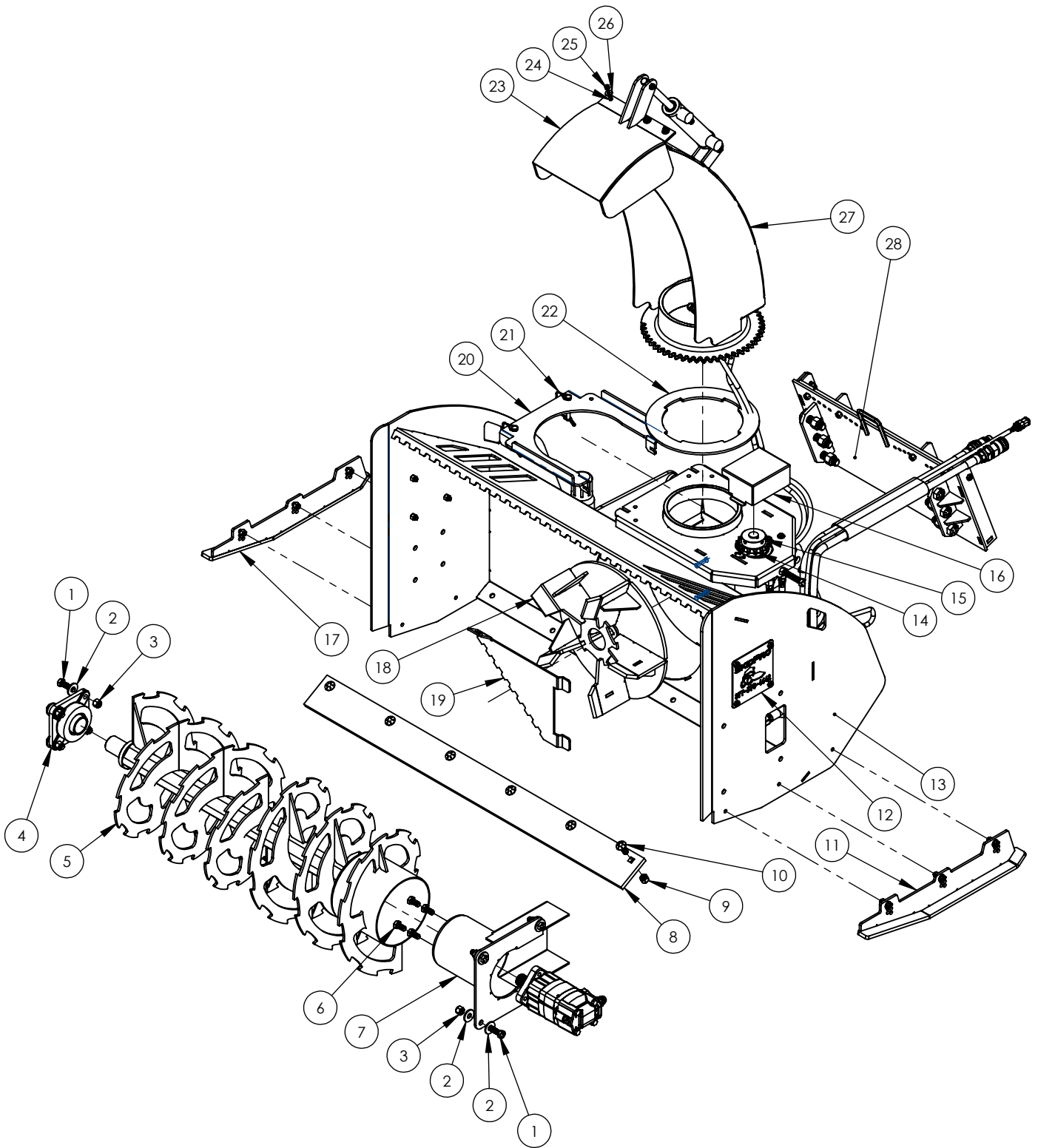


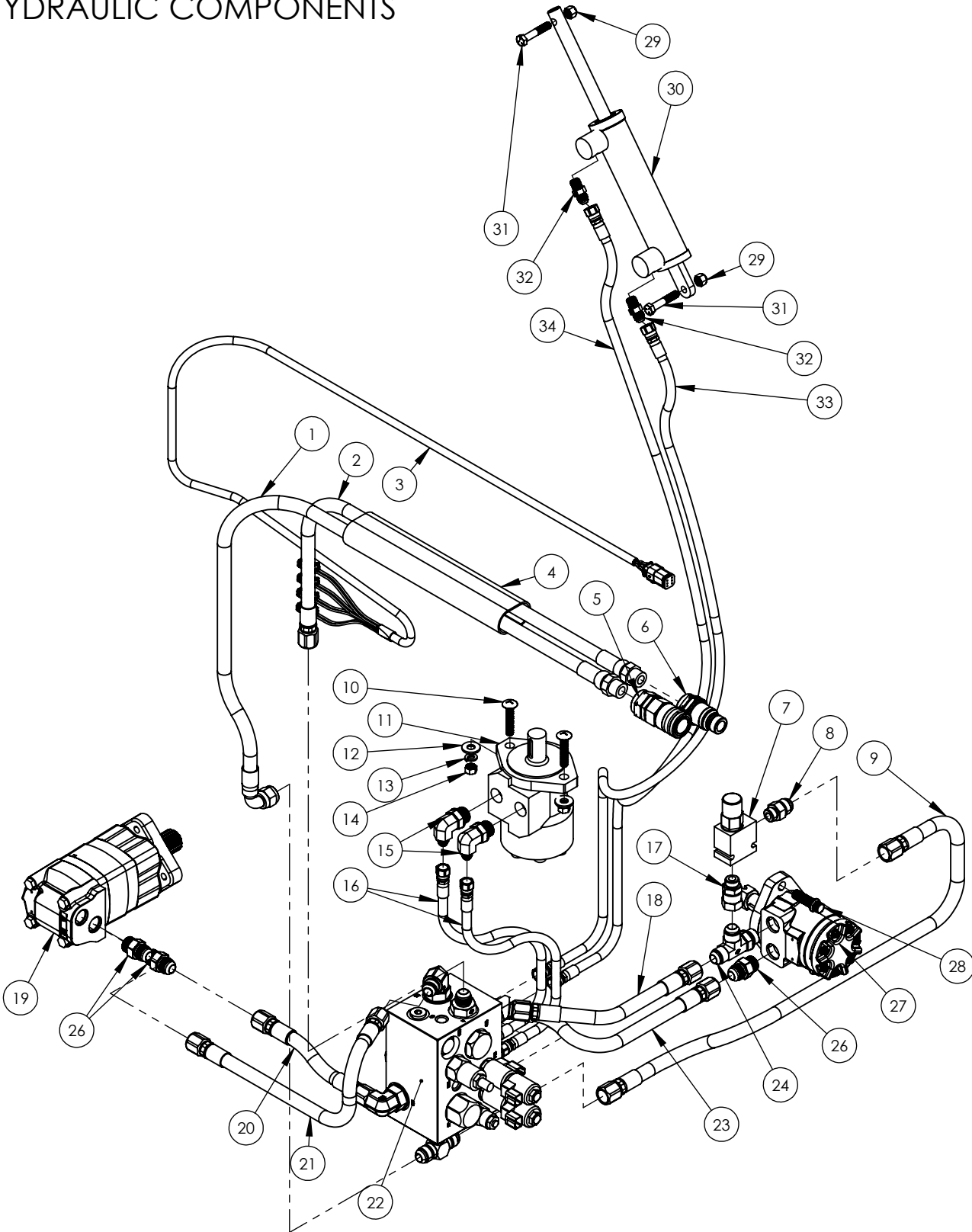
900-01-0001
48" MINI SNOW BLOWER



900-01-0001**48" MINI SNOW BLOWER - PARTS BREAKDOWN**

ITEM NO.	PART NUMBER	DESCRIPTION	QTY.
1	HW-.500-13X1.75G5	1/2"-13 X 1-3/4" GRADE 5 BOLT	8
2	HW-.500FW	1/2" FLAT WASHER	12
3	HW-.500-13NYL	1/2-13 NYLOCK NUT ZINC	8
4	AU-03-1625-1.750	4 BOLT 1.75 FLANGE BEARING	1
5	900-02-0004	48" AUGER ASM	1
6	HW-M12X1.75X25HH	12X1.75X25MM HEX HD 8.8	4
7	900-02-0007	AUGER MOTOR MOUNT	1
8	900-03-0018	48" SQUARE CUTTING EDGE	1
9	HW-.500-13NYLG8	1/2"-13 NYLOCK NUT G8	6
10	HW-.500-13X1.5CBG8	1/2"-13X1.5 CARRIAGE BOLT G8	6
11	900-02-0005	SKID SHOE - LH	1
12	SP-2019-4	SKIDPRO PLACARD	2
13	900-02-0001	48" MINI BLOWER BODY	1
14	AU-03-5114	SPACER	1
15	AU-03-5042	ROTATION SPROCKET	1
16	AU-03-1839	ROTATION GUARD	1
17	900-02-0006	SKID SHOE - LH	1
18	900-02-0003	16" FAN ASM	1
19	900-03-0021	16" FAN RESTRICTOR	1
20	AU-03-1836	CHUTE HOLD-DOWN BRACKET	1
21	AU-03-20056	WIRE-LOCK CLEVIS PIN, SQUARED	2
22	AU-03-1837	CHUTE SPACER	1
*22	AU-03-1837-060	CHUTE SHIM, 060	-
23	AU-02-1757	CHUTE TOP	1
24	HW-.25-20X1.0G5	1/4"-20X1" GRADE 5 BOLT	7
25	HW-.25-20NYL	1/4"-20 NYLOCK NUT	7
26	HW-.250FW	1/4" USS FLAT WASHER	10
27	AU-02-1502-4	CHUTE	1
28	787-02-0003	CII-COMMON IND INTERFACE ASM	1
*28	787-02-0010-ASM	MQT-BOBCAT STYLE QT ASM	-
*DENOTES ALTERNATE OPTION			

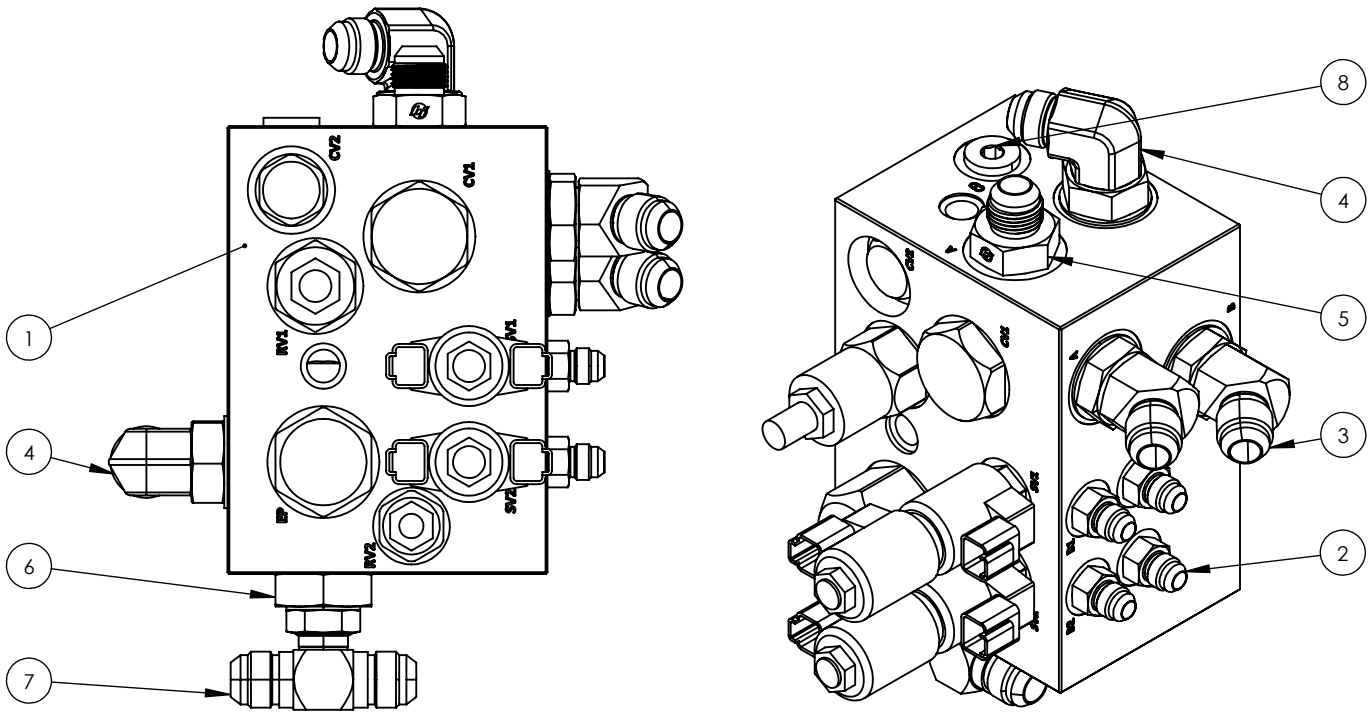
900-01-0001
HYDRAULIC COMPONENTS



900-01-0001**HYDRAULIC COMPONENTS - PARTS BREAKDOWN**

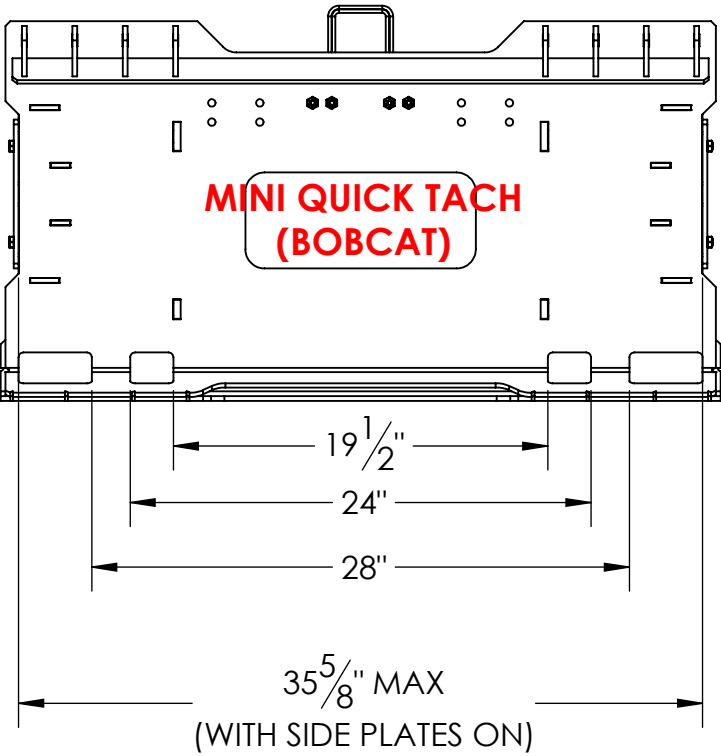
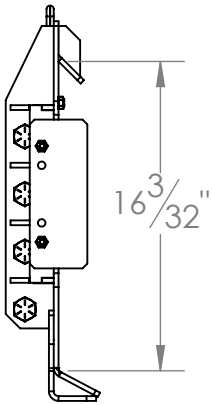
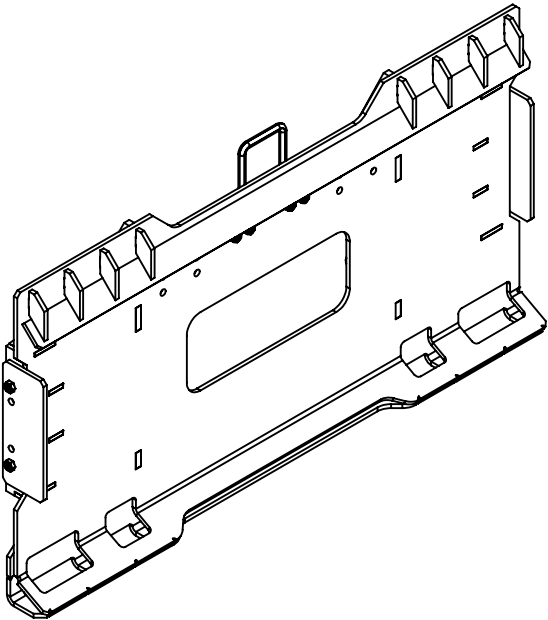
ITEM NO.	PART NUMBER	DESCRIPTION	QTY.
1	H500-80-10J9012MORB	1/2" X 80" HOSE -10 FJIC90 X -12 MORB	1
2	H500-69-10J12MORB	1/2" X 69" HOSE -10 FJIC X -12 MORB	1
3	AU-03-1775	4 PLUG HARNESS	1
4	HSL500	HOSE SLEEVE	1
5	AU-03-9990-12-12	1/2" FEMALE COUPLER	1
6	AU-03-9991-12-12	1/2" MALE COUPLER	1
7	H-RVPS-10-N-T08TX-30	RELIEF VALVE 2250 PSI	1
8	H500-FT21-10-08	-10 MJIC X -8 MORB ADAPTER	1
9	H500-39-10J10J	1/2" X 39" HOSE -10 FJIC X -10 FJIC	1
10	HW-.375-16X2CB	3/8"-16 X 2" CARRIAGE BOLT	2
11	AU-03-1510	ROTATION MOTOR	1
12	HW-.375USSFW	3/8" FLAT WASHER	5
13	HW-.375LW	3/8" LOCK WASHER	2
14	HW-.375-16NUT	3/8-16 NUT	2
15	H500-6801-6-10	-6 MJIC X -10 MORB 90DEG	2
16	H250-16-6J6J	1/4" X 16" HOSE -6 FJIC X -6 FJIC	2
17	H500-6402-8-10	-8 MORB X -10 FJIC ADAPTER	1
18	H500-12-10J10J	1/2" X 12" HOSE -10 FJIC X -10 FJIC	1
19	AU-03-9032	12 CU/IN MOTOR	1
20	H500-9-10J10J	1/2" X 9" HOSE -10 FJIC X -10 FJIC	1
21	H500-20-10J10J	1/2" X 20" HOSE -10 FJIC X -10 FJIC	1
22	AU-02-3200-900-ASM	MANIFOLD ASSEMBLY - 48" BLOWER	1
23	H500-15-10J10J	1/2" X 14.5" HOSE -10 FJIC X -10 FJIC	1
24	H500-6804-10-10-10	-10 MORB X 2-10 MJIC TEE	1
25	HW-.375-16X1.0G5	3/8"-16X1" HEX BOLT G5	3
26	H750-6400-10-10	ADAPTER -10 MORB X -10MJIC	3
27	AU-03-9030	3.0 CU/IN FAN MOTOR	1
*27	AU-03-9031	4.0 CU/IN FAN MOTOR	--
28	HW-.500-20X1.5FCS	1/2"-20 X 1 1/2" FERRY CAP SCREW	2
29	HW-.375-16NYL	3/8 - 16 NYLOCK NUT	2
30	AU-01-1600	CHUTE TIP CYLINDER	1
31	HW-.375-16X2.0G5	3/8"-16 X 2" GRADE 5 BOLT	2
32	H250-2404-6-4	-6 MJIC X -4 MNPT	2
33	H250-52-6J6J	1/4" X 52" HOSE -6 FJIC X -6 FJIC	1
34	H250-58-6J6J	1/4" X 58" HOSE -6 FJIC X -6 FJIC	1
*DENOTES ALTERNATE OPTION			

AU-02-3200-900-ASM MANIFOLD ASSEMBLY - 48" BLOWER



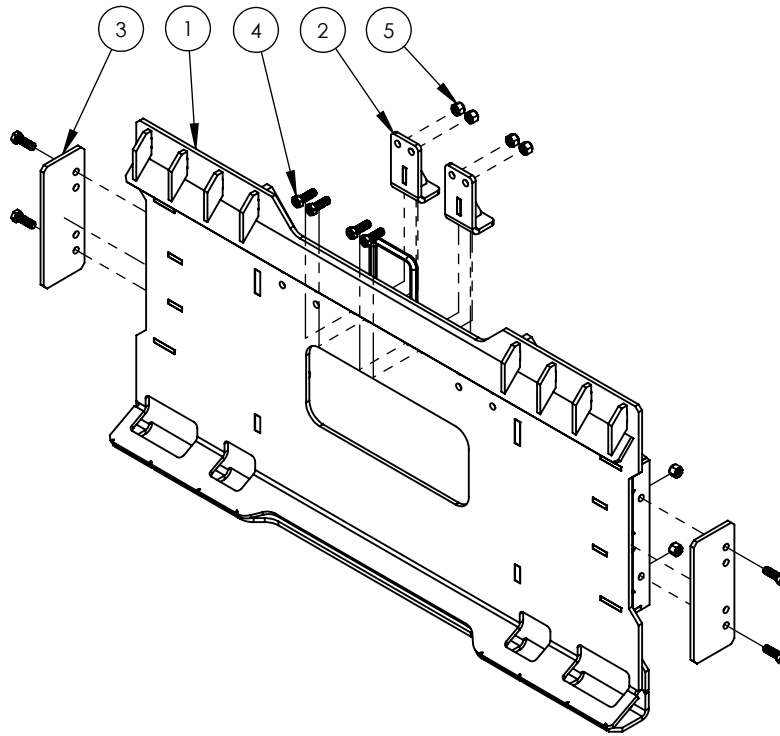
ITEM NO.	PART NUMBER	DESCRIPTION	QTY.
1	AU-02-3200	MANIFOLD BLOCK	1
2	H375-FT21-6-6	-6 MJIC X -6 MORB	4
3	H500-6802-10-12	-10 MJIC X -12 MORB 45 DEG	2
4	H750-6801-10-12	-10 MJIC X -12 MORB 90 DEG	2
5	H750-6400-10-12	-10 MJIC X -12 MORB	1
6	H750-6410-16-10	-16 MORB X -10 FORB ADAPTER	1
7	H750-6803-10-10-10	-10 MORB X 2-10 MJIC TEE	1
8	H500-FT17-8	-8 MORB HH PLUG	1

787-02-0010-ASM
MQT-BOBCAT STYLE QT ASM



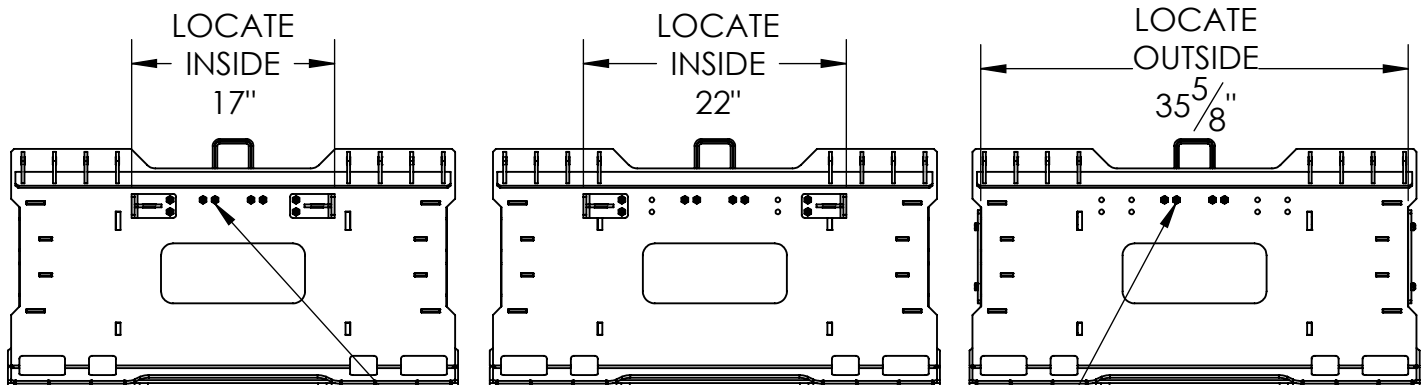
787-02-0010-ASM

PARTS BREAKDOWN



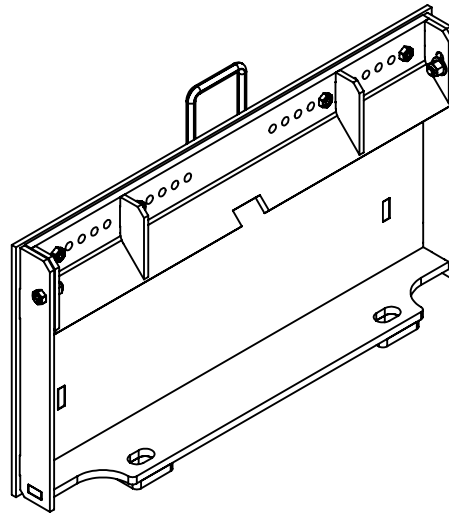
ITEM NO.	PART NUMBER	DESCRIPTION	QTY.
1	787-02-0004	MQT - BOLT ON	1
2	787-02-0007	MQT - LOCATING BRACKET	2
3	787-03-0035	MQT - BOLT ON SIDE	2
4	HW-.375-16X1.125G8	3/8"-16X1-1/8" GRADE 8	8
5	HW-.375-16NYLG8	3/8"-16 NYLOCK GRADE 8	8
6	HW-.750-10X2.0G8	3/4"-10 X 2" HH G8	8
7	HW-.750-10NYLG8	3/4"-10 NYLOCK NUT G8	8

REMOVE SIDE PLATES AND LOCATE INSIDE
WHEN MOUNTING ON FULL SIZE QT

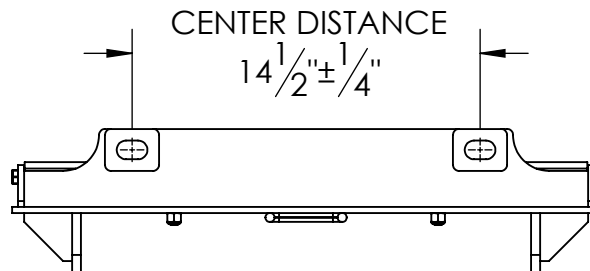
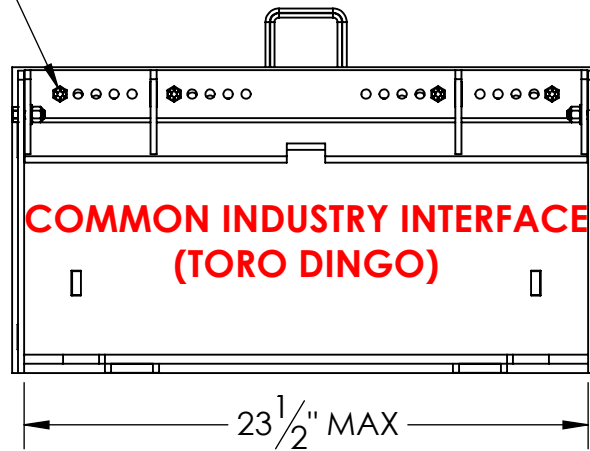
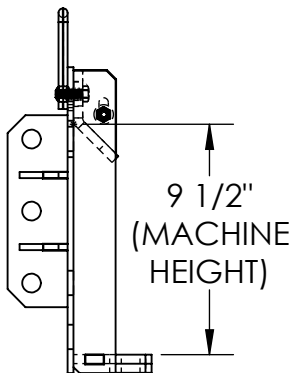


USE CENTER HOLES TO
STORE UNUSED HARDWARE

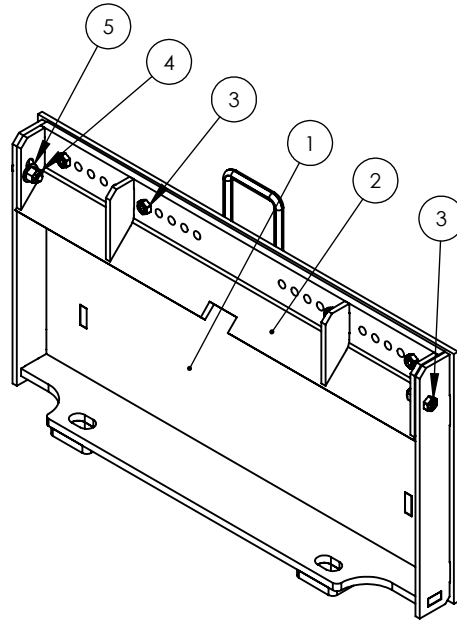
787-02-0009-ASM
CII-COMMON IND INTERFACE ASM



ADJUSTABLE IN 1/8" INCREMENTS
SHIPS STANDARD AT 9-1/2"
MAX = 9-1/2" (OUTSIDE HOLES)
MIN = 9" (INSIDE HOLES)



787-02-0009-ASM
PARTS BREAKDOWN



ITEM NO.	PART NUMBER	DESCRIPTION	QTY.
1	787-02-0003	CII QT - BOLT ON	1
2	787-02-0008	CII QT - BOLT ON TOP BAR	1
3	HW-.375-16X1.125G8	3/8"-16X1-1/8" GRADE 8	6
4	HW-.375-16NYLG8	3/8"-16 NYLOCK GRADE 8	6
5	HW-.375 SAE FW G8	3/8" SAE WASHER G8	2
6	HW-.750-10X2.0G8	3/4"-10 X 2" HH G8	6
7	HW-.750-10NYLG8	3/4"-10 NYLOCK NUT G8	6