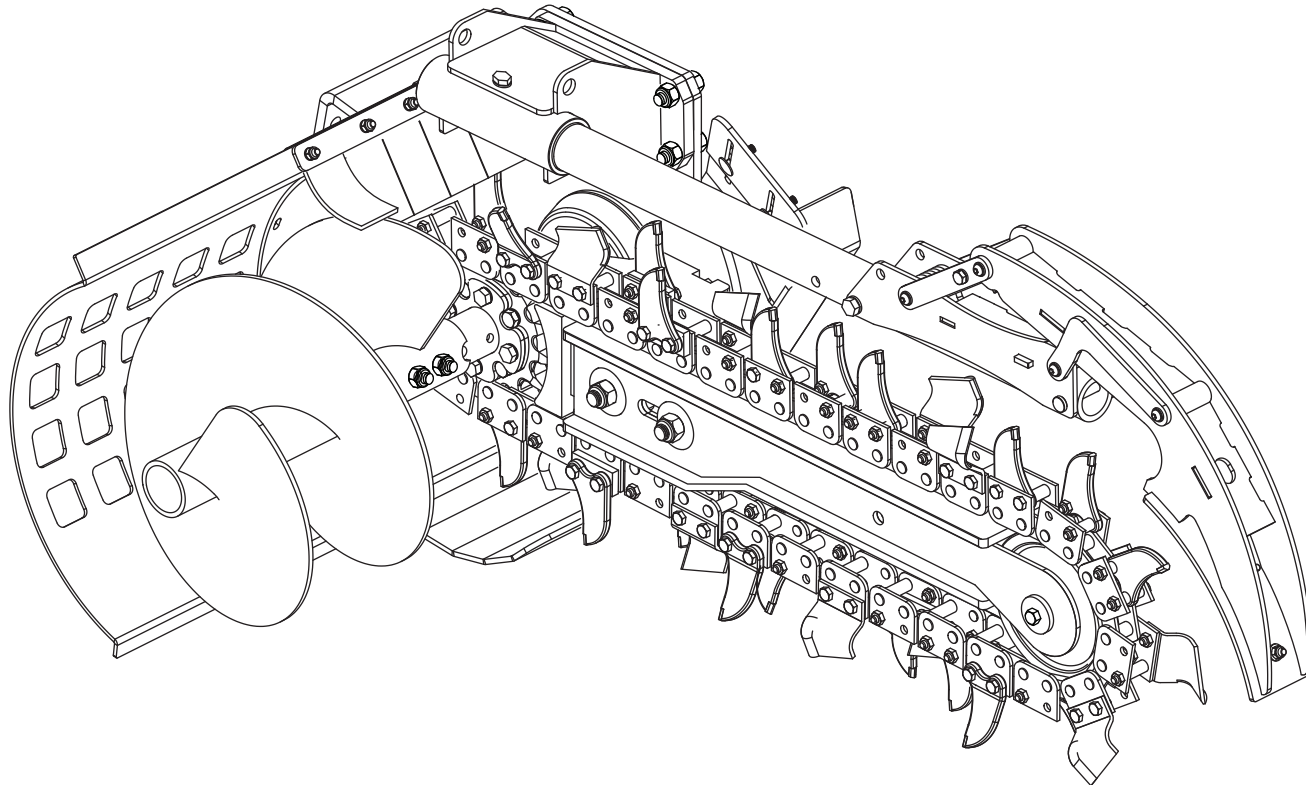


MT600 - MT900 Trencher - Parts List

MT900 from Serial Number 450920001



MT600 - MT900 Trencher - Parts List

MT900 from Serial Number 45092000+

FOREWORD

This document is the property of Skid Pro and the information contained herein is confidential to the company. The contents of the document must not be reproduced or disclosed wholly or in part, or used for purposes other than that for which it has been supplied, without the prior written permission of Skid Pro.

Doc No: 99-95400901-REV-02 Date: 12-2024

WARRANTY

Skid Pro is not responsible for nor will accept any charges for work carried out by any unauthorised repairers. Charges, including those for spare parts, will not be accepted unless they have been authorised in writing by Skid Pro.

Any goods returned to Skid Pro by the customer, under warranty or for repair, must be freight paid unless authorised in writing by Skid Pro.

MT600 - MT900 Trencher - Parts List

MT600 from Serial Number 410620001

MT900 from Serial Number 450920001

SYMBOLS AND ABBREVIATIONS

The symbols that follow are used within this publication



Safety Glasses to be worn



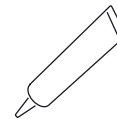
Gloves/hand protection to be used



Safety shoes to be worn



Torque Tightening required



Thread treatment required



Refer to Interchangeability Chart

MT600 - MT900 Trencher - Parts List

MT900 from Serial Number 450920001

ILLUSTRATED PARTS LIST.

- A The Illustrated Parts List helps the supply procedure and the identification of replacement component parts.
- B The Detailed Parts List is divided into seven columns:
- The first column gives the item number of each detailed part contained in the illustration. An item number prefixed by a (-), shows that the item is not illustrated.
 - The second column gives the part number by which the item is identified.
 - The third column, gives the description of the component. The description will be preceded by one or more dots (●).
 - The fourth column gives the quantity of each item in the complete assembly.
 - The fifth column shows the torque tightening required for the item.
 - The sixth column shows the thread treatment required for the item.
 - The seventh column makes reference to any additional information required for the part or assembly.
- C Only those items with full dots (●) can be ordered as spares. Items with empty dots (eg ●○) are shown only for clarity of assembly and cannot be ordered as spares.

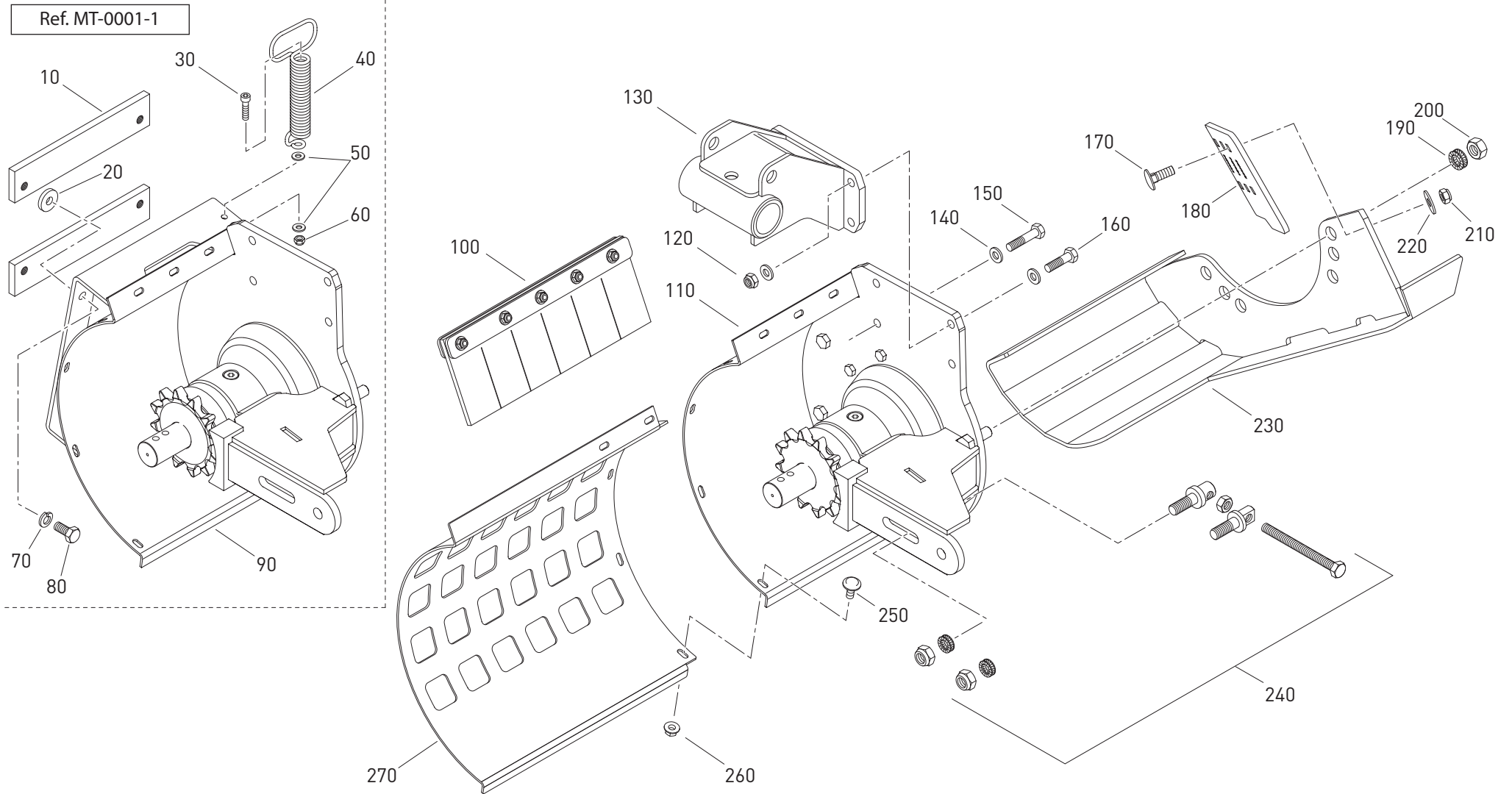
- D When ordering spare parts please quote the serial number of the trencher, which can be identified from the serial number plate on the top of the unit.

The abbreviations that follow are used within this publication

AR	As Required
BSP	British Standard Pipe Thread
cc	Cubic Centimeters
Kg	Kilogrammes
L	Litres
LPM	Litres Per Minute
Mm	Millimeters
Nm	Newton Meters
UNC	Unified Coarse Thread
GPM	Gallons Per Minute
G	Gallons
lbs	Pounds
ft-lbs	Foot Pounds

MT600 - MT900 Trencher - Parts List

MT900 from Serial Number 450920001



MT600 - MT900 Trencher - Parts List

MT900 from Serial Number 450920004

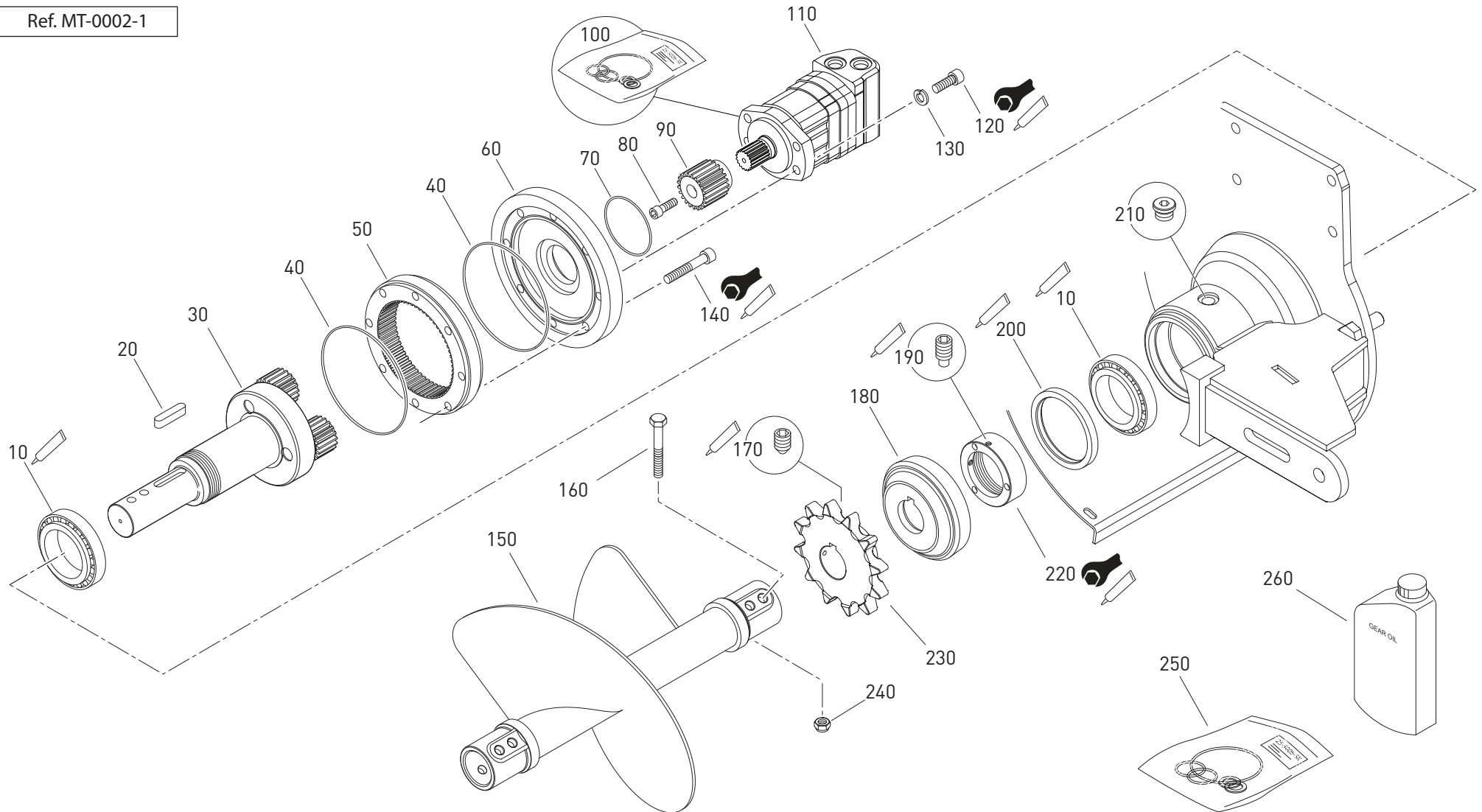
ITEM	PART NO.	DESCRIPTION	QTY	TORQUE LOAD	THREAD TREATMENT	NOTES
10	45-1039	• PLATE - CLAMP SIDESHIFT (SKIDSTEER)	2			
20	19-0053-43	• SPACER - SIDESHIFT (SKIDSTEER)	4			
30	99-9134-035-Y	• FIXING - SKT HD CAP M10 x 35 (12.9 Grade) (SKIDSTEER)	1			
40	99-7922	• SPRING HOSE RETAINER (SKIDSTEER)	1			
50	99-9154-P	• FIXING - M10 PLAIN "PENNY" WASHER (SKIDSTEER)	2			
60	99-9184	• FIXING - M10 METRIC NYLOC NUT (SKIDSTEER)	1			
70	99-9166	• FIXING - SPRING WASHER - M16 H/D (SKIDSTEER)	4			
80	99-9125-035	• FIXING - M12 x 35MM - SETSCREW (8.8 Grade) (SKIDSTEER)	4			
90	45-1948	• DRIVE SUB ASSEMBLY - (SKIDSTEER)	1			
100	45-1907	• KIT-RUBBER FLAP/PLATE AND FIXINGS	1			
110	45-1943	• DRIVE SUB ASSEMBLY - (EXCAVATOR/MINI LOADER)	1			
120	99-9186	• FIXING - NUT NYLOC M16 (8.8)	4			
130	45-1952	• MT600/900 DANGER BAR MTG. FAB	1			
140	99-9156	• FIXING - WASHER - M16	8			
150	99-9126-075	• FIXING - M16 x 75MM - BOLT (8.8 Grade)	1			
160	99-9126-060	• FIXING - M16 x 60MM - SETSCREW (8.8 Grade)	3			
170	99-9205-035	• FIXING - M12X35 CUP SQ SETSCREW (DIN603)	2			
180	45-1045	• SKID PLATE MT ADJUSTABLE CHAIN WIDTH 100-200	1			
190	99-9237	• FIXING - WASHER ANTIVIBRATION NORD M20 -SP	2			
200	99-9177	• FIXING - NUT PLAIN M20	2			
210	99-9185	• FIXING - M12 METRIC NYLOC NUT	2			
220	99-9155-P	• FIXING - PENNY WASHER - M12 - FORM G	2			
230	45-1901	• SKID PLATE WELD ASSY MT600/900	1			
240	42-1902	• BOOM ADJUSTMENT KIT	1			
250	99-9204-025	• FIXING - COACH BOLT M10 X 25 LONG (8.8 Grade)	4			
260	99-9194	• FIXING - NUT FLANGED - M10	4			
270	45-1035	• GUARD - BOLT-ON TRENCHER	1			

Ref. MT-0001-1

MT600 - MT900 Trencher - Parts List

MT900 from Serial Number 450920001

Ref. MT-0002-1



MT600 - MT900 Trencher - Parts List

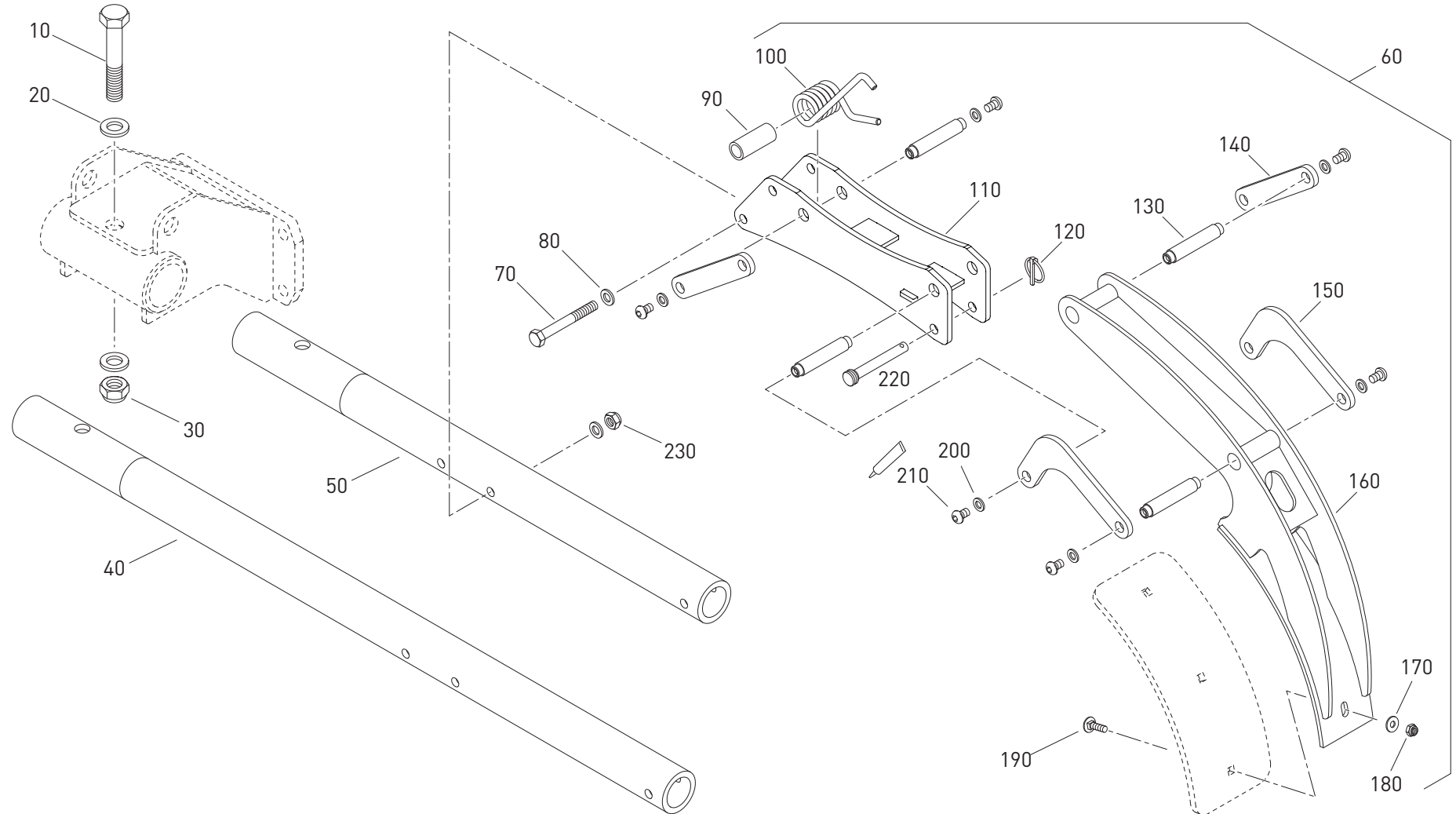
MT900 from Serial Number 450920004

ITEM	PART NO.	DESCRIPTION	QTY	TORQUE LOAD	THREAD TREATMENT	NOTES
10	99-1104	● TAPER BEARING 75mm (32015X)	2		LOCTITE 7471, 641	
20	42-1027	● KEY-DRIVE SHAFT - ALL TRENCHERS	1			
30	21-3913	● TRENCHER SHAFT ASSEMBLY - 3.86:1	1			
40	99-1532-V	●○ O'RING - 162 x 3.0 (SERIES 3 RING)	2			See Seal Kit
50	21-3004	● RING GEAR - 60T - 2.5 MOD.	1			
60	21-3057	● BTM INPUT - TRENCHER DIR. SUN GEAR	1			
70	99-1540-V	●○ O'RING - 86 ID x 2.5 DIAMETER (Motor seal)	1			See Seal Kit
80	99-9633-100	● FIXING - 3/8" UNC X 1" LONG SOCKET CAP SCREW - BLACK	1			
90	21-3049	● SUN GEAR - 21T - MOTOR MTG.	1			
100	25-2312	● SEAL KIT - MOTOR	1			
110	25-2303	● MOTOR - ATE 80cc - 14T SHAFT	1			
120	99-9135-035	● FIXING - M12 x 35 SOCKET CAP SCREW (12.9 Grade)	4	121 - 135 Nm	LOCTITE 243	
130	99-9165	● FIXING - M12 SPRING WASHER	4			
140	99-9135-075	● FIXING - M12 x 75 SOCKET CAP SCREW (12.9 Grade)	8	121 - 135 Nm	LOCTITE 243	
150	42-1921	● AUGER - DUAL HUB	1			
160	99-9115-090	● FIXING - BOLT - M12 x 90 - BOLT (10.9 Grade)	2			
170	99-9223-010	● SETSCREW -CONE PT- M8 x 10	2		LOCTITE 243	
180	42-1103	● SEAL PROTECTOR (70 Bearing output housing)	1			
190	99-9213-012	● GRUB SCREW - M8X12 SQUARE POINT (14.9 Grade)	2		LOCTITE 243	
200	99-1504	●○ OIL LIP SEAL - (100 x120 x12)	1		LOCTITE 7471, 515	See Seal Kit
210	21-5071	● 1/2" BSP MAGNETIC PRESSURE PLUG	2			
220	21-3019	● LOCKING NUT M75	1	350 Nm	LOCTITE 209125	
230	42-1096	● SPROCKET - C/W Collar (MINI-T)	1			
240	99-9185	● FIXING - NUT NYLOC M12 (8.8 Grade)	2			
250	SK-21-390	● SEAL KIT - GEARBOX - SERIES 3 - Comprising of items 40,70 &190	1			
260	99-8101	● GEAR OIL - EP320 - MINERAL (1 Litre Bottle) All units are supplied with 320 viscosity oil, except where the unit is to be or stored in extreme temperatures.	2			1100 ml required
	99-8104	● GEAR OIL - EP150 - MINERAL When using or storing the units below -15°C				
	99-8106	● GEAR OIL - EP460 - MINERAL When using or storing the units above 35°C				
	21-3999-2K	● KIT - DRIVE SUB ASSY - Comprising of items 10 to 80, 110 to 130 & 160 to 220	1			Ref. MT-0002-1

MT600 - MT900 Trencher - Parts List

MT900 from Serial Number 450920001

Ref. MT-0003-1



MT600 - MT900 Trencher - Parts List

MT900 from Serial Number 450920004

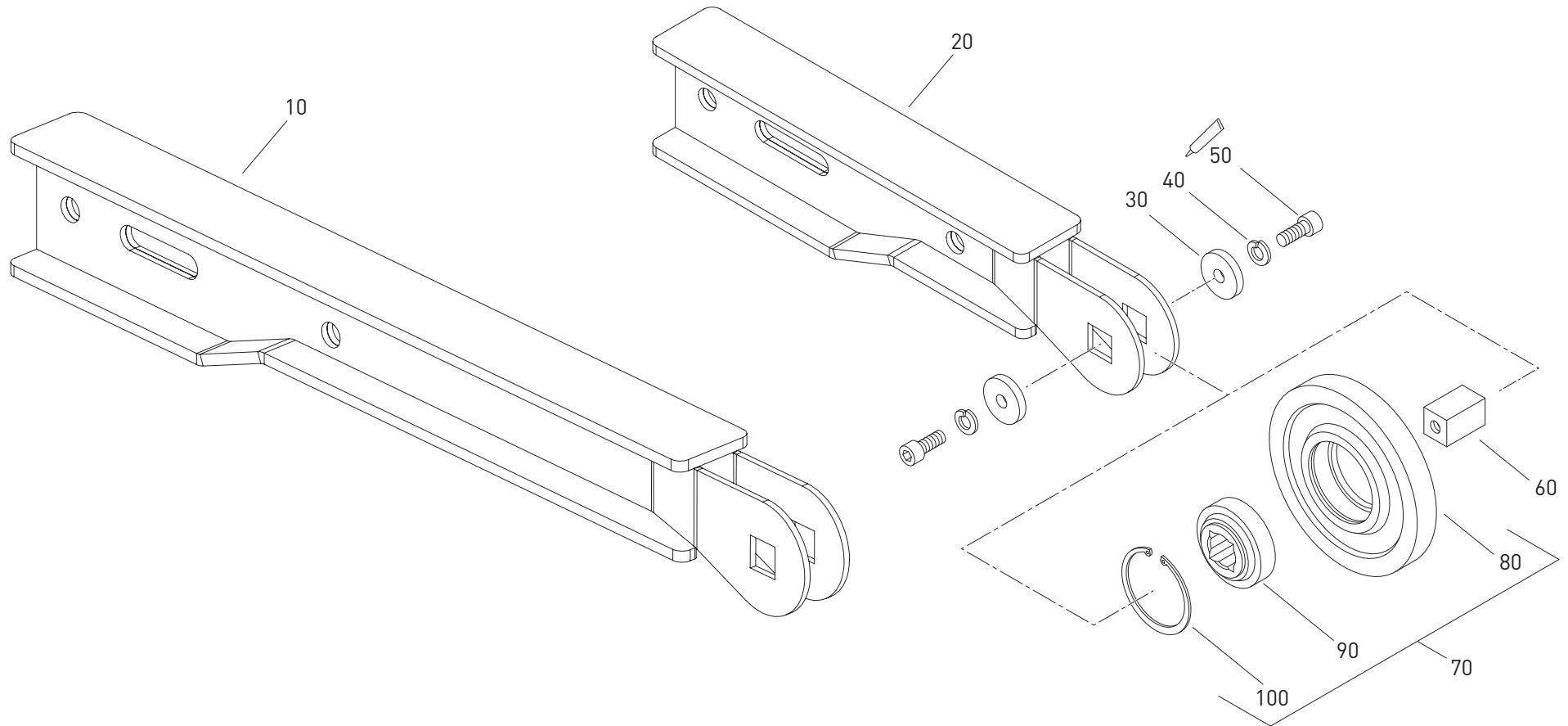
ITEM	PART NO.	DESCRIPTION	QTY	TORQUE LOAD	THREAD TREATMENT	NOTES
10	99-9117-120	• FIXING - BOLT M20 X 2.5 X 120 LONG (8.8 Grade)	1			
20	99-9157	• FIXING - M20 PLAIN WASHER	2			
30	99-9187	• FIXING - M20 METRIC NYCLOC NUT (8.8 Grade)	1			
40	45-1025	• DANGER BAR TUBE - (MT900)	1			
50	45-1024	• DANGER BAR TUBE - (MT600)	1			
60	45-1909	• TRENCH CLEANER ASSEMBLY	1			
70	99-9115-100	• FIXING - BOLT - M12 x 100	1			
80	99-9155	• FIXING - WASHER - M12	2			
90	42-1056	• TUBE - SPRING BUSH	1			
100	43-1102	• SPRING - TRENCHER CLEANER	1			
110	45-1902	• TRENCH CLEANER- PIVOT FAB	1			
120	99-99021	• LINCH PIN - 3545 - 4.5 x 28 x 35	1			
130	42-1045	• PIN - LINK PIVOT TAPPED	4			
140	42-1046	• LINK PLATE - SHORT	2			
150	42-1047	• PLATE - LONG LINK	2			
160	42-1913	• MAIN ARM FAB. (TRENCHER CLEANER)	1			
170	99-9154-P	• FIXING - M10 PLAIN "PENNY" WASHER	3			
180	99-9184	• FIXING - M10 METRIC NYLOC NUT	3			
190	99-9204-035	• FIXING - COACH BOLT M10 X 35 LG	3			
200	99-9154	• FIXING - M10 PLAN WASHER	8			
210	99-9254-16	• FIXING - M10 x 16 SKT HD BUTTON SETSCREW	8		LOCTITE 243	
220	42-1055	• PIN - AUGER RETAINER	1			
230	99-9185	• FIXING - M12 METRIC NYLOC NUT (8.8 Grade)	1			

Ref. MT-0003-1

MT600 - MT900 Trencher - Parts List

MT900 from Serial Number 450920001

Ref. MT-0004-1



MT600 - MT900 Trencher - Parts List

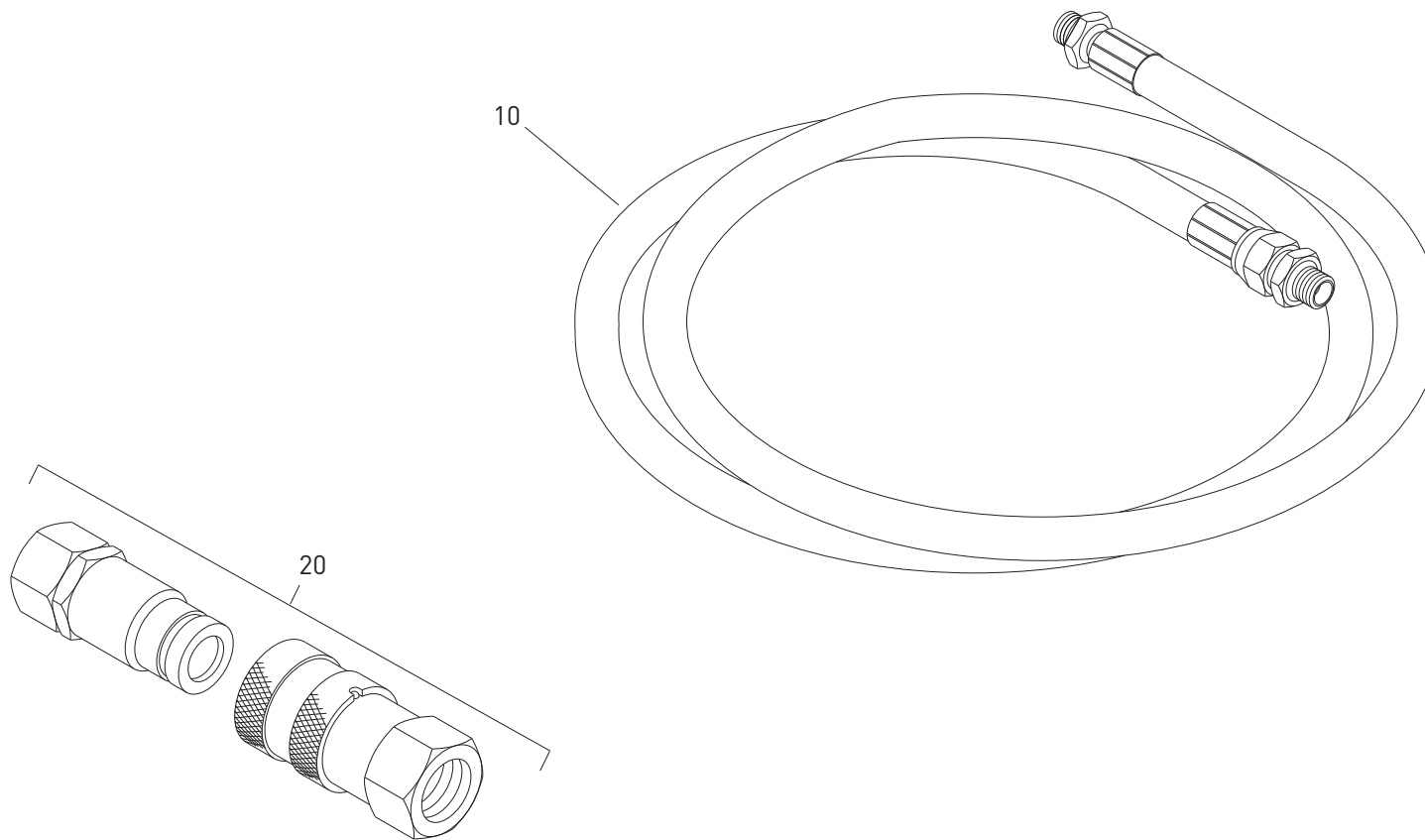
MT900 from Serial Number 45092000+

ITEM	PART NO.	DESCRIPTION	QTY	TORQUE LOAD	THREAD TREATMENT	NOTES
10	42-1929	• BOOM WELD ASSY (MT900)	1			
20	42-1930	• BOOM WELD ASSY (MT600)	1			
30	42-1024	• WASHER - TRENCHER BOOM NOSE	2			
40	99-9165	• FIXING - SPRING WASHER - M12 H/D	2			
50	99-9135-030	• FIXING - SKT HD CAP M12 x 30	2		LOCTITE 243	
60	42-1025	• PIN SQUARE - NOSE ROLLER (INC MAT'L)	1			
70	42-1900	• NOSE ROLLER ASSY	1			
80	42-1026	• ROLLER - BOOM NOSE	1			
90	99-1207	• BEARING - TRENCHER NOSE ROLLER (W208PP5)	1			
100	99-1603	• CIRCLIP - INTERNAL - NOSE ROLLER- 80mm INT.	1			
						Ref. MT-0004-1

MT600 - MT900 Trencher - Parts List

MT900 from Serial Number 45092000+

Ref. MT-0005-1



MT600 - MT900 Trencher - Parts List

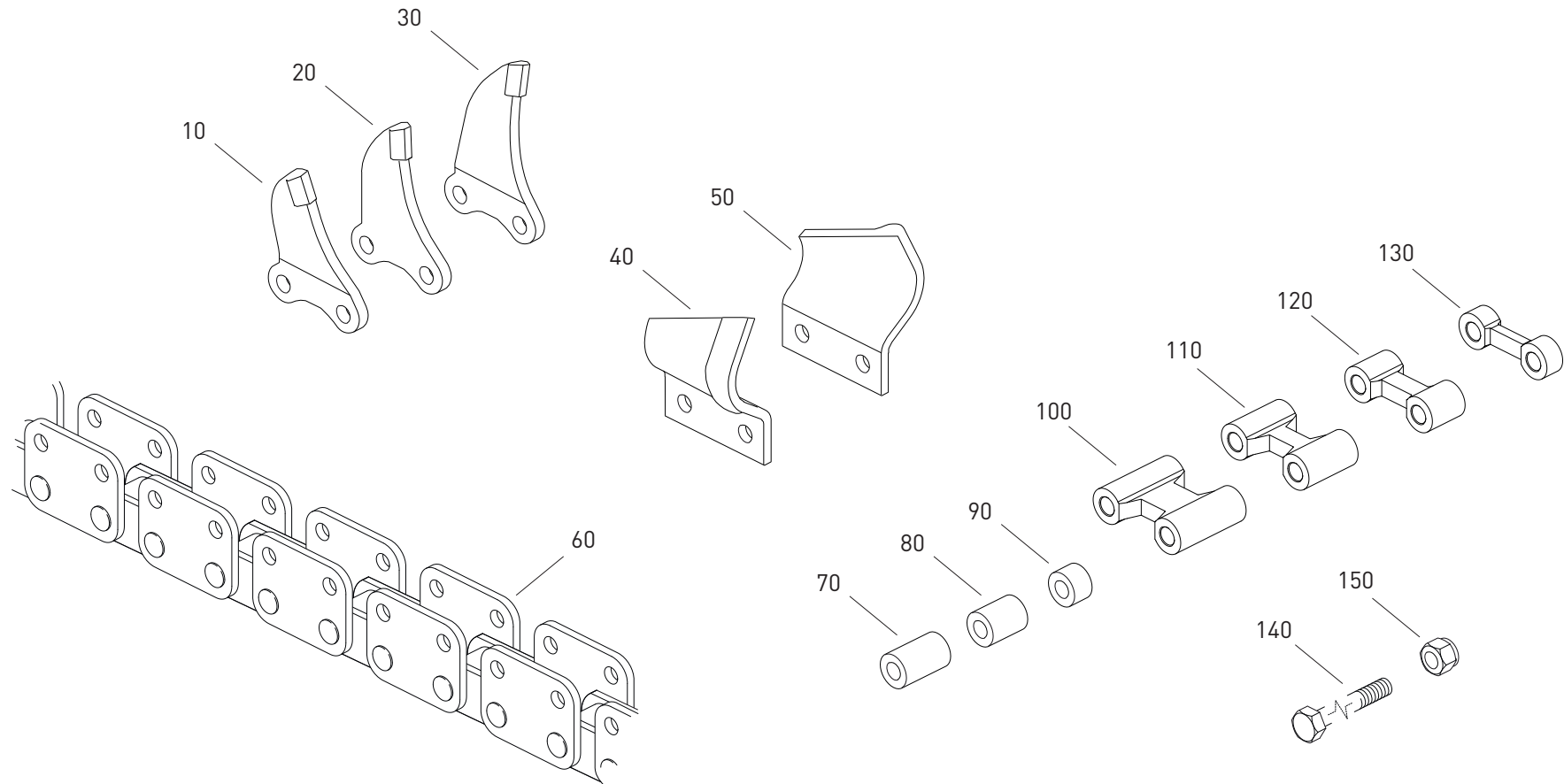
MT900 from Serial Number 450920001

ITEM	PART NO.	DESCRIPTION	QTY	TORQUE LOAD	THREADLOCKER	NOTES
10	99-7504	<ul style="list-style-type: none"> • HOSE - 1.8M 1/2" BSP Str/Str 	2			
20	99-7052-M/F	<ul style="list-style-type: none"> • QRC'S - 1/2" FF <p>Note: QRC's not available in all regions</p>	1			
						Ref. MT-0005-1

MT600 - MT900 Trencher - Parts List

MT900 from Serial Number 450920001

Ref. MT-0006-1



MT600 - MT900 Trencher - Parts List

MT900 from Serial Number 450920004

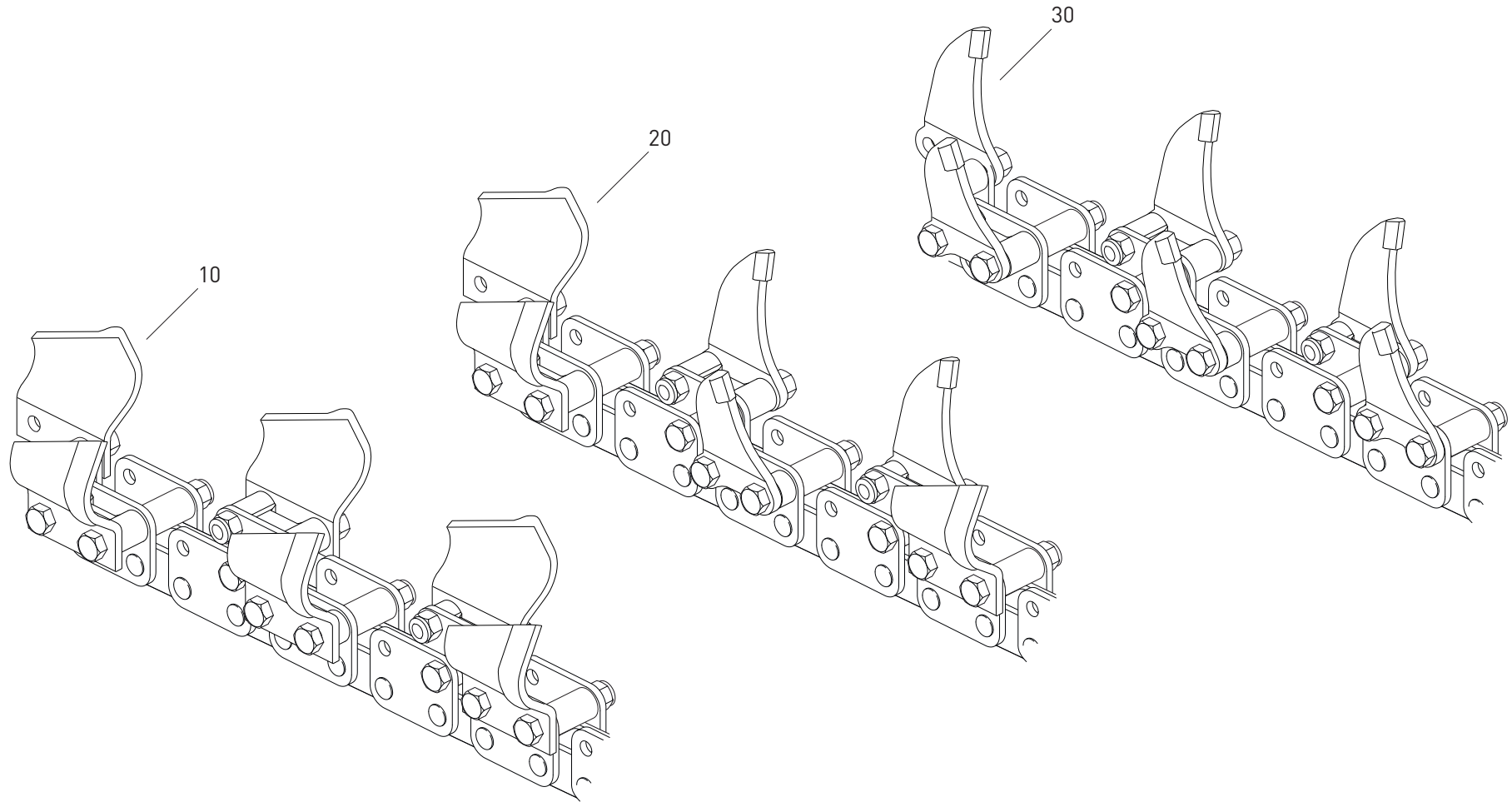
ITEM	PART NO.	DESCRIPTION	QTY	TORQUE LOAD	THREAD TREATMENT	NOTES
10	44-2003	• TOOTH - MINI-T RIGHT HAND TUNGSTEN	1			
20	44-2002	• TOOTH - MINI-T CENTRE TUNGSTEN	1			
30	44-2001	• TOOTH - MINI-T LEFT HAND TUNGSTEN	1			
40	44-2011	• TOOTH - MINI-T RIGHT HAND EARTH	1			
50	44-2010	• TOOTH - MINI-T LEFT HAND EARTH	1			
60	44-2026	• CHAIN - 48 LINKS (600 DEEP)	1			
	44-2025	• CHAIN - 64 LINKS (900 DEEP)	1			
70	44-2027	• CHAIN SPACER - 38.5 LONG	1			
80	44-2028	• CHAIN SPACER - 30.0 LONG	1			
90	44-2029	• CHAIN SPACER - 15.3 LONG	1			
100	44-2034	• SPACER BLOCK - 50mm WIDE	1			
110	44-2033	• SPACER BLOCK - 37.5mm WIDE	1			
120	44-2032	• SPACER BLOCK - 25mm WIDE	1			
130	44-2031	• SPACER BLOCK - 12mm WIDE	1			
140	99-9124-025	• FIXING - SETSCREW - M10 x 25mm	1			
	99-9124-030	• FIXING - SETSCREW - M10 x 30mm	1			
	99-9114-040	• FIXING - BOLT - M10 x 40mm	1			
	99-9114-050	• FIXING - BOLT - M10 x 50mm	1			
	99-9114-055	• FIXING - BOLT - M10 x 55mm	1			
	99-9114-060	• FIXING - BOLT - M10 x 60mm	1			
	99-9114-065	• FIXING - BOLT - M10 x 65mm	1			
	99-9114-070	• FIXING - BOLT - M10 x 70mm	1			
	99-9114-075	• FIXING - BOLT - M10 x 75mm	1			
	99-9114-080	• FIXING - BOLT - M10 x 80mm	1			
	99-9114-090	• FIXING - BOLT - M10 x 90mm	1			
	99-9114-100	• FIXING - BOLT - M10 x 100mm	1			
	99-9114-110	• FIXING - BOLT - M10 x 110mm	1			
	99-9114-120	• FIXING - BOLT - M10 x 120mm	1			
	99-9114-200	• FIXING - BOLT - M10 x 200mm	1			
	99-9114-210	• FIXING - BOLT - M10 x 210mm	1			
	99-9114-230	• FIXING - BOLT - M10 x 230mm	1			
	99-9114-250	• FIXING - BOLT - M10 x 250mm	1			
	99-9114-260	• FIXING - BOLT - M10 x 260mm	1			
	99-9114-280	• FIXING - BOLT - M10 x 280mm	1			
	99-9114-290	• FIXING - BOLT - M10 x 290mm	1			
150	99-9184	• FIXING - NUT NYLOC M10	1			

Ref. MT-0006-1

MT600 - MT900 Trencher - Parts List

MT900 from Serial Number 450920001

Ref. MT-0007-1



MT600 - MT900 Trencher - Parts List

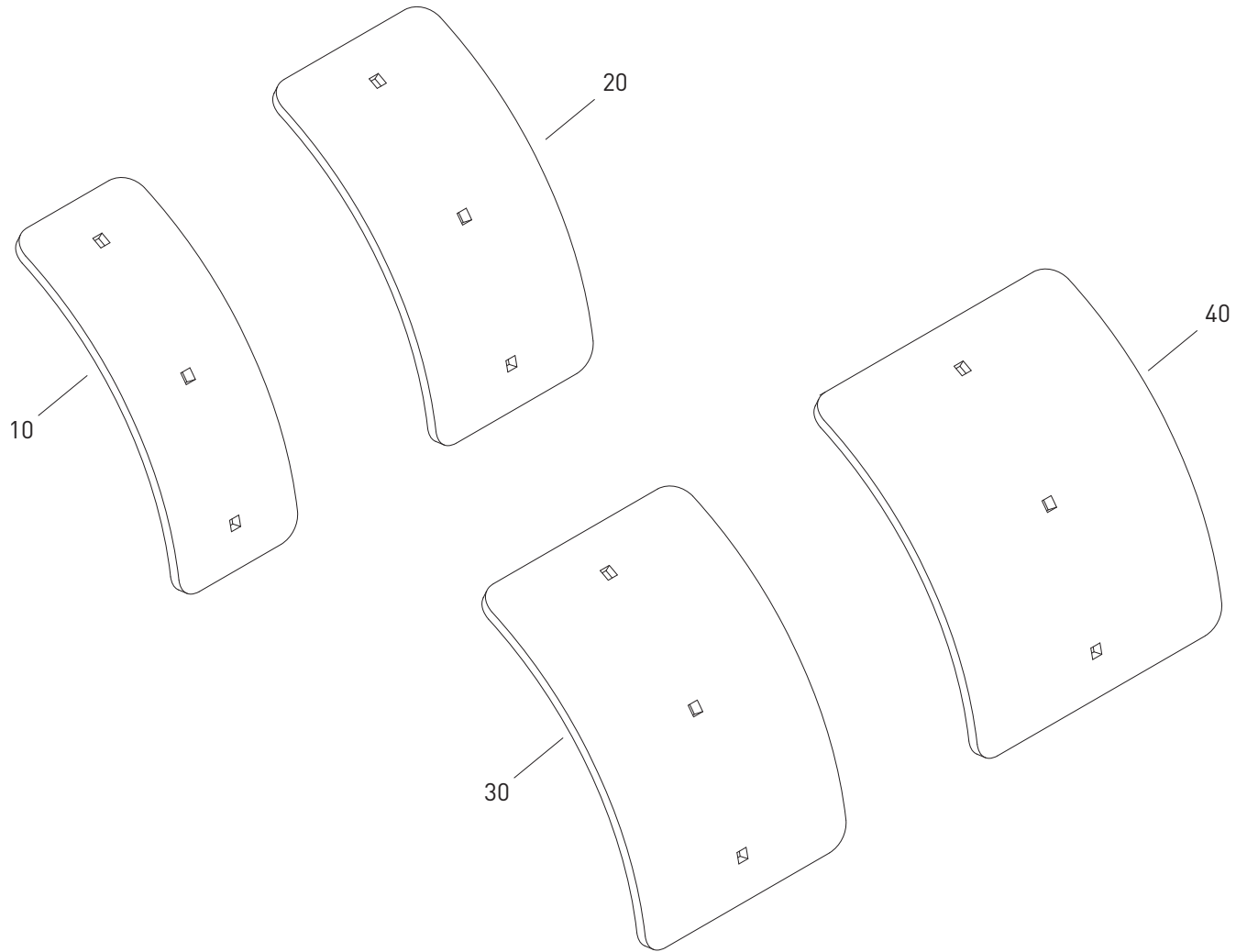
MT900 from Serial Number 450920004

ITEM	PART NO.	DESCRIPTION	QTY	TORQUE LOAD	THREAD TREATMENT	NOTES
10	44-2901	● CHAIN - 600 x 100 EARTH	1			
	44-2903	● CHAIN - 600 x 150 EARTH	1			
	44-2905	● CHAIN - 600 x 200 EARTH	1			
	44-2907	● CHAIN - 900 x 100 EARTH	1			
	44-2909	● CHAIN - 900 x 150 EARTH	1			
	44-2911	● CHAIN - 900 x 200 EARTH	1			
	44-2939	● CHAIN - 900 x 250 EARTH	1			
	44-2933	● CHAIN - 900 x 300 EARTH	1			
20	44-2902	● CHAIN - 600 x 100 COMBI	1			
	44-2904	● CHAIN - 600 x 150 COMBI	1			
	44-2906	● CHAIN - 600 x 200 COMBI	1			
	44-2908	● CHAIN - 900 x 100 COMBI	1			
	44-2910	● CHAIN - 900 x 150 COMBI	1			
	44-2912	● CHAIN - 900 x 200 COMBI	1			
	44-2915	● CHAIN - 900 x 250 COMBI	1			
	44-2934	● CHAIN - 900 x 300 COMBI	1			
30	44-2918	● CHAIN - 600 x 100 TUNGSTEN	1			
	44-2913	● CHAIN - 600 x 150 TUNGSTEN	1			
	44-2914	● CHAIN - 600 x 200 TUNGSTEN	1			
	44-2916	● CHAIN - 900 x 100 TUNGSTEN	1			
	44-2920	● CHAIN - 900 x 150 TUNGSTEN	1			
	44-2921	● CHAIN - 900 x 200 TUNGSTEN	1			
	44-2941	● CHAIN - 900 x 250 TUNGSTEN	1			
	44-2935	● CHAIN - 900 x 300 TUNGSTEN	1			
						Ref. MT-0007-1

MT600 - MT900 Trencher - Parts List

MT900 from Serial Number 450920001

Ref. MT-0008-1



MT600 - MT900 Trencher - Parts List

MT900 from Serial Number 450920001

ITEM	PART NO.	DESCRIPTION	QTY	TORQUE LOAD	THREAD TREATMENT	NOTES
10	42-1058	• SCRAPER - MT - 332 x 130 FOR 150MM CHAINS	1			
20	42-1030	• SCRAPER - MT - 332 x 180 FOR 200MM CHAINS	1			
30	42-1052	• SCRAPER - MT - 332 x 230 FOR 250MM CHAINS	1			
40	42-1057	• SCRAPER - MT - 332 x 280 FOR 300MM CHAINS	1			
						Ref. MT-0008-1



PO Box 982
Alexandria, MN 56308
Toll Free: 877-378-4642
www.skidpro.com

SKID PRO ATTACHMENT WARRANTY

Attachments covered under this 24 Month Warranty include:

Skid Pro warrants above attachments for twenty-four months from date of shipment, to the original owner. Warranty covers products to be free from defects in material and workmanship when properly set up and operated in accordance with Skid Pro's recommendations.

WARRANTY CLAIM PROCEDURE

All warranty claims must be submitted within the manufacturer's limited warranty period. Pictures and/or a video of the failing component(s) are required to properly document all potential warranty claims. To submit a warranty claim, contact your Skid Pro Product Guru or complete a [Warranty Claim Form](#) on our website and send it along with supporting pictures/video to sales@skidpro.com. Upon receipt, the warranty claim information will be reviewed and once determined to be a valid claim, a return authorization number will be issued for the return of the defective part(s) if applicable and replacement part(s) will be shipped. If it is determined the defective parts are to be returned and they are not received by Skid Pro within 30 days of receiving the replacement parts, the Buyer will be charged for the cost of the replacement parts plus any shipping charges. Tampering with the failed part (i.e. disassembling a motor or cylinder) will void the warranty.

EXCLUSIONS OF WARRANTY

Skid Pro's requirement for any issue with respect to attachments shall be limited to repairing or replacing the defective part, as this is a parts-only warranty and does not include any labor to replace or install the part or downtime from resulting issue. Skid Pro has full technical support & assistance to assure customer replaces the part properly for optimal performance on attachment.

This warranty shall not apply to any attachment's wear items, or attachments that have been repaired or altered outside the Skid Pro factory in any way, or that has been subject to misuse, negligence or accident beyond Skid Pro's recommended use and/or machine rated capacity.

This warranty is exclusive and in lieu of all other warranties and conditions. Skid Pro disclaims all other warranties and conditions, express or implied, including any implied warranties or conditions of merchantability or fitness for a particular purpose. In no event shall Skid Pro be liable for any special, incidental, indirect or consequential damage, whatsoever, including, but not limited to, loss or interruption of business, lost profits, or loss of machine use, whether based on contract, warranty, tort, negligence, strict liability, statute or otherwise, even if Skid Pro has been advised of the possibility of such damages.

No agent, employee, or representative of Skid Pro has any authority to bind said company to any affirmation, representation, or warranty concerning its machinery and/or attachments except as specifically set forth herein. Any disagreement or dispute of warranty policy or customer expectations of product, soundness, functionality, or performance would take place in Douglas County, Alexandria, MN, where Skid Pro operates.