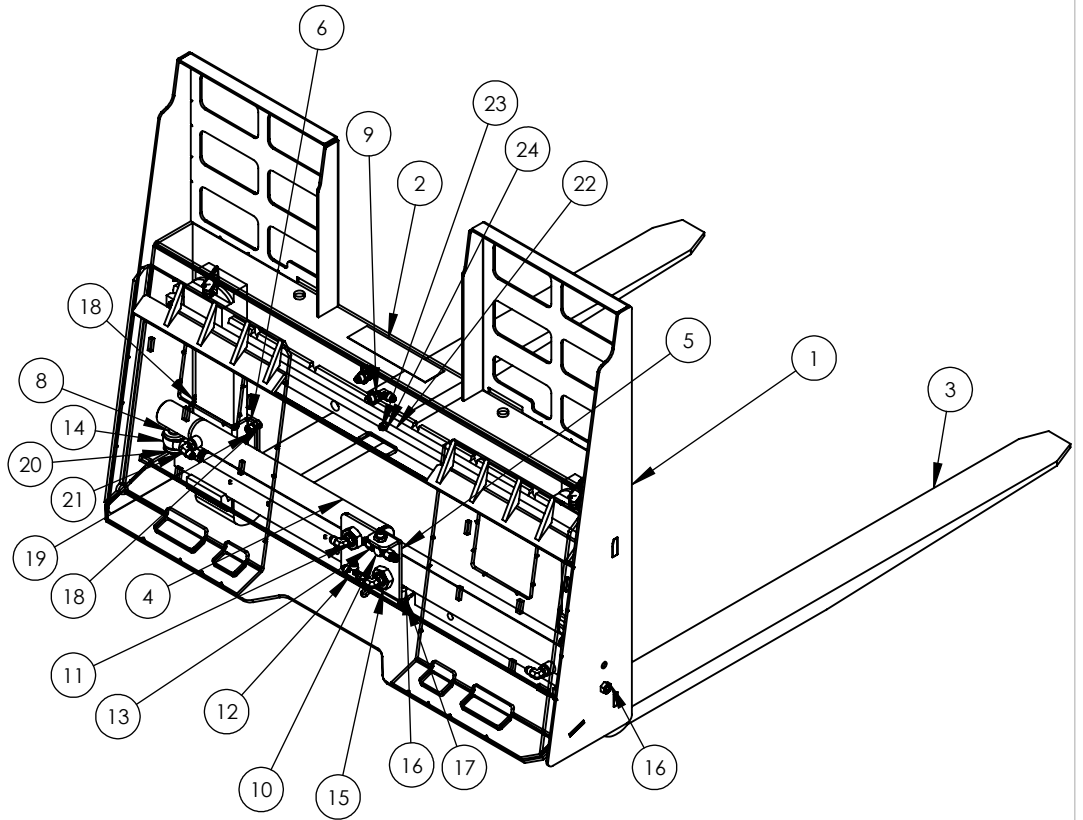


ITEM NO.	PART NUMBER	DESCRIPTION	QTY.
1	632-1-2050	FORK BACKER	1
2	AU-03-1147-ORANGE	STEP GRIP	1
3	AU-02-0001-48	FORK TINE	2
4	AU-02-130001	FORK POSITION CYLINDER ASM	2
5	AU-03-130011	CYLINDER MOUNT	1
6	AU-03-130009	FORK CLAMP PLATE	2
7	AU-02-130002	FORK CLAMP BASE	2
8	632-3-0087	ROUNDED HEAD CLEVIS PIN	2
9	H250-FT2043-6-6S	-6 MJIC 90° BULKHEAD ELBOW	2
10	H250-FT6JIC-T	-6 MJIC BULKHEAD T-FITTING	1
11	H250-FT2062-6-6S	6 MORB X 6MJIC 90DEG	4
12	H250-203102-6-6S	-6 JIC SWIVEL RUN T	1
13	H250-6JIC-RST60	6JIC RESTRICTOR .60	2
14	HW-NJF12	3/4 RH FEM BALL JOINT	2
15	HW-1-14UNS TN G5	1-14 UNS THIN NUT GRADE5	2
16	HW-.500-13X1.50HHGR8	1/2-13 X 1.5 GR8 BOLT	4
17	HW-.500-13NYL	1/2-13 NYLOCK NUT ZINC	2
18	HW-.375-16X1.0G5	3/8-16X1 HEX HEAD BOLT GRD 5 ZINC	8
19	HW-.375-16NYL	3/8-16 NYLOCK NUT ZINC	8
20	HW-.750 SAE FW G5	3/4 SAE FLAT WASHER GRADE 5	2
21	HW-.156X1.5 COTTER PIN	5/32" X 1.5 COTTER PIN	2
22	AU-03-130014	HYD ADJ WEAR BAR	1
23	HW-.312-18X1.75GR8	5/16-18 X 1.75 GR8 HH BOLT	3
24	HW-.312-18-NYL-GR8	5/16-18 NYLOCK NUT GR8	3
	AU-03-9991-8ORB90	1/2 90 DEG FEMALE FLAT FACE	1
	AU-03-9990-8ORB90	1/2" 90 DEG MALE FLAT FACE	1
	H375-FT21-6-8	-8 MORB TO -6 MJIC ADAPTER	2
	AU-03-0511	60" HYDRAULIC HOSE	2
	AU-03-0510	18.25" HYDRAULIC HOSE	1
	AU-03-0509	16" HYDRAULIC HOSE	1
	AU-03-0508	14.5" HYDRAULIC HOSE	1
	AU-03-0507	11.5" HYDRAULIC HOSE	2
	HSL-250	HOSE SLEEVE	5



REVISIONS			
REV.	DESCRIPTION	DATE	APPROVED
5			
4			
3			
2			
1			

PROPRIETARY AND CONFIDENTIAL

THE INFORMATION CONTAINED IN THIS DRAWING IS THE SOLE PROPERTY OF ACCESSORIES UNLIMITED, LLC. ANY REPRODUCTION IN PART OR AS A WHOLE WITHOUT THE WRITTEN PERMISSION OF ACCESSORIES UNLIMITED, LLC. IS PROHIBITED.

INTERPRET GEOMETRIC TOLERANCING PER:
MATERIAL
FINISH

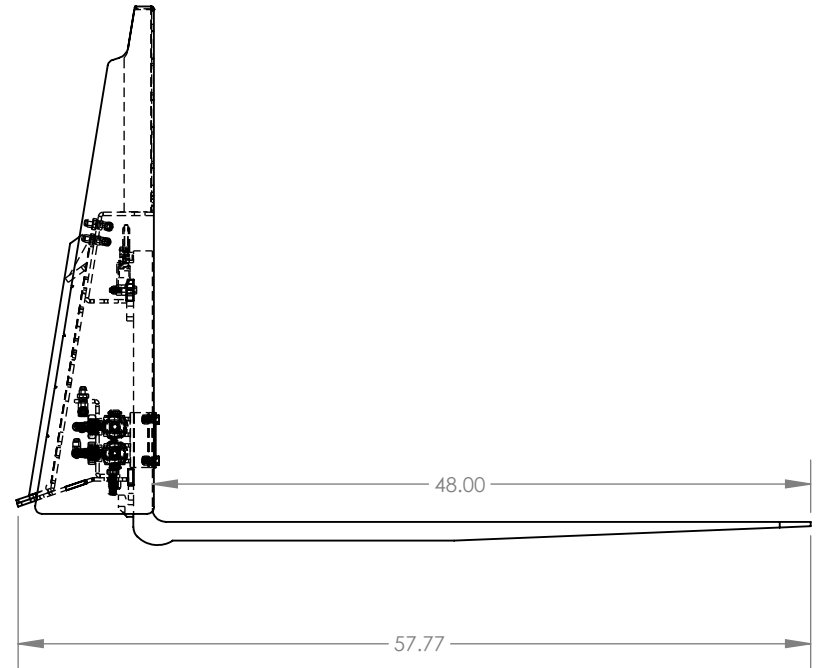
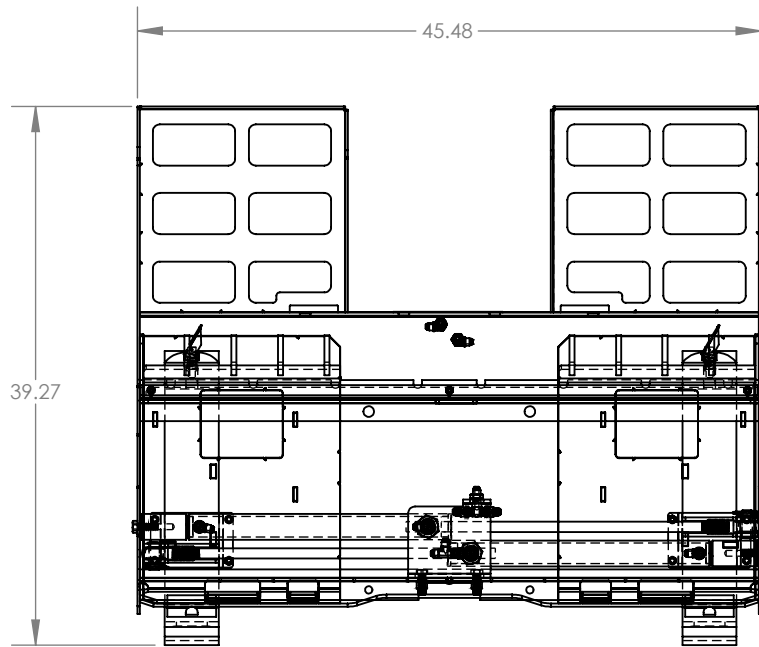
DO NOT SCALE DRAWING



NAME	DATE
DRAWN SA	1/16/2023
CHECKED	
THIRD ANGLE PROJECTION	
UNLESS OTHERWISE SPECIFIED:	
DIMENSIONS ARE IN INCHES	
TOLERANCES:	
FRACTIONAL ±1/8	
ANGULAR: MACH ± 2 BEND ± 2	
TWO PLACE DECIMAL ±.01	
THREE PLACE DECIMAL ±.005	

TITLE:
HYD ADJUST PALLET FORK 48

SIZE	DWG. NO.	REV
A	632-1-2050-48-H	0.0

SCALE: 1:14 WEIGHT: 413.93 SHEET 1 OF 2



<p>PROPRIETARY AND CONFIDENTIAL</p> <p>THE INFORMATION CONTAINED IN THIS DRAWING IS THE SOLE PROPERTY OF ACCESSORIES UNLIMITED, LLC. ANY REPRODUCTION IN PART OR AS A WHOLE WITHOUT THE WRITTEN PERMISSION OF ACCESSORIES UNLIMITED, LLC. IS PROHIBITED.</p> <p>INTERPRET GEOMETRIC TOLERANCING PER:</p> <p>MATERIAL</p> <p>FINISH</p> <p>DO NOT SCALE DRAWING</p>	NAME	DATE	
	DRAWN SA	4/9/2024	
	CHECKED		
	THIRD ANGLE PROJECTION		
	<p>UNLESS OTHERWISE SPECIFIED:</p> <p>DIMENSIONS ARE IN INCHES</p> <p>TOLERANCES:</p> <p>FRACTIONAL $\pm 1/8$</p> <p>ANGULAR: MACH ± 2 BEND ± 2</p> <p>TWO PLACE DECIMAL $\pm .01$</p> <p>THREE PLACE DECIMAL $\pm .005$</p>		<p>TITLE:</p> <p>HYD ADJUST PALLET FORK 48</p>
	SIZE	DWG. NO.	REV
	A	632-1-2050-48-H	0.0
	SCALE: 1:14	WEIGHT: 413.93	SHEET 2 OF 2

5

4

3

2

1