

SNOW BLOWER HOSE CHART WITH ROUTING

MACHINE			FAN			AUGER		ROTATION		CHUTE TIP	
FROM	MALE	FEMALE	A	B	C	A	B	FRONT	BACK	TOP	BOTTOM
TO BLOCK	A	I	B	A	CD	M1	M2	A1	B1	B2	A2
1550-72	AU-03-PH5108	AU-03-PH584	PH500-2900	PH500-2900	AU-03-2550	AU-03-PH512	AU-03-PH524	AU-03-PH2512	AU-03-PH2512	AU-03-2556	AU-03-2550
1550-72-HF	PH750-114.750	PH750-8700	PH750-2600	PH750-2900	AU-03-2550	PH750-25.25	PH750-25.50	AU-03-PH2512	AU-03-PH2512	AU-03-2556	AU-03-2550
1550-84	AU-03-PH5108	AU-03-PH584	PH500-3300	PH500-3300	AU-03-2556	AU-03-PH512	AU-03-PH524	PH250-2200	PH250-2200	AU-03-2562	AU-03-2556
1550-84-HF	PH750-114.750	PH750-8700	PH750-3400	PH750-3300	AU-03-2556	PH750-25.25	PH750-25.50	PH250-2200	PH250-2200	AU-03-2562	AU-03-2556
1551-66	AU-03-PH5108	AU-03-PH584	AU-03-PH524	AU-03-PH524	AU-03-2550	AU-03-PH512	AU-03-PH524	AU-03-PH2512	AU-03-PH2512	AU-03-2556	AU-03-2550
1551-66-HF	PH750-10300	PH750-8700	PH750-2150	PH750-2650	AU-03-2550	PH750-25.25	PH750-25.50	AU-03-PH2512	AU-03-PH2512	AU-03-2556	AU-03-2550
1551-72	AU-03-PH5108	AU-03-PH584	PH500-2900	PH500-2900	AU-03-2550	AU-03-PH512	AU-03-PH524	AU-03-PH2515	AU-03-PH2515	AU-03-2556	AU-03-2550
1551-84	AU-03-PH5108	AU-03-PH584	PH500-3300	PH500-3300	AU-03-2556	AU-03-PH512	AU-03-PH524	PH250-2200	PH250-2200	AU-03-2562	AU-03-2556
1552-84DA	PH750-8700	PH750-8700	PH750-3200	PH750-3200-90	PH250-4000	PH750-2600	PH750-2900	PH250-2515	PH250-2515	AU-03-PH2556	AU-03-PH2550

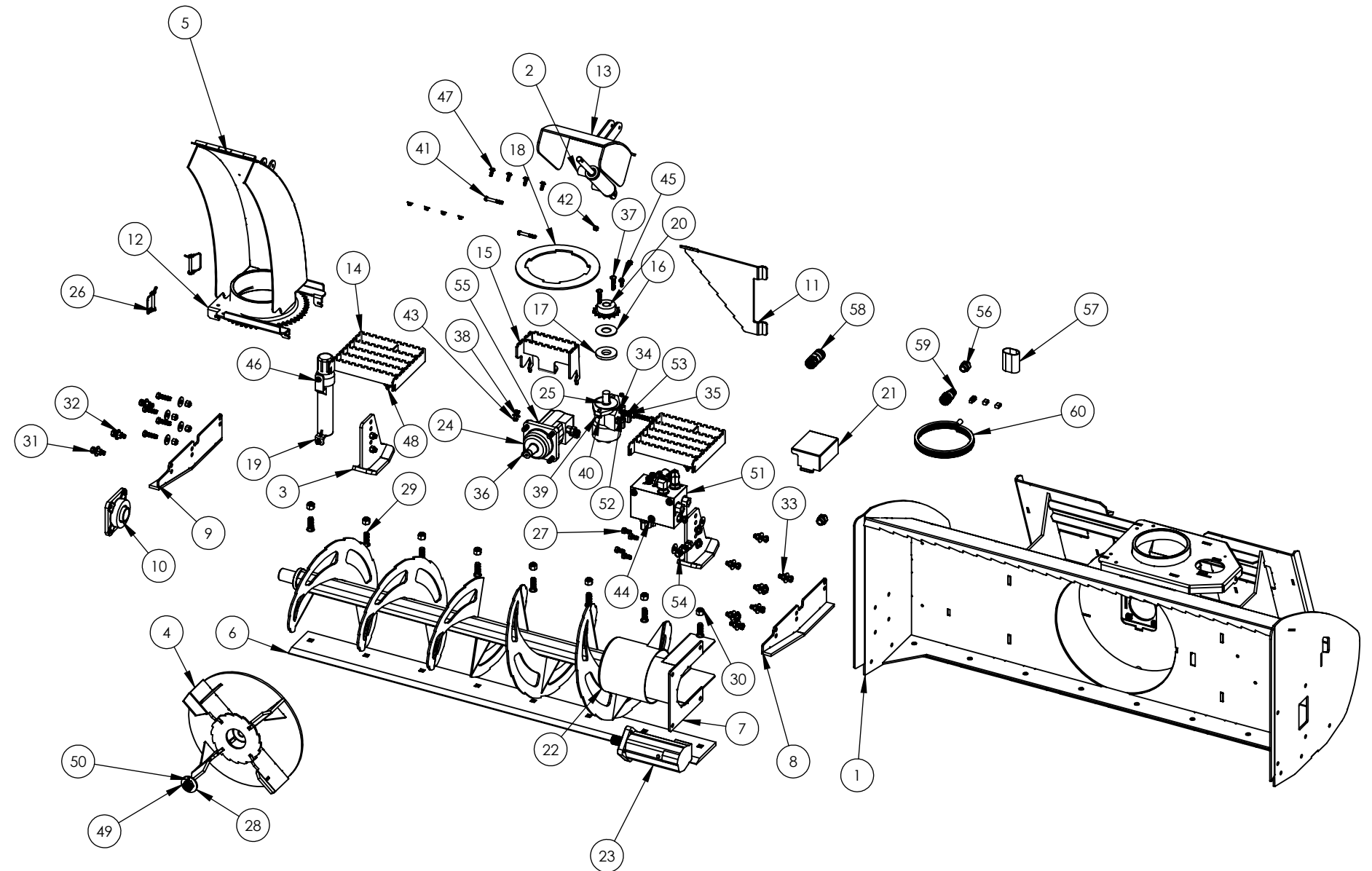
*ITEMS WITH XX ARE DEPENDANT TO WIDTH OF UNIT.

*84" BLOWER HAS 10 PLOW BOLTS AND 10 NUTS.

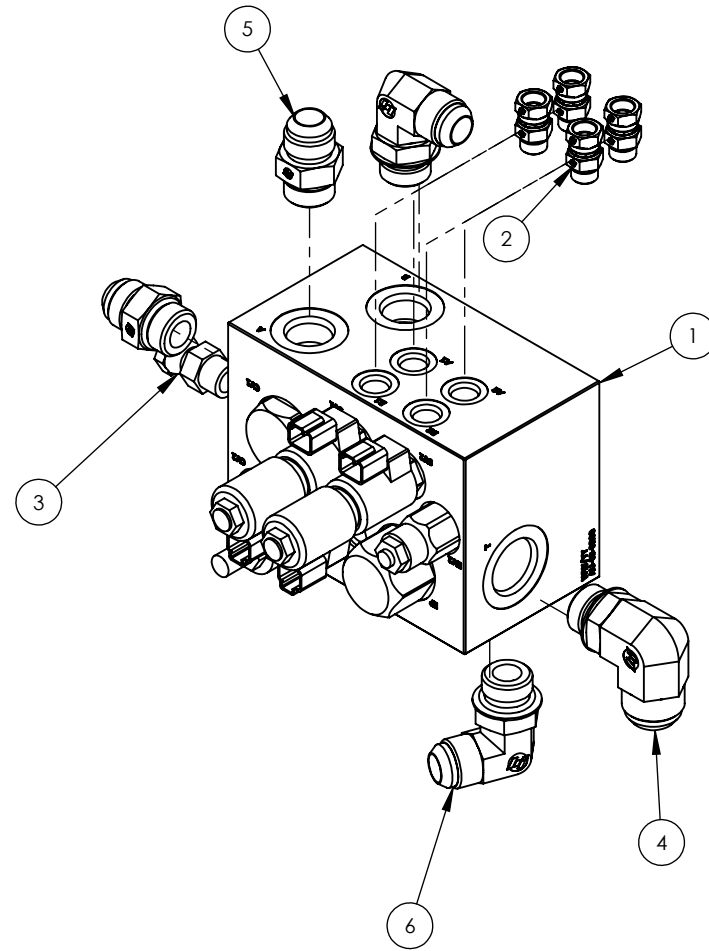
*SEE HOSE CHART FOR HOSE ROUTING AND PART NUMBERS.

SP-01-1551-XX (66, 72, 84)

ITEM NO.	PART NUMBER	DESCRIPTION	QTY.
1	AU-02-1613-6XX20	1551 BLOWER BODY	1
2	AU-01-1600	HYDRAULIC CYLINDER	1
3	AU-02-1602	BACK FOOT	2
4	AU-02-1501-20-2	IMPELLER FAN	1
5	AU-02-1502-4	CHUTE	1
6	AU-03-1504-XX	SINGLE BEVEL BOLT ON CUT EDGE	1
7	AU-02-1505	AUGER MOTOR MOUNT	1
8	AU-02-1671	SKID SHOE, L.H.	1
9	AU-02-1672	SKID SHOE, R.H.	1
10	AU-03-1625-1.750	FLANGE BEARING	1
11	AU-03-1674-208	FAN RESTRICOR	1
12	AU-03-1836	CHUTE HOLD-DOWN BRACKET	1
13	AU-02-1757	CHUTE TOP	1
14	AU-02-1756	STEP ASSEMBLY	2
15	AU-02-1751	STEP ASSEMBLY	1
16	AU-03-5140	SPACER	1
17	AU-03-5114	SPACER	1
18	AU-03-1837	CHUTE SPACER	1
19	AU-03-5121	MANUAL CANISTER	1
20	AU-03-5042	ROTATION SPROCKET	1
21	AU-03-1839	ROTATION GUARD	1
22	AU-02-1504-XX-3	AUGER	1
23	104-4236-006	AUGER DRIVE MOTOR	1
24	105-1556-006	FAN MOTOR	1
25	AU-03-1510	ROTATION MOTOR	1
26	AU-03-20056	LOCKING PIN WITH RETAINER	2
27	HW-12X1.75X25MMG5	M12X1.75X25MM HEX HEAD BOLT	4
28	HW-1 USS FW	1" FLAT WASHER	2
29	HW-.625-11X2.0 PB	5/8"-11 X 2" PLOW BOLT	8
30	HW-.625-11 NYL	5/8"-11 NYLOCK NUT	8
31	HW-.500-13X1.75G5	1/2"-13X1 3/4 GRADE 5 BOLT	18
32	HW-.500 FW	1/2" FLAT WASHER	22
33	HW-.500-13 NYL	1/2-13 NYLOCK NUT ZINC	18
34	HW-.500-13X5G5 TB	1/2"-13 X 5" GRADE 5 TAP BOLT	1
35	HW-.500-13 NUT	1/2-13 HEX NUT ZINC	2
36	HW-.500-13X2.0 CS	1/2"-13 X 2" SOCKET HEAD CAP SCREW	4
37	HW-.375-16X2 CB	3/8"-16 X 2" CARRIAGE BOLT	2
38	HW-.375 USS FW	3/8" FLAT WASHER	6
39	HW-.375 LW	3/8" LOCK WASHER	2
40	HW-.375-16 NYL JN	3/8" NYLOCK JAM NUT	2
41	HW-.375-16X2.5 G5	3/8-16 X 2.50 GRADE 5 BOLT	2
42	HW-.375-16 NYL	3/8 - 16 NYLOCK NUT	3
43	HW-.375-16X1.25G5	3/8"-16 X 1 1/4" GRADE 5 BOLT	1
44	HW-.375-16X1.0 G5	3/8"-16 X 1" GRADE 5 BOLT	3
45	HW-.25-20X1.0SHCS	1/4"-20X1" SOCKET HEAD CAP SCREW	1
46	HW-.25-20X1.0G5	1/4"-20X1" GRADE 5 BOLT	9
47	HW-.25 USS FW	1/4" USS FLAT WASHER	16
48	HW-.25-20 NYL	1/4"-20 NYLOCK NUT	10
49	AU-03-3014	IMPELLER FAN NUT	1
50	.125X 2.00	COTTER PIN	1
51	AU-03-3200	STANDARD FLOW MANIFOLD BLOCK	1
52	H250-FT12	-10 MALE ORB TO 1/4" NPT FEMALE	2
53	H250-FT05	1/4" NPT ST 90	2
54	H500-FT11	-10 MORB TO 1/2" FEMALE PIPE SWIVEL	4
55	H250-FT1110	-4 MALE ORB TO 1/4" NPT FEMALE SWIVEL	1
56	H500-FT21-08-12	8 MALE JIC TO 12 MALE ORB	2
57	HSL500	HOSE SLEEVE	1
58	AU-03-9990-12-12	1/2" FEMALE COUPLER	1
59	AU-03-9991-12-12	1/2" MALE COUPLER	1
60	AU-03-1775	WIRE HARNESS	1



ITEM NO.	PART NUMBER	DESCRIPTION	QTY.
1	AU-02-3200	MANIFOLD BLOCK	1
2	H250-FT1106	6 ORB MALE -1/4 NPT SWIVEL	4
3	H250-FT1108	8 MALE ORING X 4 FEMALE	1
4	H750-FT22-16-12	16 MALE ORB TO 12 JIC MALE 90	1
5	H750-FT21-12-12	12 MALE JIC X 12 MALE ORB	2
6	H750-FT22-12-12-NWO	12 MALE ORB TO 12 JIC MALE 90	2



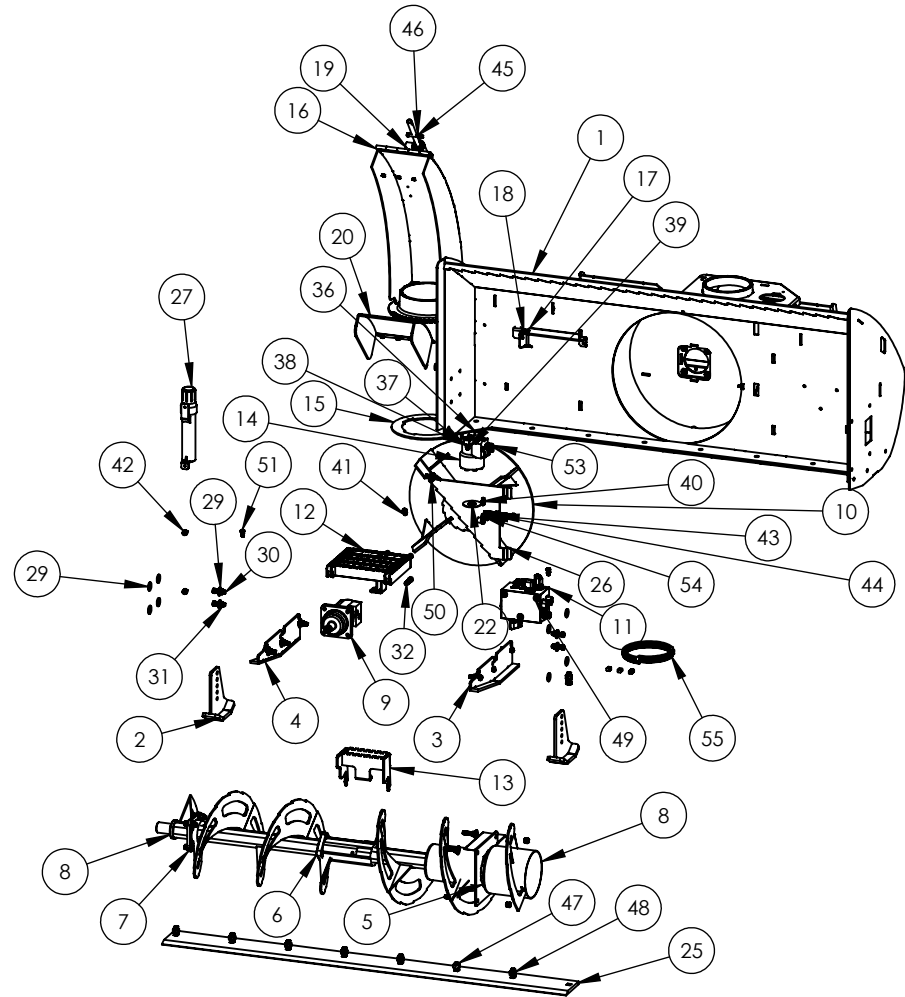
*ITEMS WITH XX ARE DEPENDANT TO WIDTH OF UNIT.

*84" BLOWER HAS 10 PLOW BOLTS AND 10 NUTS.

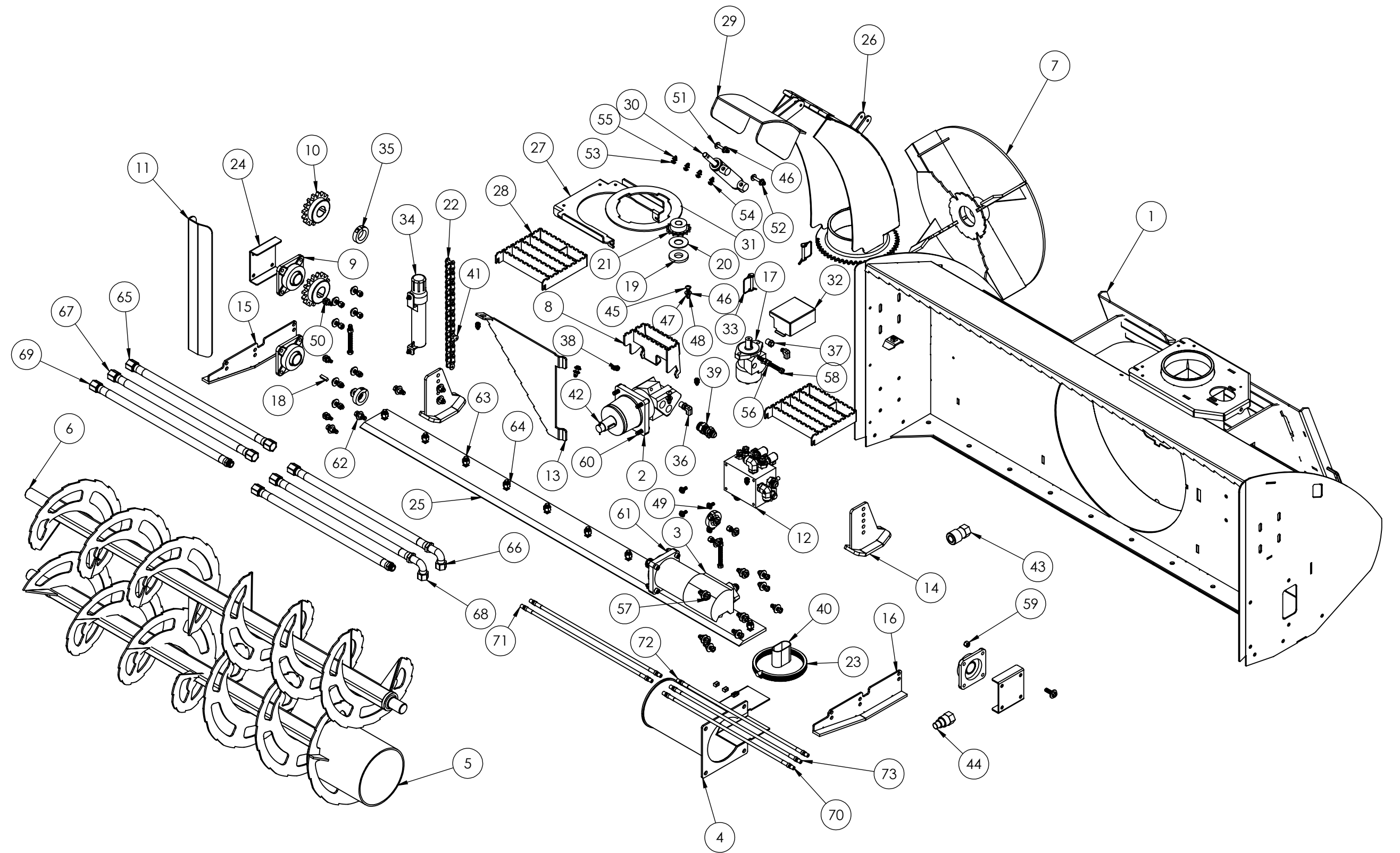
*SEE HOSE CHART FOR HOSE ROUTING AND PART NUMBERS.

ITEM NO.	PART NUMBER	DESCRIPTION	QTY.
1	AU-02-1613-6XX	1550 BLOWER BODY	1
2	AU-02-1602	BACK FOOT	2
3	AU-02-1671	SKID SHOE, L.H.	1
4	AU-02-1672	SKID SHOE, R.H.	1
5	AU-02-1505	AUGER MOTOR MOUNT	1
6	104-4236-006	AUGER DRIVE MOTOR	1
7	AU-03-1625-1.750	FLANGE BEARING	1
8	AU-02-1504-XX-3	AUGER	1
9	105-1374-006	HIGH FLOW FAN MOTOR	1
10	AU-02-1501-5	1550 FAN	1
11	AU-03-3200	STANDARD FLOW MANIFOLD BLOCK	1
12	AU-02-1756	STEP ASSEMBLY	2
13	AU-02-1751	STEP ASSEMBLY	1
14	AU-03-1510	ROTATION MOTOR	1
15	AU-03-1837	CHUTE SPACER	1
16	AU-02-1502-4	CHUTE	1
17	AU-03-1836	CHUTE HOLD-DOWN BRACKET	1
18	AU-03-20056	LOCKING PIN WITH RETAINER	2
19	AU-01-1600	HYDRAULIC CYLINDER	1
20	AU-02-1757	CHUTE TOP	1
21	AU-03-1839	ROTATION GUARD	1
22	AU-03-5140	SPACER	1
23	AU-03-5114	SPACER	1
24	AU-03-5042	ROTATION SPROCKET	1
25	AU-03-1504-XX	SINGLE BEVEL BOLT ON CUT EDGE	1
26	AU-03-1674-8	FAN RESTRICTOR	1
27	AU-03-5121	MANUAL CANISTER	1
28	HW-12X1.75X25MMG5	M12X1.75X25MM HEX HEAD BOLT	4
29	HW-.500 FW	1/2" FLAT WASHER	22
30	HW-.500-13X1.75G5	1/2"-13X1 3/4 GRADE 5 BOLT	18
31	HW-.500-13 NYL	1/2-13 NYLOCK NUT ZINC	18
32	HW-.500-13X2.0 CS	1/2"-13 X 2" SOCKET HEAD CAP SCREW	4
33	HW-1 USS FW	1" FLAT WASHER	1
34	AU-03-3014	IMPELLER FAN NUT	1
35	.125X 2.00	COTTER PIN	1
36	HW-.375-16X2 CB	3/8"-16 X 2" CARRIAGE BOLT	2
37	HW-.375 USS FW	3/8" FLAT WASHER	10
38	HW-.375 LW	3/8" LOCK WASHER	2
39	HW-.375-16 NUT	3/8-16 NUT	2
40	HW-.25-20X1.0SHCS	1/4"-20X1" SOCKET HEAD CAP SCREW	1
41	HW-.25-20 NYL	1/4"-20 NYLOCK NUT	10
42	HW-.25 USS FW	1/4" USS FLAT WASHER	16
43	HW-.500-13 NUT	1/2-13 HEX NUT ZINC	1
44	HW-.500-13X5G5 TB	1/2"-13 X 5" GRADE 5 TAP BOLT	1
45	HW-.375-16X2.5 G5	3/8-16 X 2.50 GRADE 5 BOLT	2
46	HW-.375-16 NYL	3/8 - 16 NYLOCK NUT	2
47	HW-.625-11X2.0 PB	5/8"-11 X 2" PLOW BOLT	8
48	HW-.625-11 NYL	5/8"-11 NYLOCK NUT	8
49	HW-.375-16X1.0 G5	3/8"-16 X 1" GRADE 5 BOLT	4
50	HW-.375-16 NYL JN	3/8" NYLOCK JAM NUT	1
51	HW-.25-20X1.0G5	1/4"-20X1" GRADE 5 BOLT	9
52	H250-FT1110	-4 MALE ORB TO 1/4" NPT FEMALE SWIVEL	1
53	H250-FT05	1/4" NPT ST 90	2
54	H250-FT12	-10 MALE ORB TO 1/4" NPT FEMALE	2
55	AU-03-1775	WIRE HARNESS	1

SP-01-1550-XX (72, 72-HF, 84, 84-HF)



ITEM NO.	PART NUMBER	DESCRIPTION	QTY.
1	AU-02-1760-84	1552 HF BLOWER BODY	1
2	AU-03-1725	HF FAN MOTOR	1
3	AU-03-1726	HF AUGER MOTOR	1
4	AU-02-1700	HF AUGER MOTOR MOUNT	1
5	AU-02-1759-84	HF AUGER, LOWER GEN 6	1
6	AU-02-1758-84	HF EXTREME AUGER, TOP GEN 6	1
7	AU-02-1702-2	HF IMPELLAR FAN GEN 6	1
8	AU-02-1751	STEP ASSEMBLY	1
9	AU-03-1625-1.750	FLANGE BEARING	3
10	AU-03-4002	16 TOOTH SPROCKET	2
11	AU-03-1858	CHAIN GAURD	1
12	AU-02-3240-ASM	HIGH FLOW MANIFOLD ASSEMBLY	1
13	AU-03-1854	FAN RESTRICTOR	1
14	AU-02-1602	BACK FOOT	2
15	AU-02-1672	SKID SHOE, R.H.	1
16	AU-02-1671	SKID SHOE, L.H.	1
17	AU-03-1510	ROTATION MOTOR	1
18	AU-03-1626	3/8X1.375 KEY	1
19	AU-03-5114	SPACER	1
20	AU-03-5140	SPACER	1
21	AU-03-5042	ROTATION SPROCKET	1
22	AU-02-1708	TWIN AUGER CHAIN	1
23	AU-03-1775	WIRE HARNESS	1
24	AU-03-1805	BEARING PUSH PLATE	2
25	AU-03-1504-84	SINGLE BEVEL BOLT ON CUT EDGE	1
26	AU-02-1502-4	CHUTE	1
27	AU-03-1836	CHUTE HOLD-DOWN BRACKET	1
28	AU-02-1756	STEP ASSEMBLY	2
29	AU-02-1757	CHUTE TOP	1
30	AU-01-1600	HYDRAULIC CYLINDER	1
31	AU-03-1837	CHUTE SPACER	1
32	AU-03-1839	ROTATION GUARD	1
33	AU-03-20056	LOCKING PIN WITH RETAINER	2
34	AU-03-5121	MANUAL CANISTER	1
35	AU-03-5098	1 3/4 LOCK COLLAR	3
36	H250-FT05	1/4" NPT ST 90	2
37	H250-FT12	-10 MALE ORB TO 1/4" NPT FEMALE	2
38	H250-FT1110	-4 MALE ORB TO 1/4" NPT FEMALE SWIVEL	1
39	H750-FT21-16-12	-16 MALE ORB TO -12 MALE JIC	4
40	HSL750	HOSE SLEEVE	1
41	AU-03-80H-ML	MASTER LINK	1
42	HW-.125 X 2.0 CP	1/8" X 2" COTTER PIN	1
43	AU-03-9990-12-34	FEMALE QUICK COUPLER	1
44	AU-03-9991-12-34	MALE QUICK COUPLER	1
45	HW-.375-16X2 CB	3/8"-16 X 2" CARRIAGE BOLT	2
46	HW-.375 USS FW	3/8" FLAT WASHER	18
47	HW-.375 LW	3/8" LOCK WASHER	2
48	HW-.375-16 NUT	3/8-16 NUT	2
49	HW-.375-16X1.0 G5	3/8"-16 X 1" GRADE 5 BOLT	4
50	HW-.375-16X1.5 G5	3/8"-16 X 1 1/2" GRADE 5 BOLT	4
51	HW-.375-16X2.5 G5	3/8-16 X 2.50 GRADE 5 BOLT	2
52	HW-.375-16 NYL	3/8 - 16 NYLOCK NUT	6
53	HW-.25-20X1.0G5	1/4"-20X1" GRADE 5 BOLT	10
54	HW-.25 USS FW	1/4" USS FLAT WASHER	20
55	HW-.25-20 NYL	1/4"-20 NYLOCK NUT	10
56	HW-.500-13 NUT	1/2-13 HEX NUT ZINC	4
57	HW-.500-13X1.75G5	1/2"-13X1 3/4 GRADE 5 BOLT	26
58	HW-.500-13X5G5 TB	1/2"-13 X 5" GRADE 5 TAP BOLT	3
59	HW-.500-13 NYL	1/2-13 NYLOCK NUT ZINC	26
60	HW-.500-13X2.0 CS	1/2"-13 X 2" SOCKET HEAD CAP SCREW	8
61	HW-.500-13 RLN	1/2"-13 REVERSE LOCK NUT	4
62	HW-.500 FW	1/2" FLAT WASHER	30
63	HW-.625-11X2.0 PB	5/8"-11 X 2" PLOW BOLT	10
64	HW-.625-11 NYL G5	5/8"-11 NYLOCK NUT G5	10
65	PH750-2600	HF SNOW BLOWER HOSE	1
66	PH750-2900	HF HOSE SNOW BLOWER	1
67	PH750-3200	HF SNOW BLOWER HOSE	1
68	PH750-3200-90	HF SNOW BLOWER HOSE	1
69	PH750-8700	HF MACHINE HOSE SNOW BLOWER	2
70	PH250-4000	HF SNOW BLOWER HOSE	1
71	AU-03-PH2556	SNOW BLOWER HOSE	1
72	AU-03-PH2515	SNOW BLOWER HOSE	2
73	AU-03-PH2550	SNOW BLOWER HOSE	1



*84DA5 MODEL USES AU-03-9990-12-12 AND AU-03-9991-12-12 COUPLERS.

*84DA6 MODEL USES AU-03-9990-12-58 AND AU-03-9991-12-58 COUPLERS.

ITEM NO.	PART NUMBER	DESCRIPTION	QTY.
1	AU-02-3200	MANIFOLD BLOCK	1
2	H250-FT1106	6 ORB MALE -1/4 NPT SWIVEL	4
3	H500-FT12-1208	-8 MALE ORB X 1/2" FEMALE 90DEG.	3
4	H500-FT1216	16MOR-8FP STR	1
5	H500-FT1212	12MOR-8FP	2
6	H250-FT1108	8 MALE ORING X 1/4 NPT FEMALE	1

