



## THE LANDSCAPERS CHOICE

*Primary Seeder*  
*Models KLS-60 and KLS-72*



807 McKay Ave S.

Alexandria, Minnesota 56308

877-378-4642

[www.skidpro.com](http://www.skidpro.com)

## **THANK YOU!**

You have invested in the best implement of its type on the market today.

The care you give your Skid Pro equipment will greatly determine your satisfaction with its performance and its service life. We urge a careful study of this manual to provide you with a thorough understanding of your new implement before operating, as well as suggestions for operation and maintenance.

If your manual should become lost or destroyed, Skid Pro will be glad to provide you with a new copy. Please call us at 1-800-458-9129, or visit our website for an downloadable copy.

Because Skid Pro maintains an ongoing program of product improvement, we reserve the right to make improvements in design or changes in specifications without incurring any obligation to install them on units previously sold.

## **RETAIL CUSTOMER'S RESPONSIBILITY**

It is the Retail Customer and/or Operator's responsibility to read the Operator's Manual, to operate, maintain and store the product in accordance with all instructions and safety procedures. Failure of the operator to read the Operator's Manual is a misuse of this equipment.

It is the Retail Customer and/or Operator's responsibility to inspect the product and to have any part(s) repaired or replaced when continued operation would cause damage or excessive wear to the other parts or cause a safety hazard.

It is the Retail Customer and/or Operator's responsibility to contact Skid Pro immediately for any warranty claims. Claims for warranty consideration must be made within seven (7) days of failure.

It is the Retail Customer and/or Operator's responsibility for any cost incurred by the dealer for traveling to or hauling of the product for the purpose of performing a warranty obligation or inspection.

# IMPORTANT SAFETY PRECAUTIONS

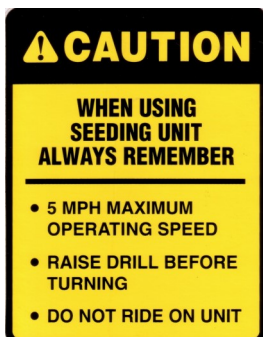
This symbol is used to call attention to safety precautions that should be followed by the operator to avoid accidents.

When you see this symbol, carefully read the message that follows and heed its advice. Failure to comply with safety precautions could result in serious bodily injury.



Safety of the operator is one of the main concerns in designing and developing a piece of equipment. This product was designed by Skid Pro with as many safety features as possible. However, every year many accidents occur which could have been avoided by a few seconds of thought and a more careful approach to handling equipment. You, the operator, can avoid many accidents by observing the following precautions in this section. To avoid personal injury, study the following precautions and insist those working with you, and for you, follow them.

1. Read the Operator's Manual. Failure to read the Operator's Manual is considered a misuse of this equipment.
2. Become familiar with all the machine's controls and all the caution, warning, and danger decals affixed to the machine before attempting to start or operate.
3. Before starting or operating the machine, make a walk around inspection and check for obvious defects such as loose mounting bolts and damaged components. Correct any deficiency before starting.
4. Do not allow children to operate the implement. Do not allow adults to operate it without proper instruction.
5. Do not carry passengers.
6. Keep the area of operation clear of all persons, particularly small children and pets. The operator should cease operation whenever anyone comes within the area.
7. Lower the implement to the ground, stop tractor engine, and apply parking brake before leaving the vehicle.
8. Keep hands and feet away from implement.
9. Wear personal protective equipment such as, but not limited to, protection for eyes, ears, feet, hands, and head when operating or repairing the equipment. ***Do not wear loose clothing or jewelry that may catch on equipment's moving parts.***
10. When performing adjustments or maintenance on the implement, first lower it to the ground or block it securely at a workable height.
11. Never stand between the tractor and implement when the tractor is being backed to the hitch.
12. Reduce speed when transporting implement to avoid bouncing and momentary loss of steering.
13. Use tractor flashing warning lights, day or night, when transporting implement on road or highways unless prohibited by law.
14. Use a rollover protective structure and seat belt equipped tractor for all implement operations.



## ***ALWAYS HEED ALL CAUTION AND DANGER WARNINGS.***

## SPECIFICATIONS

- ♦ Single Seedbox
- ♦ Solid Stand Style of Planting
- ♦ Individually Spring Loaded to follow contour of rougher terrain
- ♦ Two Rows of Spring-Loaded Cast Iron Cultipacker
- ♦ Ground Driven
- ♦ Agitator as standard equipment
- ♦ For Worked Ground Short-Coupled for Use Behind Smaller HP Tractors
- ♦ Optional Universal Skid Steer Plate available.

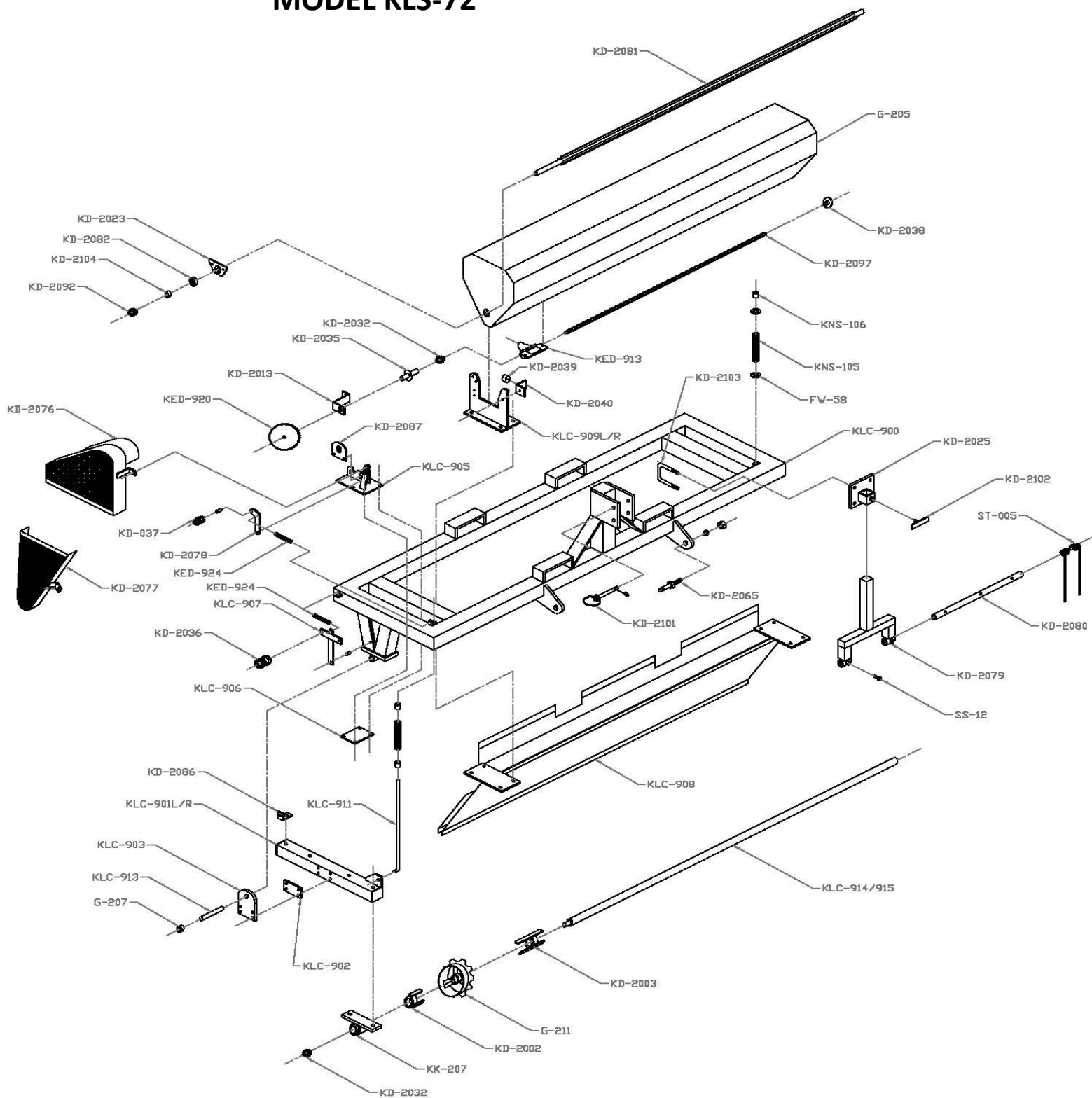
## BEFORE OPERATING OR SERVICING

- Avoid working under the unit; however, if it becomes absolutely necessary, make sure the implement is safely blocked.
- Always make certain everyone and everything is clear of the machine before beginning operation.
- Verify that all safety shields are in place and secure.
- Ensure that all applicable safety decals are installed and legible.

## DURING OPERATION

- Regulate speed to field conditions. Maintain complete control at all times.
- Never lubricate equipment while in operation.
- Keep away from overhead power lines. Electrical shock can cause serious injury or death.
- Use extreme care when operating close to ditches, fences, or on hillsides.
- Do not leave towing vehicle unattended with engine running.
- Seed being transported can contain seed treatment. Read and follow all requirements for personal protective equipment and first aid as outlined on seed tags.

# MODEL KLS-72



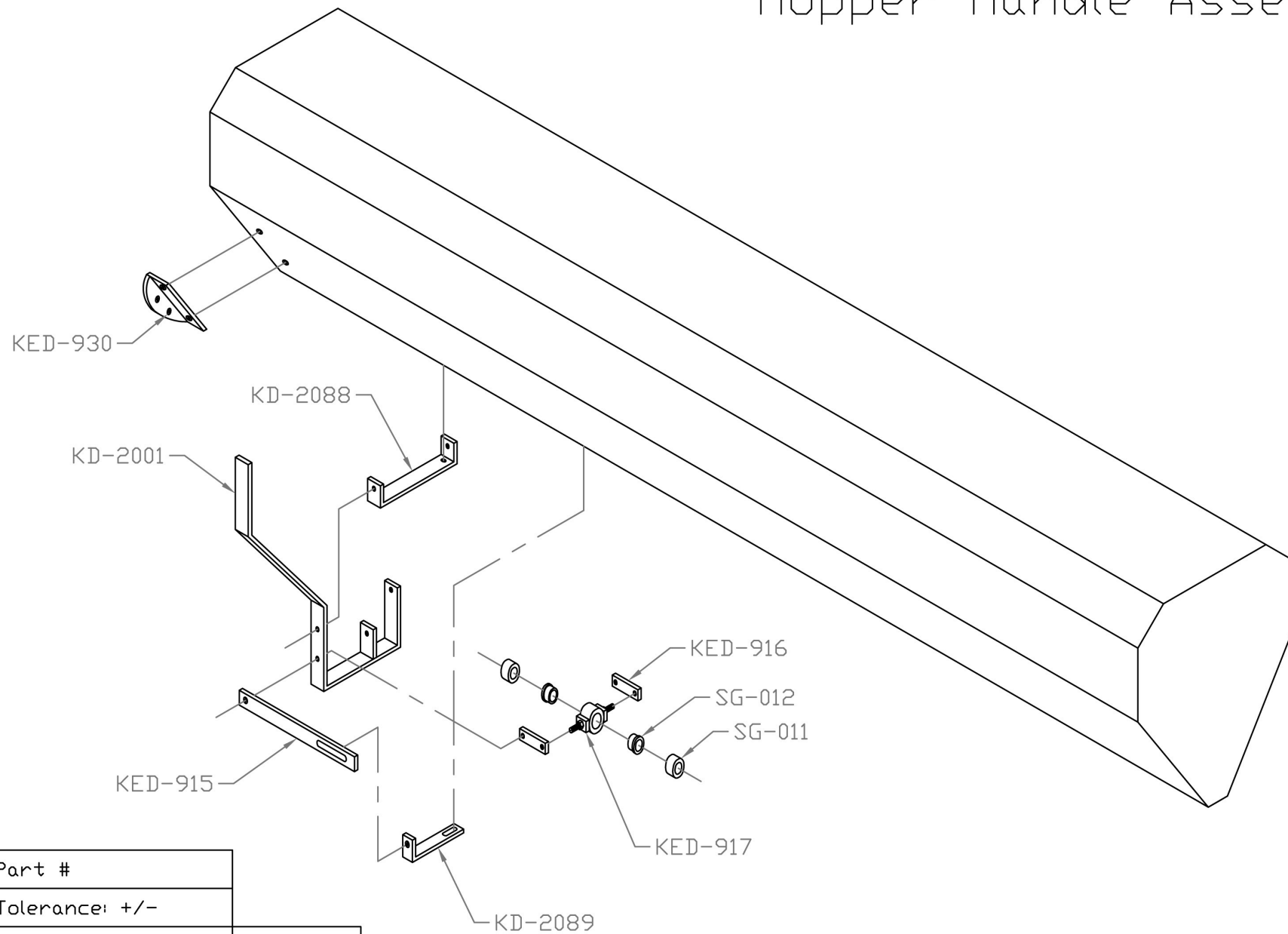
Model # KLC-72

DATE 11/5/19

Rev.# 3

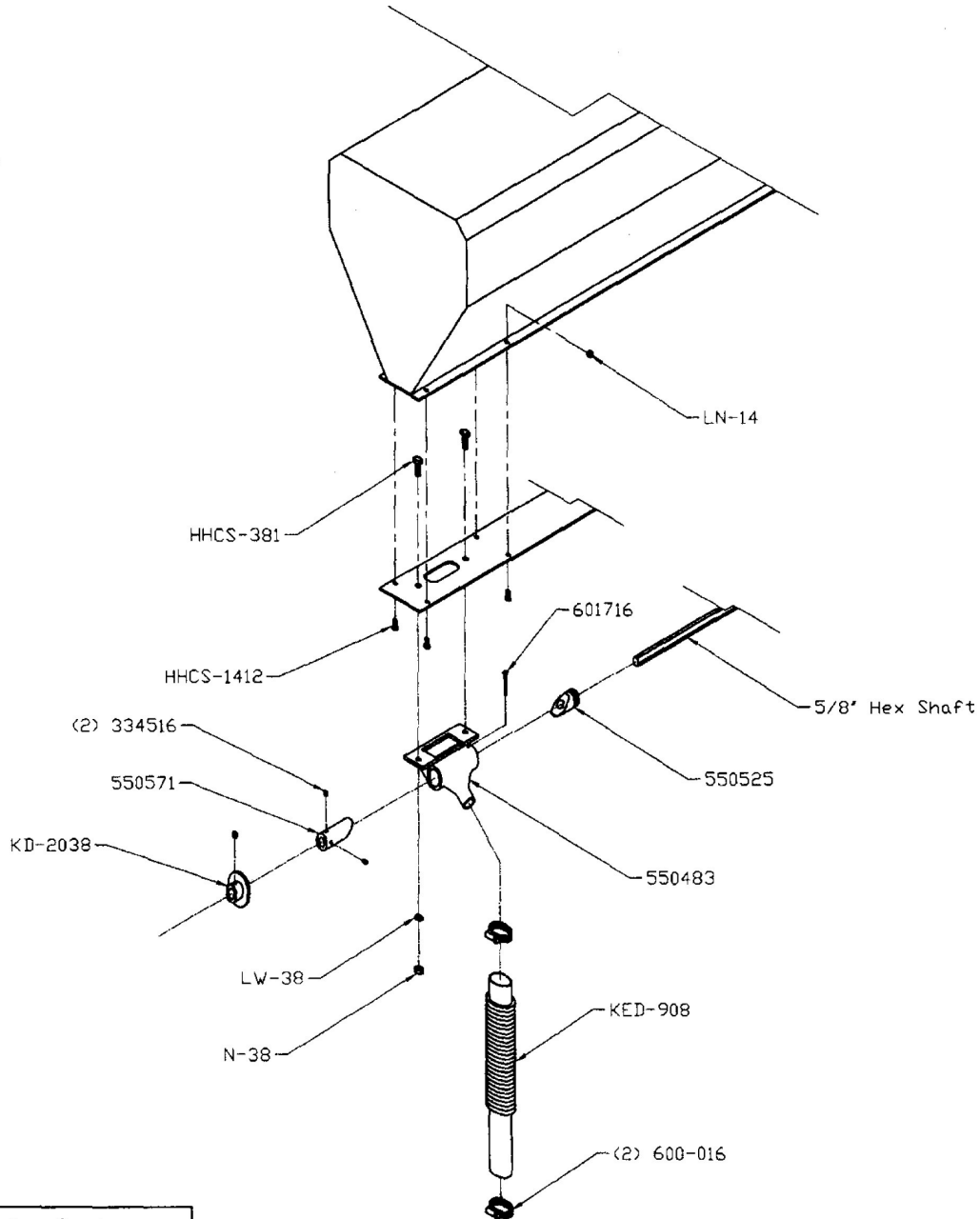
User: JH

# Hopper Handle Assembly



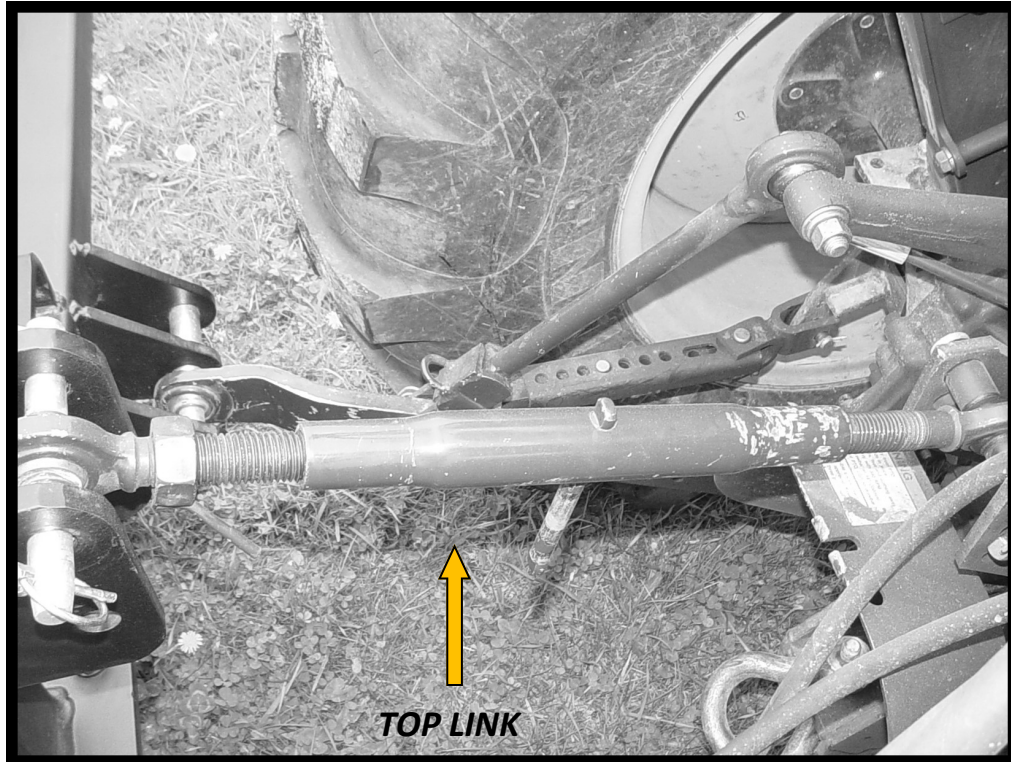
|                |        |
|----------------|--------|
| Part #         |        |
| Tolerance: +/- |        |
| Date:          | Rev.#  |
|                | Scale: |
|                | User:  |

# METER SYSTEM



|                 |            |
|-----------------|------------|
| Metering System |            |
| Tolerance: +/-  |            |
| Date: 04/22/05  | Rev.# 1    |
|                 | Scale: 1-1 |
|                 | User: JH   |

## DEPTH CONTROL



Depth control is determined by one measurement

The front slicing disc can be adjusted by the top link. Shortening the top link will put more depth and pressure on to the slicing discs; lengthening the top link will remove depth and pressure from the slicing discs.

| <b>Crop</b>           | <b>Seeding Rate</b> | <b>Seed Drop</b> |
|-----------------------|---------------------|------------------|
|                       | <b>lbs/ acre</b>    | <b>Setting</b>   |
| Alfalfa               | 15-20               | 3/16"            |
| Bahia                 | 25-30               | 1/8"             |
| Bermuda Grass, Common | 10-20               | 1/16"            |
| Birdsfoot Trefoil     | 8-10                | 3/32"            |
| Blue Grass            | 60-100              | 5/8"             |
| Buckwheat             | 45-60               | 7/16"            |
| Clover, Red           | 8-12                | 1/8"             |
| Clover, Sweet         | 10-13               | 3/16"            |
| Illinois Bundleflower | 2-3                 | 1/16"            |
| Millet, Brown Top     | 30-50               | 3/8"             |
| Milo (grain sorghum)  | 10-25               | 3/16"            |
| Oats                  | 65-95               | 11/16"           |
| Orchardgrass          | 10-12               | 3/8"             |
| Partridge Peas        | 10-15               | 1/8"             |
| Peas, Austrian Winter | 90-120              | 11/16"           |
| Rye Grass             | 80-110              | 1/2"             |
| Rye, Grain            | 80-110              | 9/16"            |
| Switchgrass           | 8-14                | 1/8"             |
| Timothy               | 8-12                | 1/8"             |
| Turf Grass Mix        | 60-100              | 5/8"             |
| Turnips               | 3-4                 | 1/16"            |
| Wheat                 | 120-180             | 3/4"             |
| <b>Crop</b>           | <b>Seeding Rate</b> | <b>Seed Drop</b> |
|                       | <b>Spacing</b>      | <b>Setting</b>   |
| Corn                  | 6" - 7"             | 5/8"             |
| Soybeans              | 3" - 4"             | 5/8"             |
| Sunflowers            | 4" - 5"             | 3/8"             |

NOTE: Seeding calibrations vary. Above chart is suggestion only, and calibrations should be verified.

# Metering System Calibration Calculations

Every attempt has been made to provide settings for the most common seeds which are used in the Drill. However, it is understood that other seed types and/or seeding rates may be desired depending upon the usage of the implement. Below is the metering system calibration sequence:

## Steps for Calibration of Seed Metering System

Block all but one seed drop inside the seed hopper.

*Note:* Capture Seed from (1) Metering System Only – Otherwise Conversion Calculations Below Will Be Affected and an Inaccurate Result Will Occur.

2. Place a Small Cup or Plastic Bag or Other Container Directly under the drop shoot to Collect the Seed as it is Metered from the Hopper.

3. Fill the Seed Hopper with a Small Amount of the Seed Type to be calibrated – The Seed can be placed over the Metering System on the Left Side to Reduce Seed Dropped on the Ground.

4. Using the Provided Seed Rate Chart – Set the Metering System to the Approximate Desired Settings.

*Note:* Use the Seed Chart to judge seed size and lbs/acre to find starting settings.

5. Raise the Drill off the Ground.

**CAUTION: Use Stands or Jacks to Block the Frame of the Drill To Prevent Serious Crushing Injury!!!**

6. Rotate the Culti-Packer 20 Revolutions – As the Culti-Packer Wheels are Rotating, Seed will Meter from the Hopper. Ensure that Seed Completely Covers the Metering System in the Hopper During the 20 Rotations for Accurate Results. For drills with seed metering drive wheel rotate the drive tire 13 ½ revolutions.

7. Weigh the Captured Seed in “Grams”.

8. Multiply the Seed Weight (in Grams) by 3.2013 to find Seeding Rate in lbs/acre.

9. Adjust the Metering System Opening and Repeat Steps 6 – 8, if Rate needs to be Re-Adjusted.

***Please call Skid Pro Inc. at 877-378-4642 if there are any questions or concerns during the calibration of the drill.***



PO Box 982, 807 McKay Ave S.  
Alexandria, MN 56308  
Toll Free: 877-378-4642  
[www.skidpro.com](http://www.skidpro.com)

## SKID PRO WARRANTY

Skid Pro warrants above attachments for twenty-four months from date of shipment to the original owner. Warranty covers products to be free from defects in material and workmanship when properly set up and operated in accordance with Skid Pro's recommendations.

### **WARRANTY CLAIM PROCEDURE**

All warranty claims must be submitted within the manufacturer's limited warranty period. Pictures and/or a video as well as a detailed description of the events leading up to the failed component(s) are required to properly document all potential warranty claims. To submit a warranty claim, contact your Skid Pro Product Guru or complete a [Warranty Claim Form](#) on our website and send it along with supporting pictures/video to [sales@skidpro.com](mailto:sales@skidpro.com). A valid credit card is required to be on file with Skid Pro to begin processing a warranty claim. No warranty claim will be processed without a valid credit card on file. Upon receipt, the warranty claim information will be reviewed and once determined to be a valid claim, a return authorization number will be issued for the return of the defective part(s) if applicable and replacement part(s) will be shipped. If it is determined the defective parts are to be returned and they are not received by Skid Pro within 30 days of receiving the replacement parts, the buyer's credit card on file will be charged for the cost of the replacement parts plus any shipping charges. Tampering with the failed part (i.e. disassembling a motor or cylinder) will void the warranty.

### **EXCLUSIONS OF WARRANTY**

Skid Pro's requirement for any issue with respect to attachments shall be limited to repairing or replacing the defective part, as this is a parts-only warranty and does not include labor to replace or install the part, interest accrued or payments made for financing, or downtime from resulting issue. Skid Pro has full technical support to assure customer replaces the part properly.

This warranty shall not apply to any attachment's wear items, or attachments that have been repaired or altered outside the Skid Pro factory in any way, or that has been subject to misuse, negligence, or accident beyond Skid Pro's recommended use and/or machine rated capacity.

This warranty is exclusive and in lieu of all other warranties and conditions. Skid Pro disclaims all other warranties and conditions, express or implied, including any implied warranties or conditions of merchantability or fitness for a particular purpose. In no event shall Skid Pro be liable for any special, incidental, indirect or consequential damage, whatsoever, including, but not limited to, loss or interruption of business, lost profits, or loss of machine use, whether based on contract, warranty, tort, negligence, strict liability, statute or otherwise, even if Skid Pro has been advised of the possibility of such damages.

Hoses and couplers are tested on the attachment prior to shipment and are excluded from the warranty. It is the responsibility of the operator to ensure adequate clearance and hose routing as each carrier machine differs and improper routing can lead to hose damage and premature failure. If hose length is an issue due to the style or type of carrier machine, it is the responsibility of the end user to source correctly sized hoses as they are outside of the normal distribution of carrier machines within the industry.

No agent, employee, or representative of Skid Pro has any authority to bind said company to any affirmation, representation, or warranty concerning its machinery and/or attachments except as specifically set forth herein. Any disagreement or dispute of warranty policy or customer expectations of product, soundness, functionality, or performance would take place in Douglas County, Alexandria, MN, where Skid Pro operates.