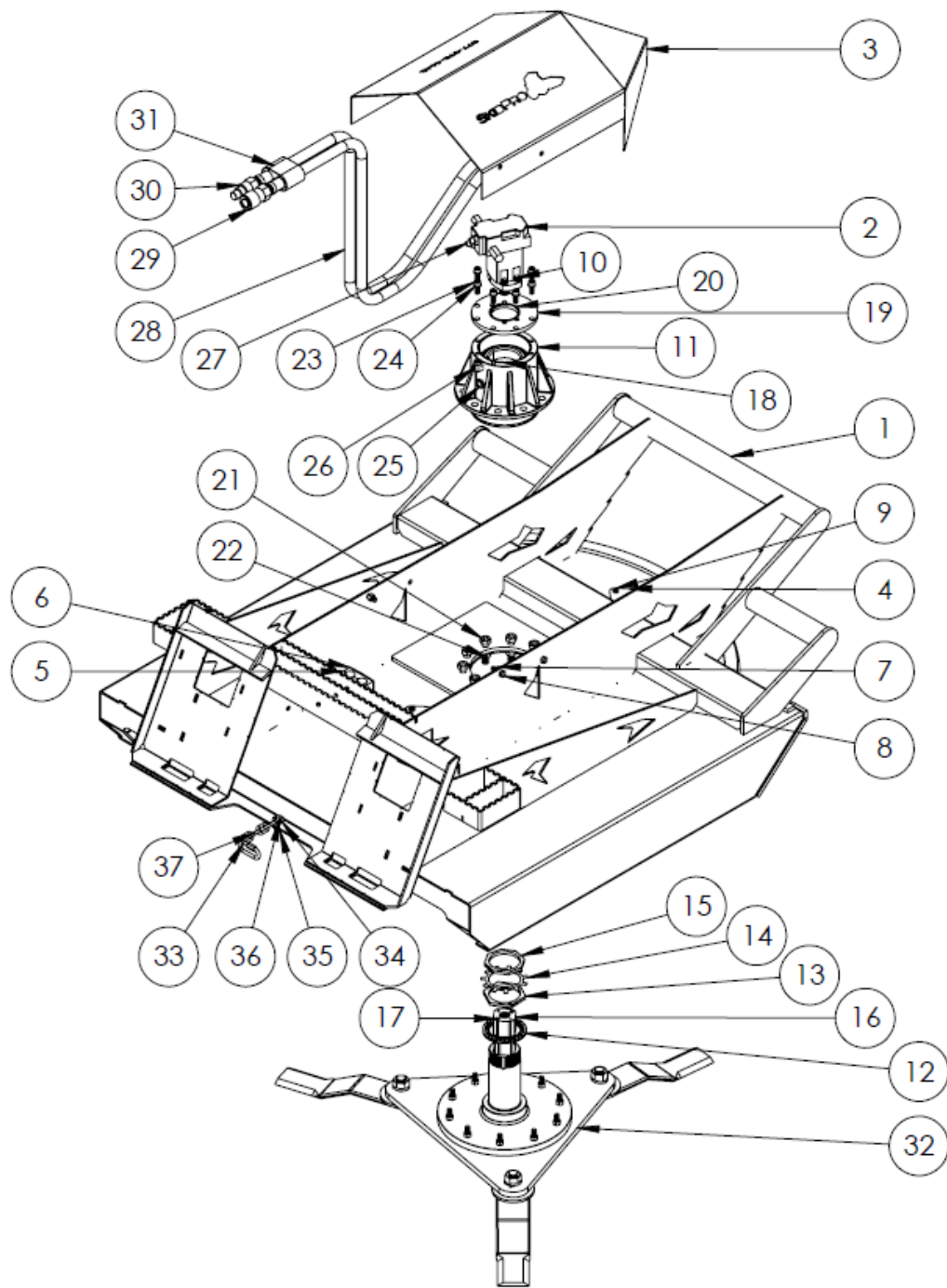


# PARTS DIAGRAMS AND LISTS

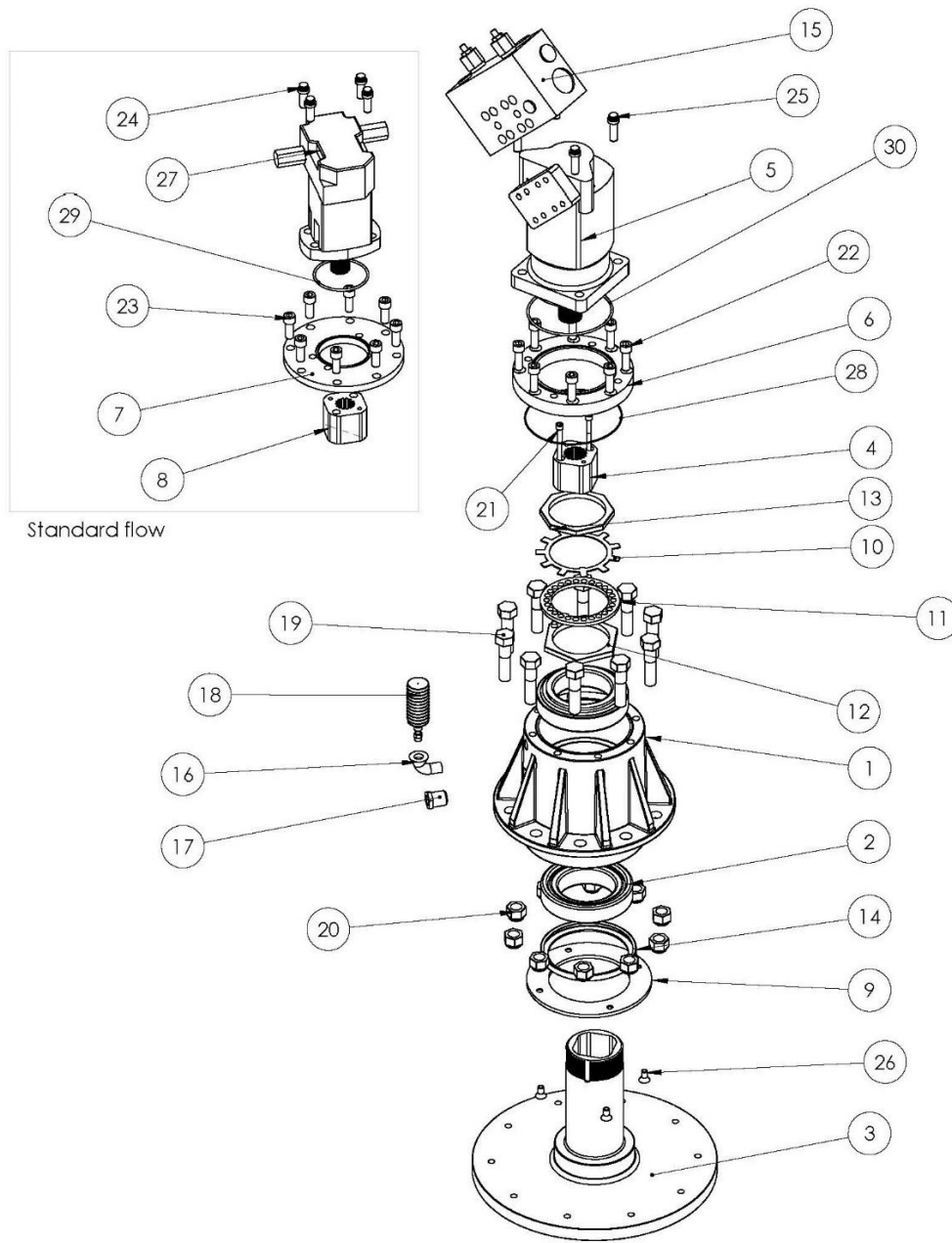
## Brush Cutter - Diagram A



## Brush Cutter – Parts List A

| ITEM NO. | PART NUMBER               | DESCRIPTION                                      | QTY. |
|----------|---------------------------|--|------|
| 1        | 765-02-0001-WIDTH         | 3 Blade Body                                     | 1    |
| 2        | 612-3-0060                | Motor, Standard Flow                             | 1    |
| 3        | 612-2-0035                | Cover  | 1    |
| 4        | 612-3-0025                | Inspection Cover                                 | 2    |
| 5        | 612-3-0068                | Hose Clamp Insert                                | 2    |
| 6        | 612-3-0069                | Hose Clamp                                       | 1    |
| 7        | HDW-.50-13NN              | 1/2-13 NYLOCK NUT ZINC                           | 3    |
| 8        | HDW-.50-13X1.50HHB5       | 1/2-13X1 1/2 HEX HEAD BOLT GRD 5<br>ZINC         | 3    |
| 9        | HDW-.375-16X1HHB5         | 3/8-16X1 HEX HEAD BOLT GRD 5<br>ZINC             | 4    |
| 10       | HDW-.50-20X1.25FCS        | 1/2-20X1-1/4 FERRY CAP SCREW                     | 4    |
| 11       | 612-2-0005-2              | Bearing Housing, Assembled                       | 1    |
| 12       | 612-3-0050-2              | Lock Nut Retainer                                | 1    |
| 13       | 612-3-0096-2              | Lock Nut   | 1    |
| 14       | 612-3-0051-2              | Jam Nut Retainer                                 | 1    |
| 15       | 612-3-0095-2              | Jam Nut  | 1    |
| 16       | 612-3-0110-20             | Hub, Standard Flow                               | 1    |
| 17       | HDW-.3125-<br>24X2.50SHCS | 5/16-24-21/2 SHCS                                | 2    |
| 18       | 612-3-0133                | O-ring (Motor Mounting Plate)                    | 1    |
| 19       | 612-3-0111-20             | Motor Mounting Plate Standard<br>Flow            | 1    |
| 20       | 612-3-0132                | O-ring (Standard Flow Motor)                     | 1    |
| 21       | HDW-.75-16X3HHB8          | 3/4-16X3 HEX HEAD BOLT GRD 8<br>ZINC FINE THREAD | 10   |
| 22       | HDW-.75-16NN              | 3/4-16 NYLOCK NUT ZINC                           | 10   |
| 23       | HDW-.50-20X1.25SHCS       | 1/2-20X1 1/4 SHCS (For Standard<br>Flow)         | 8    |
| 24       | HDW-.50ITLW               | 1/2 INTERNAL LOCK WASHER ZINC                    | 8    |
| 25       | 612-3-0055                | Sight Glass                                      | 1    |
| 26       | 612-3-0057                | 3/8 MALE PIPE X 3/8 FEMALE PIPE 90<br>DEG        | 1    |
| 27       | 612-3-0099                | Adaptor Fitting                                  | 2    |
| 28       | 612-2-0013                | Hose Assembly                                    | 2    |
| 29       | AU-03-9990-12-12          | 1/2" Female Quick Coupler                        | 1    |
| 30       | AU-03-9991-12-12          | 1/2" Male Quick Coupler                          | 1    |
| 31       | 612-3-0067                | Hose Sleeve                                      | 1    |
| 32       | 765-02-0017-WIDTH         | Flywheel Assembly - WIDTH                        | 1    |
| 33       | 612-3-0128                | 3/8 Quick Link                                   | 1    |
| 34       | HW-.500 FW                | 1/2" FLAT WASHER                                 | 2    |
| 35       | HW-.500-13 NYL            | 1/2-13 NYLOCK NUT ZINC                           | 1    |
| 36       | HW-.500-13X1.75G5         | 1/2"-13X1 3/4 Grade 5 Bolt                       | 1    |
| 37       | 612-3-0046                | Safety Chain                                     | 1    |

# Drive Assembly - Diagram B

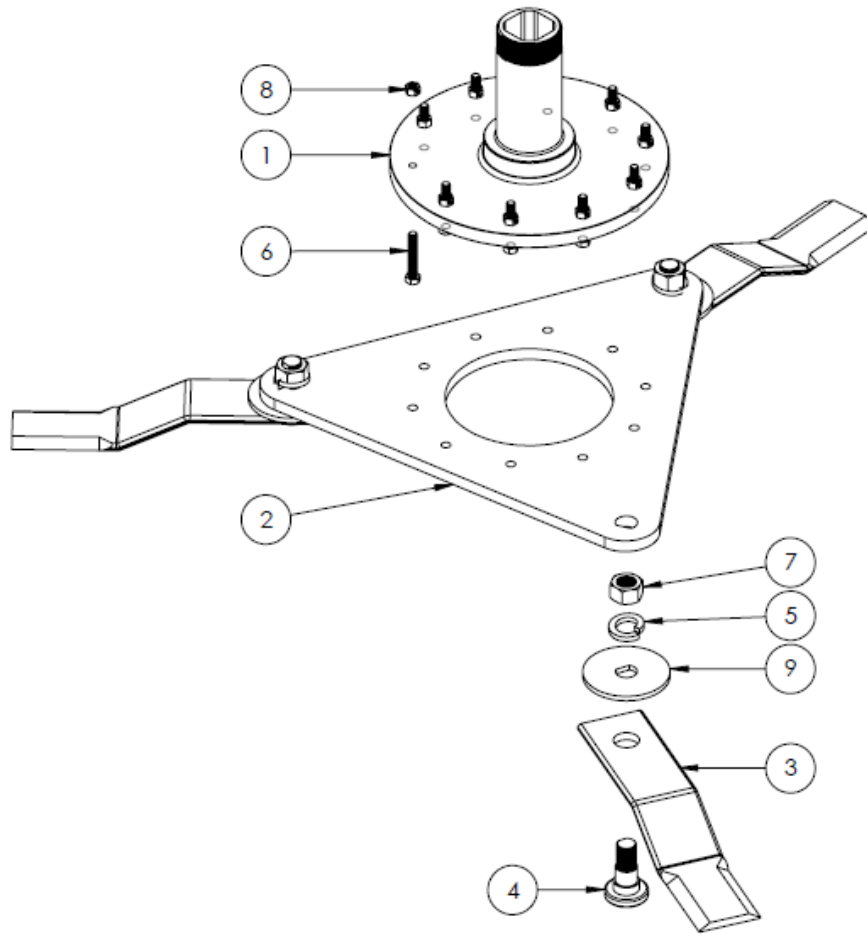


**612-2-0005-2  
Drive Assembly**

## Drive Assembly - Parts List B

| ITEM # | PART NUMBER                       | DESCRIPTION                                    | QTY. |
|--------|-----------------------------------|--|------|
| 1      | 612-2-0024                        | Bearing Housing                                | 1    |
| 2      | 612-2-0030                        | 3.750 Bearing & Race                           | 2    |
| 3      | 612-2-0025                        | Shaft  | 1    |
| 4      | 612-3-0110                        | Hub, high Flow                                 | 1    |
| 5      | 612-3-0060-HF                     | Motor Assembly, High Flow                      | 1    |
| 6      | 612-3-0111                        | Motor Mounting Plate, High Flow                | 1    |
| 7      | 612-3-0111-20                     | Motor Mounting Plate Standard Flow             | 1    |
| 8      | 612-3-0110-20                     | Hub, Stannard Flow                             | 1    |
| 9      | 612-3-0063-2                      | Seal Protection                                | 1    |
| 10     | 612-3-0051-2                      | Jam Nut Retainer                               | 1    |
| 11     | 612-3-0050-2                      | Lock Nut Retainer                              | 1    |
| 12     | 612-3-0096-2                      | Lock Nut                                       | 1    |
| 13     | 612-3-0095-2                      | Jam Nut  | 1    |
| 14     | RTD-52625TA-H                     | Seal   | 1    |
| 15     | AU-02-2052                        | Relief Manifold Assembly, (High Flow Only)     | 1    |
| 16     | 612-3-0057                        | 3/8" NPT ST 90 Fitting                         | 1    |
| 17     | 612-3-0055                        | Sight Glass                                    | 1    |
| 18     | 612-3-0056                        | Breather                                       | 1    |
| 19     | HDW-3-4 16 X3.00 HH GR8           | 3/4-16X3 HH GR8 Zinc Yellow Fine Thread Bolt   | 10   |
| 20     | HDW-3-4 16 Nylock Nut             | 3/4 Nylock Nut                                 | 10   |
| 21     | HDW-5-16 24 x2.50 SHCS            | 5/16 -24 X2 1/2 SHCS                           | 2    |
| 22     | HDW-1-2 20 x 1.50 SHCS            | 1/2-20 X1 1/2 SHCS (High Flow)                 | 8    |
| 23     | HDW-1-2 20 x 1.25 SHCS            | 1/2-20 X 1 1/4 SHCS (standard Flow)            | 8    |
| 24     | HDW-1-2 20 x 1.25 Ferry Cap Screw | 1/2-20 X 1 1/4 Ferry Cap Screw (Standard Flow) | 4    |
| 25     | HDW-1-2 20 x 1.50 Ferry Cap Screw | 1/2-20 X 1 1/2 Ferry Cap Screw (High Flow)     | 4    |
| 26     | HDW-3-8 16 X .750 FHSCS           | 3/8-16 X 3/4 FHSCS                             | 4    |
| 27     | 612-3-0060                        | Motor, Standard Flow                           | 1    |
| 28     | 612-3-0133                        | O-ring (Motor Mounting Plate)                  | 1    |
| 29     | 612-3-0132                        | O-ring (Standard Flow Motor)                   | 1    |
| 30     | 612-3-0134                        | O-ring (High Flow Motor)                       | 1    |

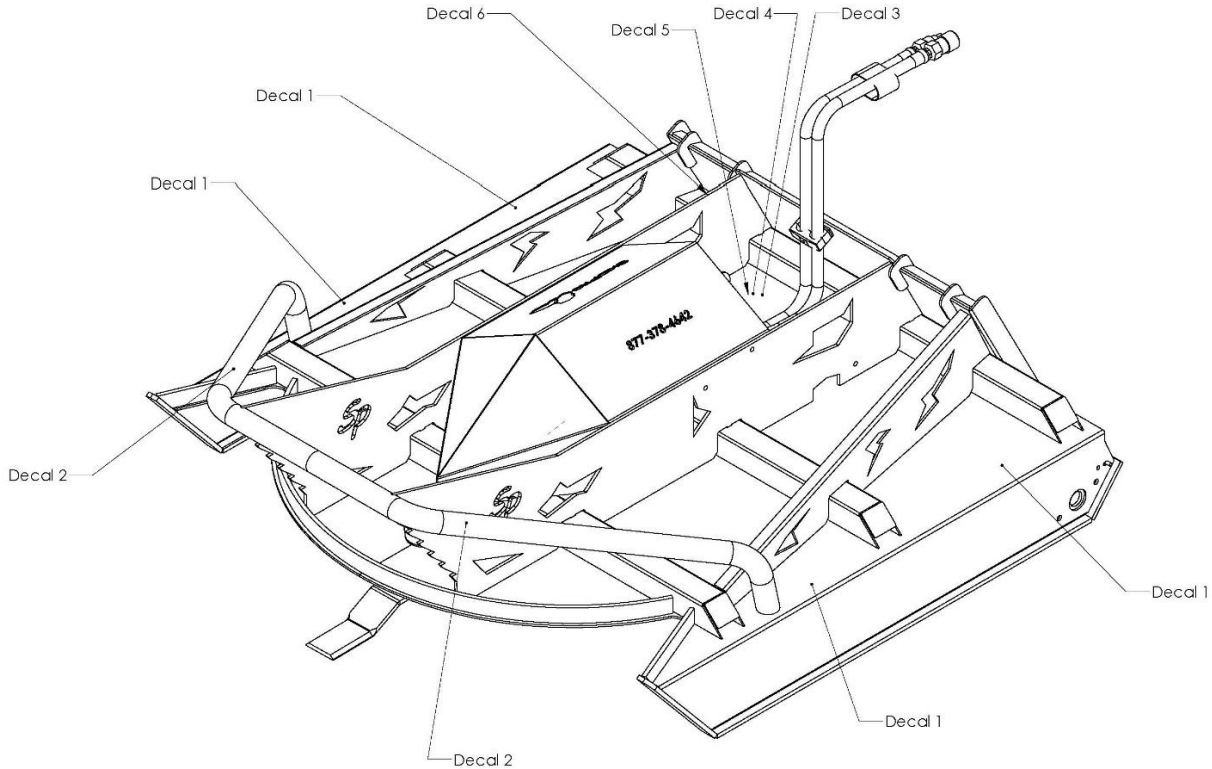
### Flywheel Assembly - Diagram C



### Flywheel Assembly - Parts List C

| ITEM NO. | PART NUMBER       | DESCRIPTION                     | QTY. |
|----------|-------------------|---------------------------------|------|
| 1        | 612-2-0025        | Mower Spindle Shaft             | 1    |
| 2        | 765-03-0017-WIDTH | 3 Blade FlyWheel WIDTH"         | 1    |
| 3        | 612-3-0013        | Blade                           | 3    |
| 4        | 612-3-0048        | BLADE BOLT                      | 3    |
| 5        | HW-1.25 LW        | 1 1/4" Lock Washer              | 3    |
| 6        | HW-.500-13X3 G8   | 1/2"-13 X 3" G8                 | 10   |
| 7        | HW-1.125-12 TLN   | 1 1/8" -12 Internal Locking Nut | 3    |
| 8        | HW-.500-13 RLN    | 1/2"-13 Reverse Lock Nut        | 10   |
| 9        | 612-3-0049        | Blade Bolt Spacer               | 3    |

## Warning Decal Placement – Diagram D



## Warning Decals - Parts List D

| ITEM # | PART NAME     | DESCRIPTION                                     | QTY. |
|--------|---------------|---|------|
| 1      | Warning Decal | Warning Keep Hands and Feet Away                | 4    |
| 2      | Warning Decal | DANGER Debris Discharge Area Stay Back 200 Feet | 2    |
| 3      | Warning Decal | Do Not Operate Without Safety Chain In Place    | 1    |
| 4      | Warning Decal | High Pressure Fluid Hazard                      | 1    |
| 5      | Warning Decal | Read Owner's Manual Before Operating            | 1    |
| 6      | DECAL-3-0141  | *See Model*                                     | 1    |

\*\*\*Image of Attachment may not be the model cutter you have, yet decal location is the same\*\*\*

## Warning Decal Graphics



Decal 1



Decal 2



Decal 3



Decal 4



Decal 5



Decal 6

# TORQUE SPECIFICATION TABLE

## General Specification Table

Use the following torques when special torques are not given. Note: These values apply to fasteners as received from supplier, when dry. These values do not apply if lubricants are used.

| <b>BOLT SIZES (SAE)</b> | <b>TORQUE</b>   |   |
|-------------------------|---|---|
| <b>INCHES</b>           | <b>POUNDS-FOOT<br/>(NC Threads)<br/>Grade 5 / Grade 8</b> | <b>POUNDS-FOOT<br/>(NF Threads)<br/>Grade 5 / Grade 8</b> |
| 1/4                     | 7/11  | 9/13  |
| 5/16                    | 15/22   | 17/24   |
| 3/8                     | 30/40   | 35/45   |
| 7/16                    | 45/65   | 50/70   |
| 1/2                     | 70/95   | 75/110  |
| 9/16                    | 100/140   | 110/155   |
| 5/8                     | 135/190   | 155/215   |
| 3/4                     | 240/340   | 270/380   |
| 7/8                     | 360/550   | 390/610   |
| 1                       | 530/820   | 590/890   |
| 1 1/8                   | 800/1440  | 880/1500  |
| 1 1/4                   | 1240/2000   | 1364/2200   |
| 1 3/8                   | 1680/2720   | 1848/2800   |
| 1 1/2                   | 2200/3500   | 2420/3600   |

| <b>BOLT SIZES (METRIC)</b> | <b>TORQUE</b>      |                      |
|----------------------------|--------------------|----------------------|
| <b>MILLIMETERS</b>         | <b>POUNDS-FOOT</b> | <b>NEWTONS-METER</b> |
| M6                         | 10                 | 13                   |
| M8                         | 22                 | 30                   |
| M10                        | 40                 | 54                   |
| M12                        | 59                 | 80                   |
| M14                        | 93                 | 126                  |
| M16                        | 130                | 176                  |
| M18                        | 168                | 228                  |
| M20                        | 205                | 278                  |