



**CP12LF
CP16LF
LOW FLOW COLD PLANER**

MANUAL

- Operation
- Maintenance
- Service
- Parts
- Warranty

Serial number _____

Date released for shipment _____

PUBLICATION DATE: 11/02/21

INTRODUCTION

Thank you for your investment in SkidPro. We are confident that you will find that your SkidPro attachment is the easiest to operate, safest, most durable, and most efficient at-tachment on the market.

Your SkidPro is equipped with high performance, heavy duty components. To ensure that these components operate properly and effectively, this manual must be followed. If any question regarding the operation or performance of this attachment exists, contact your SkidPro Guru at once.

This manual contains safety instructions, guidelines for efficient operation, troubleshooting tips, and service maintenance procedures. When applicable, the terms “right” and “left” are referenced from a sitting position and facing forward in the loader.

Throughout this manual, information is provided in boxes and highlighted by the word **IMPORTANT**. This information should be read carefully. If complied with, it will improve the operating efficiency of the unit and provide directives that will minimize costly breakdowns and extend the life of the machine.



This warning symbol appears throughout this manual and indicates that a safety hazard may exist if the information given is not properly followed. When the warning signal is encountered in the manual or on the unit, Be Alert! Your personal safety is involved!

For more copies of this manual or the necessary safety decals, contact your SkidPro Guru.

TABLE OF CONTENTS

	Page
SAFETY DECALS	4
SAFETY PRECAUTIONS	5
MANDATORY SAFETY SHUTDOWN PROCEDURE	5
SAFETY	6
SETUP	7
OPERATION	8
MAINTENANCE.....	9
SERVICE.....	10-11
CHASSIS GROUP PARTS DRAWING.....	12-15
ATTACH GROUP PARTS DRAWING.....	16-17
DRIVETRAIN AND DRUM PARTS DRAWING.....	18-19
HYDRAULIC GROUP PARTS DRAWING.....	20-21
DECAL GROUP PARTS DRAWING.....	22-23
HYDRAULIC SCHEMATIC.....	24
SPECIFICATIONS	25
WARRANTY	26
NEW MACHINE DELIVERY REPORT.....	27
OWNER INFORMATION CARD.....	28

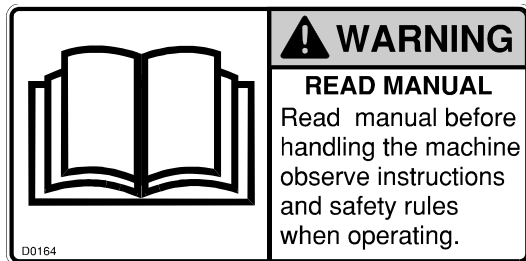
SAFETY DECALS

The safety decals existing on the attachment should be clearly readable and always followed. The location and description of the decals is shown in the parts diagram.

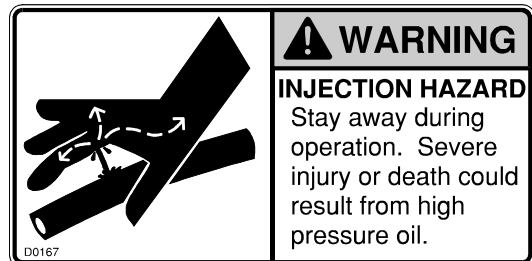
The FLYING OBJECTS decal warns the operator the operator and bystanders to stay away during operation.



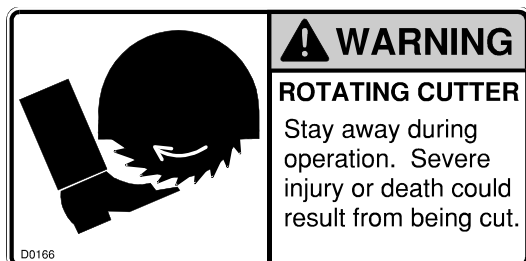
The READ MANUAL decal warns the operator to read this manual before operating the attachment.



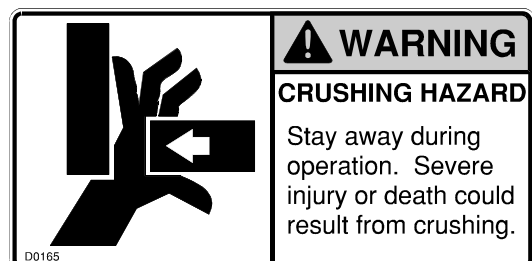
The INJECTION HAZARD decal warns the operator and bystanders to stay away during operation.



The ROTATING CUTTER decal warns the operator and bystanders to stay away during operation.



The CRUSHING HAZARD decal warns the operator and bystanders to stay away during operation.



SAFETY PRECAUTIONS

ACCIDENTS ARE PREVENTABLE WITH YOUR HELP

Understand and comply with applicable laws and regulations.

- Call local utilities before you dig.
- Know the location of underground gas, water and electrical lines.
- Inspect area for holes, drop-offs, or unstable ground.
- Know the weight limitations of operating surfaces and clearances.
- Remember: Safe operation begins with the operator.



WARNING

BEFORE OPERATING THIS EQUIPMENT, THE FOLLOWING SAFETY INFORMATION SHOULD BE READ AND UNDERSTOOD. IN ADDITION, EACH INDIVIDUAL WORKING WITH THE EQUIPMENT SHOULD BE FAMILIAR WITH THE SAFETY PRECAUTIONS

Exercise extreme caution when hitching and removing the attachment, operating with other workers present, and servicing the unit.

SkidPro makes operator safety a priority when designing machinery. Exposed moving parts are guarded whenever possible for safety. However, not all moving parts can be shielded in order to ensure proper operation. This operator's manual and safety decals on the machine provide important safety information when observed closely. If safety decals become difficult to read, replace them immediately. (see "Safety Decals").

MANDATORY SAFETY SHUTDOWN PROCEDURE

BEFORE cleaning, adjusting, lubricating, or servicing this unit, **ALWAYS** follow the **MANDATORY SAFETY SHUTDOWN PROCEDURE**:

1. Move the skid steer loader propulsion control levers to the "neutral" position.
2. Move the loader throttle to the slow idle position. Shut off the attachment by shutting off the auxiliary and high flow hydraulic output.
3. Lower the loader lift arms completely roll the attachment forward so it is securely resting on firm ground or the shop floor.
4. Engage the loader park brake.
5. Shut the engine off, and remove the ignition key.
6. Keep the key with you at all times when working on the unit so no one can start the engine without your knowledge.



WARNING

FAILURE TO FOLLOW THE PROCEDURES BEFORE CLEANING, ADJUSTING, LUBRICATING, OR SERVICING THIS UNIT COULD LEAD TO SERIOUS INJURY OR DEATH.

SAFETY

A careful operator is the best protection against accidents. Most accidents involving operators of industrial equipment are caused by failure to observe basic safety precautions. Know the equipment and worksite before you operate. Familiarize yourself with the safety precautions listed below.

5. **BE SURE** to raise the attachment totally off the ground **BEFORE** side shifting.
6. **CAREFULLY** inspect ALL hydraulic hoses and connections on a routine basis; Always use a piece of cardboard when searching for leaks.
7. **BE SURE** to exercise the above **MANDATORY SAFETY SHUTDOWN** procedure, **BEFORE** proceeding with any work on the attachment.

WARNING

THE FOLLOWING PRECAUTIONS MUST BE OBSERVED FOR THE SAFETY OF THE OPERATOR AND/OR SERVICE PERSONNEL.

1. Read and observe all safety information and decals on the skid steer loader and attachment **BEFORE** operating the unit!
2. Refer to the **SAFETY** section of your skid loaders operator's manual and observe all safety recommendations set forth in the manual.
3. When loading, keep attachment as low to ramps & trailer as possible.
4. Always lower the loader arms fully before leaving the skid steer seat.

WARNING

NEVER CRAWL UNDER RAISED LOADER ARMS.

WARNING

NEVER USE YOUR HANDS AS ESCAPING FLUID UNDER PRESSURE CAN PENETRATE THE SKIN CAUSING SERIOUS INJURY. IF HYDRAULIC FLUID DOES PENETRATE THE SKIN, SEEK IMMEDIATE MEDICAL ATTENTION BY A DOCTOR FAMILIAR WITH THIS TYPE OF INJURY OR GANGRENE MAY RESULT.

WARNING

NEVER ALLOW HANDS OR FEET NEAR ANY WORKING PART OF THE ATTACHMENT UNLESS THE MANDATORY SAFETY SHUTDOWN PROCEDURE HAS BEEN COMPLETED.

SETUP



WARNING

READ THIS ENTIRE MANUAL AS WELL AS THE DECALS ON THE ATTACHMENT BEFORE ATTEMPTING ANY MAINTENANCE, SERVICE OR SETUP OF THE UNIT.

Although the SkidPro is supplied fully assembled, some simple checks should be performed before operation begins.

Safety Decals

The safety decals existing on the attachment should be clearly readable and always followed. The locations and descriptions of the decals are shown in the “**Safety Decals**” section.

Hydraulic Couplers

The planer has been shipped **without** the 2 required hydraulic quick couplers. Obtain correct brand and size and install them on the hoses.

The CP12LF and CP16LF are Low Flow Cold Planers which operates on the auxiliary flow of the skid loader. Since the auxiliary flow is reversible, be sure to operate the unit so the drum is spinning in the correct direction. The drum should spin in the direction the teeth are pointing.

Hoses / Fittings

Hydraulic fittings are used to connect all attachment hoses. All fittings should be tight and free of hydraulic leaks. Hoses must be free of crimps or cuts that might result in leakage. Check your attachment before operation to make sure all hose routings are kink-free and allow for maximum movement of all extend, lift/lower, and/or swing motion required during normal operation.

Drum Assembly

For proper operation, picks must be installed in every holder on the drum.

OPERATION

The cold planer is a hydraulically powered attachment intended for cutting asphalt or concrete surfaces. The performance of the attachment can vary greatly depending upon how it is used and operated. Therefore, the recommended operating procedures contained within this manual should be followed at all times for maximum productivity.

Prior to operating the attachment, read this entire manual. Follow all safety guidelines in this manual and safety decals on the unit. Make sure that all guards, shields, and decals are in place and in good condition prior to operation.

See page 23 for minimum flow requirements for this model.

IMPORTANT

Insufficient hydraulic power will result in poor performance. Check auxiliary high flow per factory specifications

Attaching to Loader

To attach the unit to the loader, start the loader engine and rotate the coupler out. Pull both coupler levers up to the vertical position. Move the machine forward and pick up the attachment. Rotate the attachment back and push both coupler levers completely down. Make sure the two wedges are completely down and engaged. Be sure pins and latch handles are secure before operating boom and bucket. Always refer to operating instructions in the skidsteer manual.

In attaching the unit to the skid steer, ensure that all hydraulic hoses are coupled securely to the quick couplers. Two hoses are to be connected, pressure & return.

IMPORTANT

All hoses should be free of kinks, cuts, or abrasions for safe operation. Do not operate if any hose are worn or damaged.

To Operate

1. Enter skid steer and fasten seat belt.
2. Make sure the area is clear of bystanders and other workers.
3. Start the skid steer and engage the low flow hydraulic circuit at idle.
4. Adjust the planers tilt & depth using the manual jacks with the hand screw . Sideshift as needed using the manual diverter valve located on the sideshift frame.
5. Move the throttle to the full rpm position. and keep it there during the milling operations. Lower the drum into the cut. Move forward at a speed that will allow the drum to efficiently without stalling.

NOTE. Milling speed will depend on tooth condition, age and density of the material, aggregate size and ambient temperature.

MAINTENANCE

Proper maintenance of the attachment will result in longer life and the more productive and cost effective operation. There are two basic categories of maintenance required, pick/holder replacement and component lubrication. For proper operation, the picks should be checked each four (4) hours and lubricated daily to ensure that they can freely rotate in their holders.



WARNING

BEFORE PERFORMING ANY MAINTENANCE ON THE UNIT, PERFORM THE MANDATORY SAFETY SHUTDOWN PROCEDURE.

Pick/Holder Replacement

As regular use takes place, normal wear of the carbide picks will occur with the outer most picks wearing first. The pick tool included with the cold planer should be used to remove the picks from the cast holders. In the event the pick tool is not available, any hardened punch or tool allowing access to the bottom of the holders can be used.

IMPORTANT

Welder must be grounded directly to drum during pick holder replacement or SEVERE BEARING DAMAGE WILL RESULT.

A length of pipe with a 25mm inside diameter can be placed over the pick to protect it from a direct hit. Striking a small piece of wood placed on the pick to absorb the shock will prevent damage.



WARNING

NEVER DRIVE THE PICK BY STRIKING DIRECTLY ON THE END OF THE PICK AS THIS CAN CAUSE THE PICK TO CHIP AND CAUSE INJURY OR CREATE SMALL STRESS FRACTURES IN THE PICK RESULTING IN PREMATURE WEAR.



WARNING

ALWAYS WEAR SAFETY GLASSES WHEN PERFORMING THIS OPERATION. HARDENED TOOLS AND PICKS CAN SHATTER CAUSING INJURY.

The factory installed carbide pick chosen for use is a general purpose pick as the cold planer is designed for both asphalt and concrete applications. Picks designed for extended periods of concrete cutting are available from the factory or your dealer.

To prevent the picks from seizing in the holders, the picks should be sprayed with a lubricate at the end of each day. This will break down the asphalt build up in the holders and prevent premature wear by allowing the picks to rotate in the holders. Excess lubricant should be caught in a collection pan and properly disposed of.

If the pick remains in the holder beyond its intended replacement point, it reduces the cutting performance and will not protect the holder. Inspect the cutting drum every hour of operation. Check the picks and holders for wear. If the picks are worn enough to indicate slight holder wear, replace the picks.

SERVICE

WARNING

BEFORE SERVICING THIS UNIT, THE MANDATORY SAFETY SHUTDOWN PROCEDURE MUST BE COMPLETED. SEE "SAFETY" SECTION.

Lubrication

On the CP31.13 and CP41.13 cold planer there are 5 grease points.

1. On the rear of the unit; two grease zerks on the two side shift tubes.
2. On the non motor side of the unit; a bearing with a grease zerk.
3. Two grease zerks are on the depth jack & tilt screw jack.
4. These 5 grease points should be greased each day.

For pick maintenance, consult the maintenance section on page 9.

WARNING

EXERCISE EXTREME CAUTION DURING THIS OPERATION TO PREVENT TIPPING OF THE UNIT.

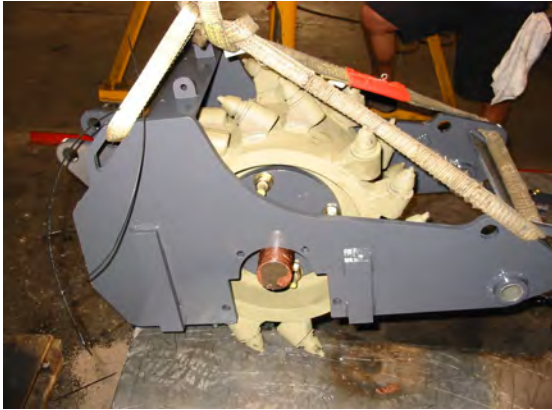
Drum Removal

1. Perform mandatory shutdown procedure with the cold planer adjusted to the maximum depth. Ensure that planer drum is sitting on a stable surface and is chocked to prevent movement.
2. Disconnect the two hydraulic lines connected to the motor.



3. Remove the four 1/2" motor bolts that fasten the motor to the unit.
4. Remove the four 1/2" bolts that fasten the bearing to the housing.





5. Lift cold planer chassis off of drum using a hoist.
6. Reverse steps for reassembly.

Drive Motor Removal

1. Remove the drum from the planer chassis.



2. Remove (4) deadshaft nuts from the right side of the drum and remove the



3. Remove the (4) nuts from the left side of the drum and remove the motor assy.



4. Remove the cotter pin and nut on the motor shaft and remove the hub.
5. Reverse steps for reassembly.

! WARNING

IF THE DRUM DOES NOT REMAIN ON THE FLOOR, LOWER THE PLANER, SHUT THE ENGINE OFF, REMOVE THE IGNITION KEY AND REVIEW STEPS 1 THRU 5. DO NOT ATTEMPT TO DISLodge THE DRUM WHILE THE PLANER FRAME IS IN THE RAISED POSITION. NEVER PLACE HANDS OR ANY PART OF YOUR BODY IN, AROUND, OR UNDER THE DRUM, AS IT MAY FALL CAUSING SERIOUS INJURY.

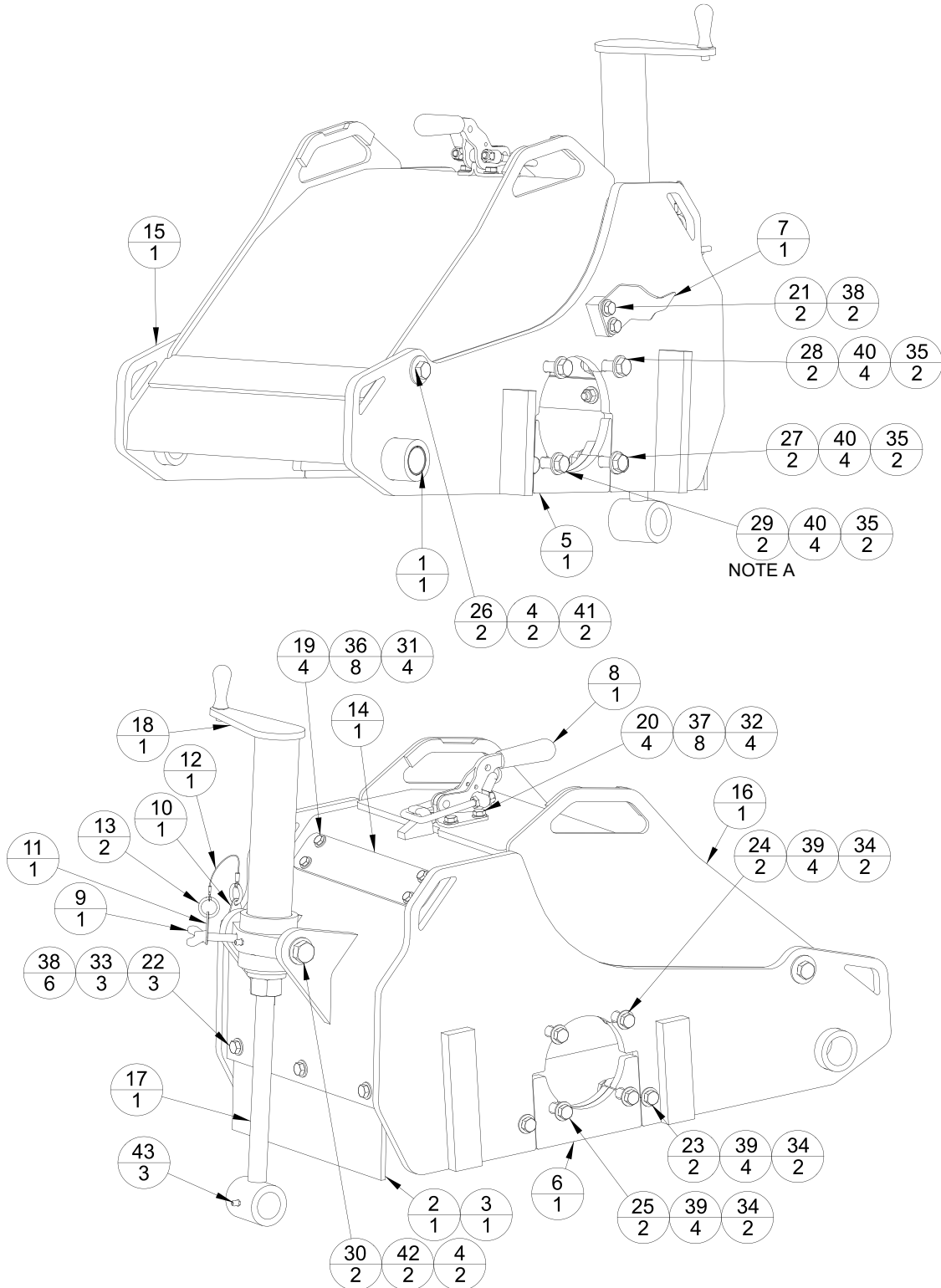
! WARNING

COMPONANTS ARE EXTREMELY HEAVY AND CAN CAUSE SERIOUS INJURY IF PROPER LIFTING TECHNIQUES ARE NOT USED.

CHASSIS GROUP (CHASSIS PARTS)

CP12LF and CP16LF

Cold Planer



NOTE A

CHASSIS GROUP (CHASSIS PARTS)

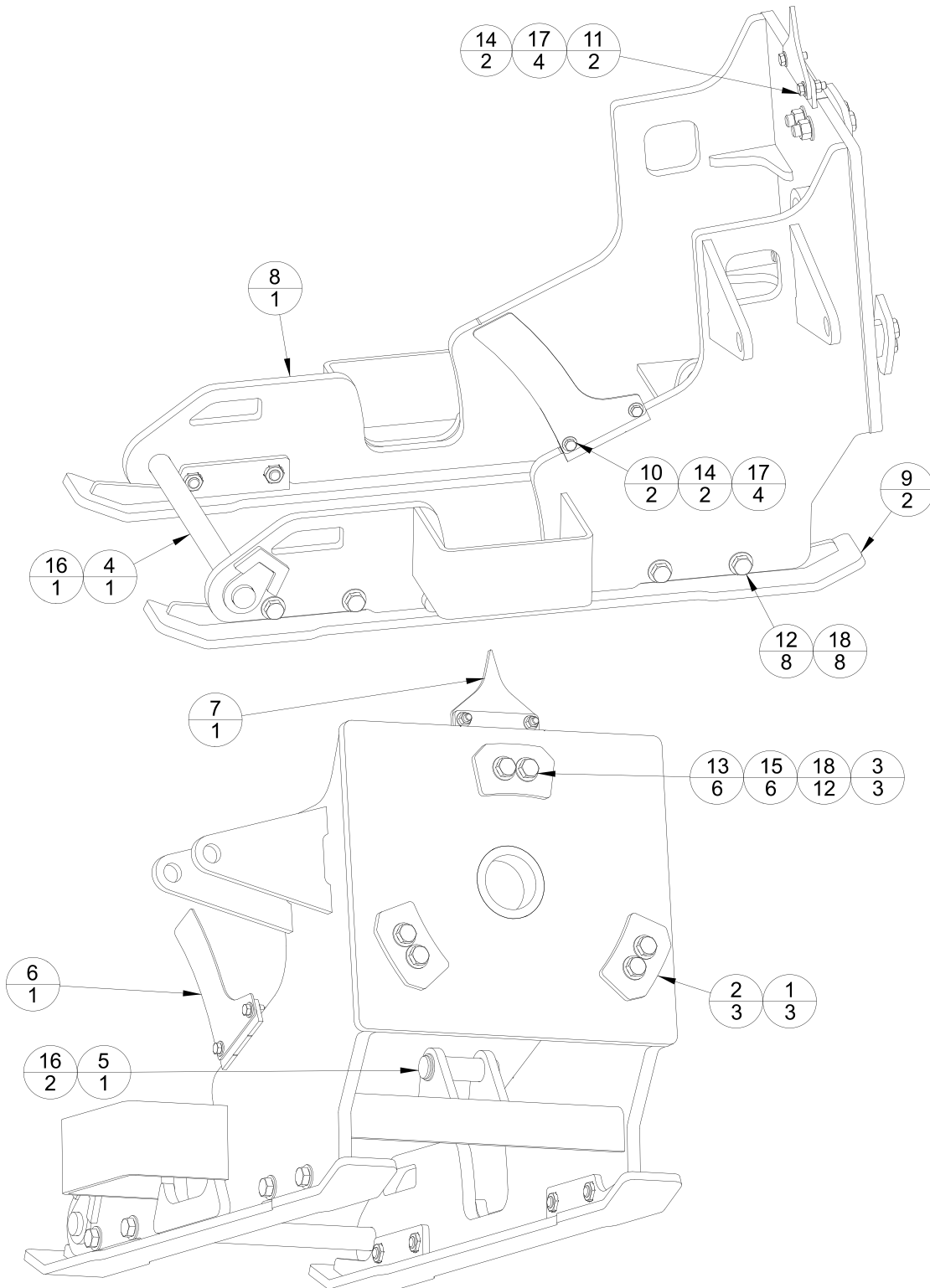
CP12LF and CP16LF

Cold Planer

ITEM	QTY	CP12LF PART NO.	CP16LF PART NO.	DESCRIPTION
1	1	106-0585	106-0585	BEARING, DU 1.25 PIN X 1.25 WIDTH
2	1	106-0771	106-1641	BELTING, RUBBER
3	1	106-0772	106-1642	PLATE, BELTING RETAINER
4	4	106-0773	106-0773	BUSHING, SHROUD BOLT
5	1	106-0774	106-0774	WELDMENT, CHASSIS GUSSET
6	1	106-0777	106-0777	WELDMENT, CHASSIS GUSSET
7	1	106-0792	106-0792	PLATE, DEPTH INDICATOR
8	1	106-2501	106-2501	LATCH ASSEMBLY, DRAW
9	1	106-3676	106-3676	SCREW, WING 3/8-16 X 2
10	1	106-3677	106-3677	PLATE, CABLE RETAINER
11	1	106-3678	106-3678	PLATE, CABLE RETAINER
12	1	106-3679	106-3679	CABLE, SHROUD RETAINER PIN
13	2	106-3680	106-3680	RING, SPLIT
14	1	106-3835	106-3836	PLATE, WATER SPRAY BAR COVER
15	1	106-5080	106-5081	WELDMENT, CHASSIS
16	1	106-5084	106-5085	CHASSIS SHROUD WELDMENT
17	1	106-5094	106-5094	WELDMENT, JACK MALE
18	1	106-5093	106-5093	WELDMENT, JACK FEMALE
19	4	HB025L0100A	HB025L0100A	BOLT, 1/4-20 X 1.00 PLATED
20	4	HB031L0100A	HB031L0100A	BOLT, 5/16-18 X 1.00 PLATED
21	2	HB038L0075A	HB038L0075A	BOLT, 3/8-16 X 0.75 PLATED
22	3	HB038L0150A	HB038L0150A	BOLT, 3/8-16 X 1.50 PLATED
23	2	HB044L0175A	HB044L0175A	BOLT, 7/16-14 x 1.75 PLATED
24	2	HB044L0200A	HB044L0200A	BOLT, 7/16-14 X 2.00 PLATED
25	2	HB044L0250A	HB044L0250A	BOLT, 7/16-14 X 2.50 PLATED
26	2	HB050L0175A	HB050L0175A	BOLT, 1/2-13 x 1.75 PLATED
27	2	HB050L0200A	HB050L0200A	BOLT, 1/2-13 X 2.00 PLATED
28	2	HB050L0225A	HB050L0225A	BOLT, 1/2-13 X 2.25 PLATED
29	2	HB050L0275A (NOTE A)	HB050L0275A (NOTE A)	BOLT, 1/2-13 X 2.75 PLATED
30	2	HB063L0175A	HB063L0175A	BOLT, 5/8-11 X 1.75 PLATED
31	4	HN025A	HN025A	NUT, 1/4-20 PLATED
32	4	HN031A	HN031A	NUT, 5/16-18 PLATED
33	3	HN038A	HN038A	NUT, 3/8-16 PLATED
34	6	HN044A	HN044A	NUT, 7/16-14 PLATED
35	6	HN050A	HN050A	NUT, 1/2-13 PLATED
36	8	HW025NA	HW025NA	WASHER, 1/4 NARROW PLATED
37	8	HW031NA	HW031NA	WASHER, 5/16 NARROW PLATED
38	8	HW038NA	HW038NA	WASHER, 3/8 NARROW PLATED
39	12	HW044NA	HW044NA	WASHER, 7/16 NARROW PLATED
40	12	HW050NA	HW050NA	WASHER, 1/2 NARROW PLATED
41	2	HW050WA	HW050WA	WASHER, 1/2 WIDE PLATED
42	2	HW063NA	HW063NA	WASHER, 5/8 NARROW PLATED
43	3	HZ001	HZ001	ZERK, 1/4-28 STRAIGHT

NOTE A: FOR PLANERS BUILT AFTER APRIL 2020, BOLT WAS CHANGED TO
 HSHB050L0300A BOLT, SOCKET HEAD 1/2-13X3.00 PLATED

CHASSIS GROUP (DEPTH SKID PARTS) CP12LF and CP16LF Cold Planer



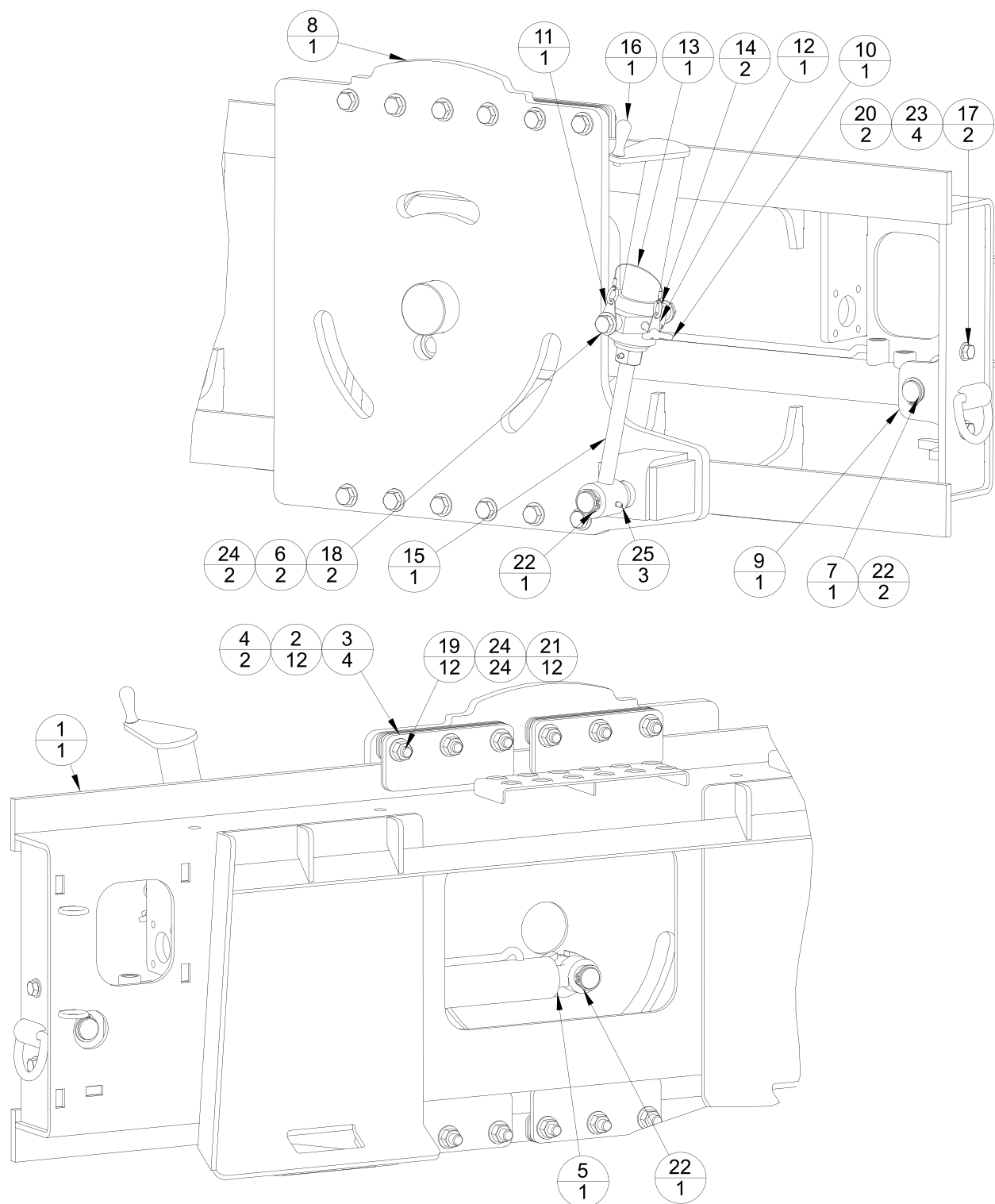
CHASSIS GROUP (DEPTH SKID PARTS)

CP12LF and CP16LF

Cold Planer

ITEM	QTY	CP12LF PART NO.	CP16LF PART NO.	DESCRIPTION
1	3	106-0534	106-0534	PLATE, PIVOT SPACER
2	3	106-0535	106-0535	PLATE, PIVOT RETAINER
3	3	106-0606	106-0606	PLATE, PIVOT SPACER
4	1	106-0769	106-1635	WELDMENT, CHASSIS PIN
5	1	106-0790	106-0790	PIN, SIDE SHIFT/LF JACK
6	1	106-0791	106-0791	PLATE, DEPTH DECAL
7	1	106-0814	106-0814	PLATE, TILT INDICATOR
8	1	106-5075	106-5076	WELDMENT, DEPTH SKID
9	2	106-5090	106-5090	WELDMENT, WEAR SKID
10	2	HB038L0100A	HB038L0100A	BOLT, 3/8-16 X 1.00 PLATED
11	2	HB038L0125A	HB038L0125A	BOLT, 3/8-16 X 1.25 PLATED
12	8	HB063L0150A	HB063L0150A	BOLT, 5/8-11 X 1.50 PLATED
13	6	HB063L0300A	HB063L0300A	BOLT, 5/8-11 X 3.00 PLATED
14	4	HN038A	HN038A	NUT, 3/8-16 PLATED
15	6	HN063A	HN063A	NUT, 5/8-11 PLATED
16	3	HRRE125A	HRRE125A	RETAINING RING, EXTERNAL 1.25" DIA.
17	8	HW038NA	HW038NA	WASHER, 3/8 NARROW PLATED
18	20	HW063NA	HW063NA	WASHER, 5/8 NARROW PLATED

ATTACH GROUP **CP12LF and CP16LF**



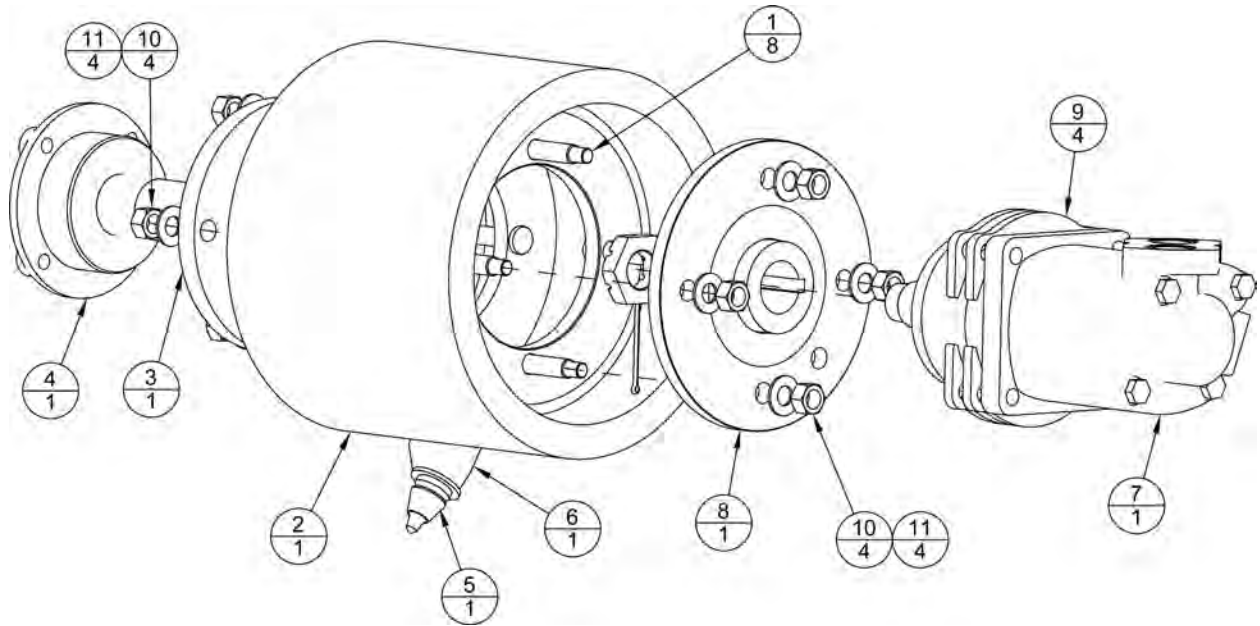
ATTACH GROUP

CP12LF and CP16LF

Cold Planer

ITEM	QTY	CP12LF PART NO.	CP16LF PART NO.	DESCRIPTION
1	1	106-0522	106-0522	WELDMENT, ATTACH
2	12	106-0532	106-0532	PLATE, SIDE SHIFT SPACER
3	4	106-0533	106-0533	PLATE, SIDE SHIFT RETAINER
4	2	106-0589	106-0589	PLATE, SIDE SHIFT SPACER (PLASTIC)
5	1	106-0657	106-0657	CYLINDER, SIDESHIFT (SEAL KIT:SO-0013)
6	2	106-0773	106-0773	BUSHING, SHROUD BOLT
7	1	106-0790	106-1626	PIN, SIDE SHIFT / LF JACK
8	1	106-0808	106-0808	WELDMENT, SIDESHIFT
9	1	106-0813	106-0813	PLATE, CYLINDER BRACKET
10	1	106-3676	106-3676	SCREW, WING 3/8-16 X 2
11	1	106-3677	106-3677	PLATE, CABLE RETAINER
12	1	106-3678	106-3678	PLATE, CABLE RETAINER
13	1	106-3679	106-3679	CABLE, SHROUD RETAINER PIN
14	2	106-3680	106-3680	RING, SPLIT
15	1	106-5094	106-5094	WELDMENT, JACK MALE
16	1	106-5093	106-5093	WELDMENT, JACK FEMALE
17	2	HB050L0175A	HB050L0175A	BOLT, 1/2-13 x 1.75 PLATED
18	2	HB063L0175A	HB063L0175A	BOLT, 5/8-11 X 1.75 PLATED
19	12	HB063L0300A	HB063L0300A	BOLT, 5/8-11 X 3.00 PLATED
20	2	HN050A	HN050A	NUT, 1/2-13 PLATED
21	12	HN063A	HN063A	NUT, 5/8-11 PLATED
22	4	HRRE125A	HRRE125A	RETAINING RING, EXTERNAL 1.25" DIA.
23	4	HW050NA	HW050NA	WASHER, 1/2 NARROW PLATED
24	26	HW063NA	HW063NA	WASHER, 5/8 NARROW PLATED
25	3	HZ001	HZ001	ZERK, 1/4-28 STRAIGHT

DRIVETRAIN and DRUM GROUP
CP12LF and CP16LF
Cold Planer



DRIVETRAIN and DRUM GROUP

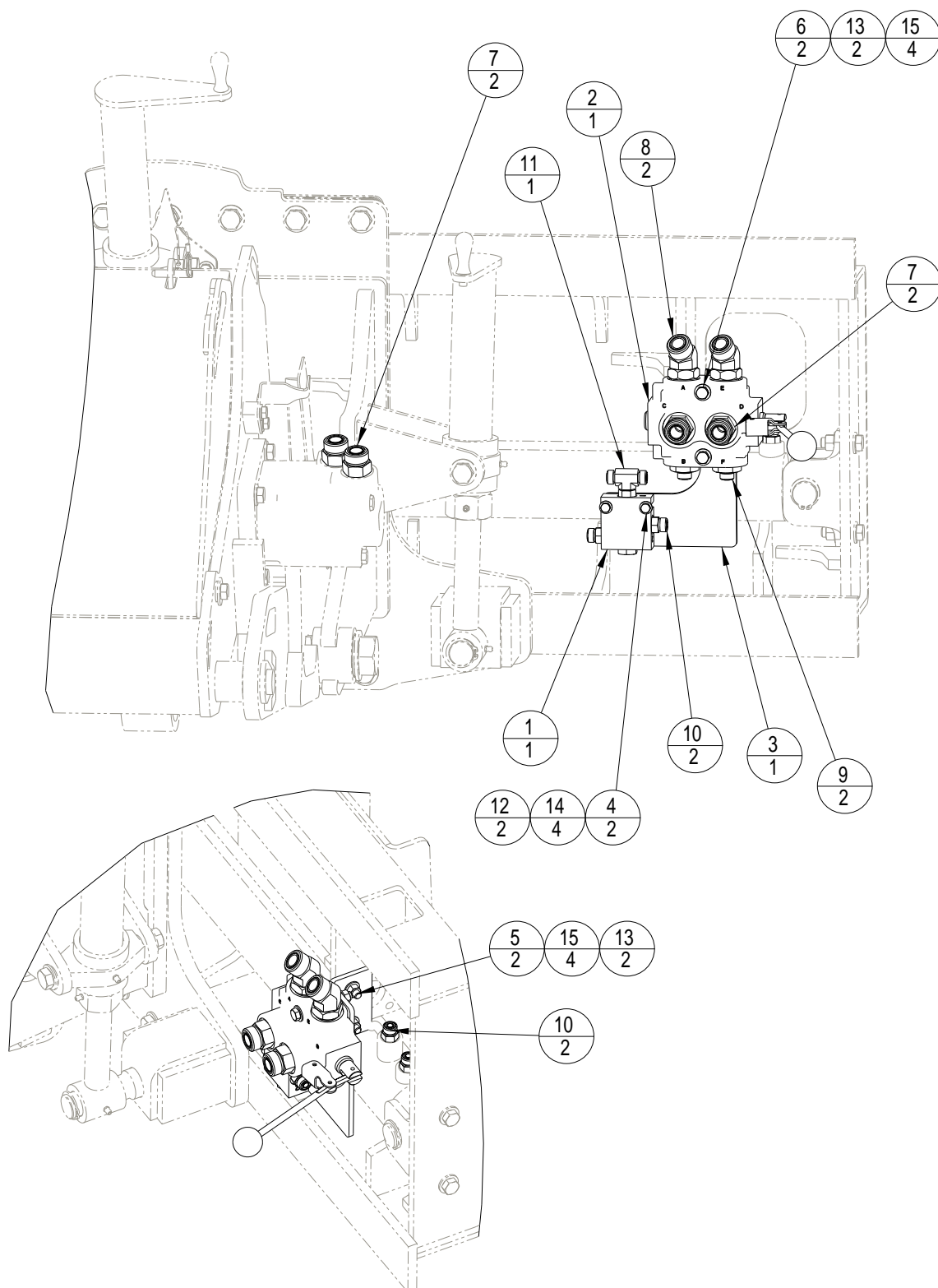
CP12LF and CP16LF

Cold Planer

		CP12LF	CP16LF	DESCRIPTION
ITEM	QTY	PART NO.	PART NO.	
1	8	106-0669	106-0669	BOLT, 5/8-11 X 2.25 RND HD, RBD NECK
2	1	106-0795	106-1637	ASSEMBLY, DRUM WITH PICKS & STUDS
3	1	106-3018	106-3018	WELDMENT, DEAD SHAFT
4	1	106-0803	106-0803	BEARING, DEAD SHAFT
5	1	106-0831	106-0831	PICK, ASPHALT
6	1	106-0927	106-0927	HOLDER, PICK
7	1	106-6194	106-6194	MOTOR, DRUM DRIVE (SEAL KIT: S0-0548)
8	1	106-6689	106-6689	WELDMENT, MACHINED MOTOR HUB
9	4	106-6690	106-6690	PLATE, MOTOR SPACER CPLF
10	8	HN063A	HN063A	NUT, 5/8-11 PLATED
11	8	HW063NA	HW063NA	WASHER, 5/8 NARROW PLATED

NOTE A: QUANTITY VARIES
 CP12LF: 30
 CP16LF: 38

HYDRAULIC GROUP CP12LF and CP16LF COLD PLANER



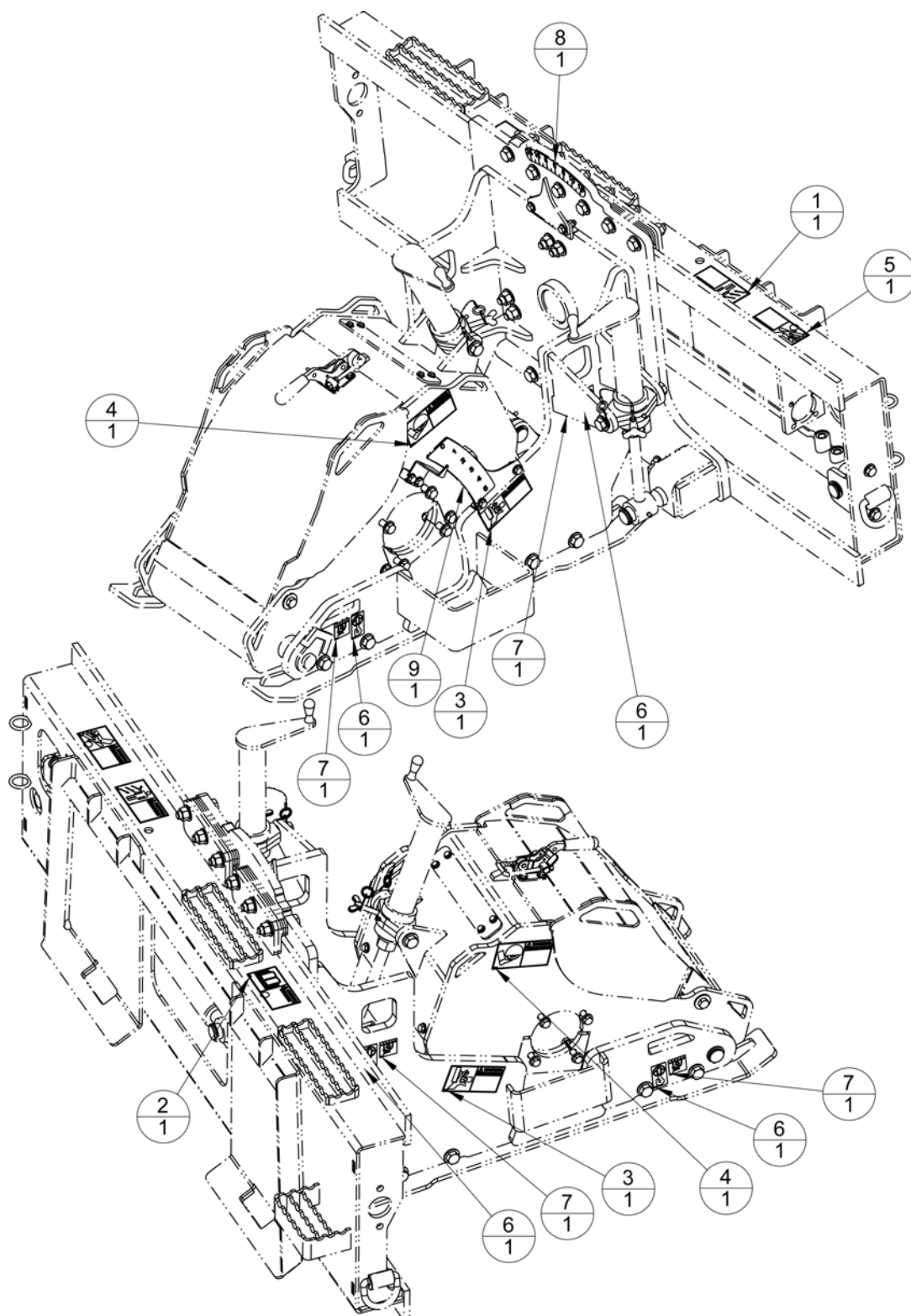
HYDRAULIC GROUP

CP12LF and CP16LF

Cold Planer

ITEM	QTY	PART NO.	DESCRIPTION
1	1	106-0575	ASSEMBLY, CHECK VALVE
2	1	106-0828	ASSEMBLY, DIVERTER VALVE
3	1	106-1274	PLATE, VALVE MOUNT
4	2	HB025L0200A	BOLT, 1/4-20 x 2.00 PLATED
5	2	HB038L0150A	BOLT, 3/8-16 X 1.50 PLATED
6	2	HB038L0300A	BOLT, 3/8-16 X 3.00 PLATED
7	4	HF12V5OLO	FITTING, ELBOW 12 ORFS 12 STOR 45 DEG.
8	2	HF12F5OLO	FITTING, STRAIGHT 12 ORFS 12 ST OR
9	2	HF6-12F5OLO	FITTING, STRAIGHT 6 ORFS 12 ST OR
10	1	HF6S5OLO	FITTING, TEE -6 STOR -6 ORFS -6 ORFS
11	2	HF6F5OLO	FITTING, STRAIGHT 6ORFS 6SAE-ORB
12	2	HN025A	NUT, 1/4-20 PLATED
13	4	HN038A	NUT, 3/8-16 PLATED
14	4	HW025NA	WASHER, 1/4 NARROW PLATED
15	8	HW038NA	WASHER, 3/8 NARROW PLATED

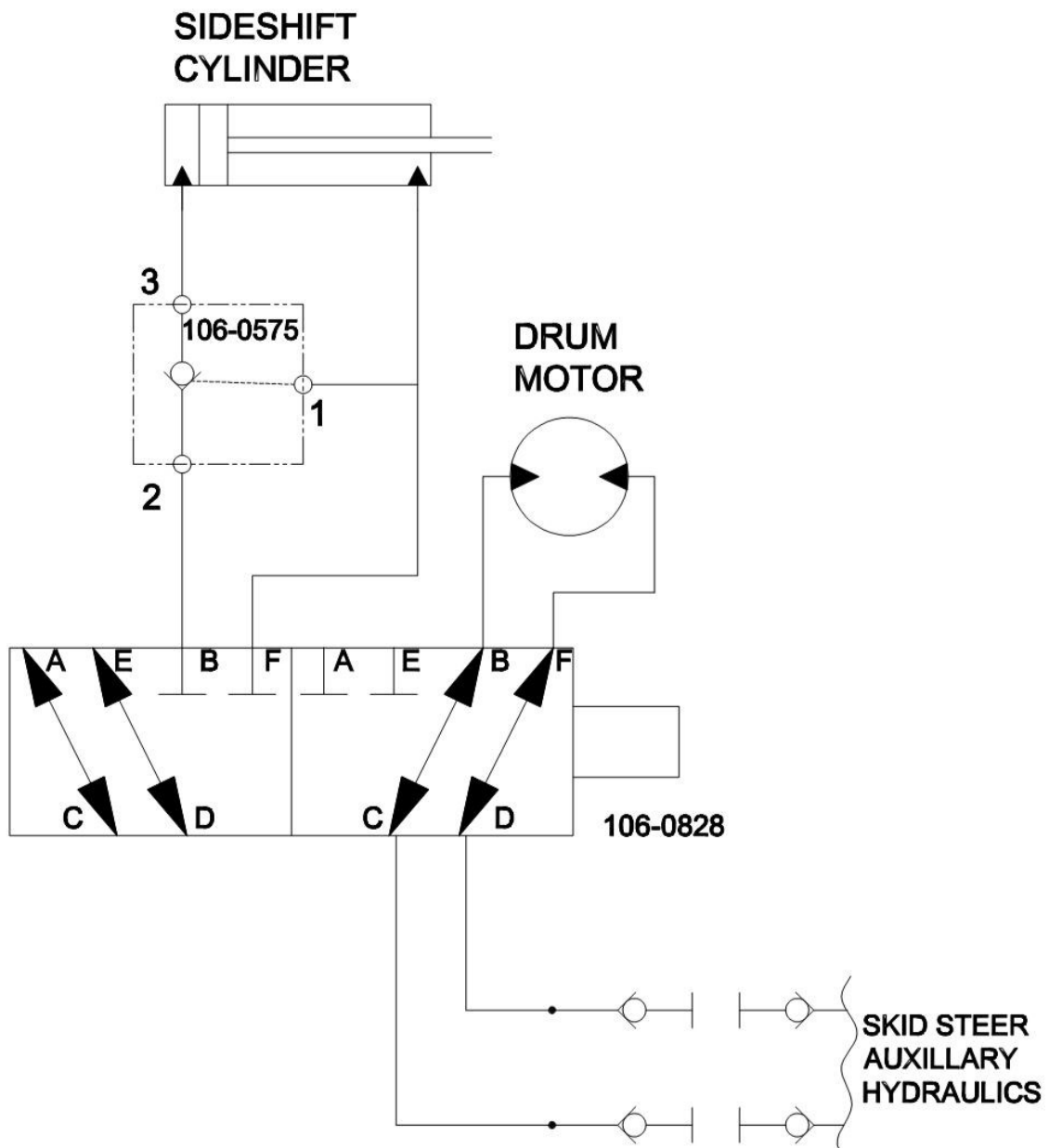
DECAL GROUP **CP12LF and CP16LF**



DECAL GROUP **CP12LF and CP16LF** **Cold Planer**

<i>ITEM</i>	<i>QTY</i>	<i>PART NO.</i>	<i>DESCRIPTION</i>
1	1	D0163	DECAL, FLYING OBJECTS
2	1	D0164	DECAL, READ MANUAL
3	2	D0165	DECAL, CRUSHING HAZARD
4	2	D0166	DECAL, ROTATING CUTTER
5	1	D0167	DECAL, INJECTION HAZARD
6	4	D0168	DECAL, LIFT POINT
7	4	D0169	DECAL, TIE DOWN
8	1	D0178	DECAL, TILT INDICATOR
9	1	D0182	DECAL - LOW FLOW DEPTH

HYDRAULIC SCHEMATIC CP12LF and CP16LF



SPECIFICATIONS

CP12LF

CP16LF

Cutting Width	12 inches	16 inches
Cutting Depth	0 to 5 inches	0 to 5 inches
Number of Teeth	30	38
Min. Hydraulic Flow	15 gpm.	15 gpm.
Max. Hydraulic Flow	25 gpm.	25 gpm.
Minimum Pressure	1500 psi	1500 psi
Maximum Pressure	3500 psi	3500 psi
Tilt Capability	+/-15 degrees	+/- 15 degrees
Side shift Travel	26 inches	26 inches
Weight	1350 lbs.	1450 lbs.



PO Box 982, 807 McKay Ave S.
Alexandria, MN 56308
Toll Free: 877-378-4642
www.skidpro.com

SKID PRO WARRANTY

Skid Pro warrants above attachments for twelve months from date of shipment to the original owner. Warranty covers products to be free from defects in material and workmanship when properly set up and operated in accordance with Skid Pro's recommendations.

WARRANTY CLAIM PROCEDURE

All warranty claims must be submitted within the manufacturer's limited warranty period. Pictures and/or a video as well as a detailed description of the events leading up to the failed component(s) are required to properly document all potential warranty claims. To submit a warranty claim, contact your Skid Pro Product Guru or complete a [Warranty Claim Form](#) on our website and send it along with supporting pictures/video to sales@skidpro.com. A valid credit card is required to be on file with Skid Pro to begin processing a warranty claim. No warranty claim will be processed without a valid credit card on file. Upon receipt, the warranty claim information will be reviewed and once determined to be a valid claim, a return authorization number will be issued for the return of the defective part(s) if applicable and replacement part(s) will be shipped. If it is determined the defective parts are to be returned and they are not received by Skid Pro within 30 days of receiving the replacement parts, the buyer's credit card on file will be charged for the cost of the replacement parts plus any shipping charges. Tampering with the failed part (i.e. disassembling a motor or cylinder) will void the warranty.

EXCLUSIONS OF WARRANTY

Skid Pro's requirement for any issue with respect to attachments shall be limited to repairing or replacing the defective part, as this is a parts-only warranty and does not include labor to replace or install the part, interest accrued or payments made for financing, or downtime from resulting issue. Skid Pro has full technical support to assure customer replaces the part properly.

This warranty shall not apply to any attachment's wear items, or attachments that have been repaired or altered outside the Skid Pro factory in any way, or that has been subject to misuse, negligence, or accident beyond Skid Pro's recommended use and/or machine rated capacity.

This warranty is exclusive and in lieu of all other warranties and conditions. Skid Pro disclaims all other warranties and conditions, express or implied, including any implied warranties or conditions of merchantability or fitness for a particular purpose. In no event shall Skid Pro be liable for any special, incidental, indirect or consequential damage, whatsoever, including, but not limited to, loss or interruption of business, lost profits, or loss of machine use, whether based on contract, warranty, tort, negligence, strict liability, statute or otherwise, even if Skid Pro has been advised of the possibility of such damages.

Hoses and couplers are tested on the attachment prior to shipment and are excluded from the warranty. It is the responsibility of the operator to ensure adequate clearance and hose routing as each carrier machine differs and improper routing can lead to hose damage and premature failure. If hose length is an issue due to the style or type of carrier machine, it is the responsibility of the end user to source correctly sized hoses as they are outside of the normal distribution of carrier machines within the industry.

No agent, employee, or representative of Skid Pro has any authority to bind said company to any affirmation, representation, or warranty concerning its machinery and/or attachments except as specifically set forth herein. Any disagreement or dispute of warranty policy or customer expectations of product, soundness, functionality, or performance would take place in Douglas County, Alexandria, MN, where Skid Pro operates.