



**CP18, CP24, CP30, CP40, CP48
INDEPENDENT DUAL DEPTH
COLD PLANER
(G5 and G5HD)**

MANUAL

- Operation
- Maintenance
- Service
- Parts
- Warranty

Serial number _____

Date released for shipment _____

PUBLICATION DATE: 11/02/21

INTRODUCTION

Thank you for your investment in a SkidPro cold planer. We are confident that you will find that your SkidPro cold planer is the easiest to operate, safest, most durable, and most efficient attachment on the market.

Your SkidPro cold planer is equipped with high performance, heavy duty components. To ensure that these components operate properly and effectively, the instructions in this manual must be followed. If any question regarding the operation or performance of this attachment exists, contact your SkidPro Guru.

This manual contains safety instructions, guidelines for efficient operation, troubleshooting tips, and service maintenance procedures. When applicable, the terms “right” and “left” are referenced from a sitting position and facing forward in the loader.

Throughout this manual, information is provided in boxes and highlighted by the word **IMPORTANT**. This information should be read carefully. If complied with, it will improve the operating efficiency of the unit and provide directives that will minimize costly breakdowns and extend the life of the machine.



This warning symbol appears throughout this manual and indicates that a safety hazard may exist if the information given is not properly followed. When the warning signal is encountered in the manual or on the unit, Be Alert! Your personal safety is involved!

For more copies of this manual or the necessary safety decals, contact your SkidPro Guru.

TABLE OF CONTENTS

	Page
Section 1 - General Information	
1.1 Introduction	4
1.2 Direction Reference	4
1.3 Servicing Drivetrain Components	4
1.4 G5 AND G5HD parts info	4
Section 2 - Safety	
2.1 General	4
2.2 Safety Decals	5
2.3 Call Before You Dig	5
2.4 Mandatory Shutdown procedure	6
Section 3 - Operating Instructions	
3.1 Setup	6
3.2 Attaching to Loader	7
3.3 Basic Operation	7
3.4 Maximizing Production	8
Section 4 - Maintenance and Specifications	
4.1 General	8
4.2 Cutting Drum Maintenance	8
4.3 Cold Planer Lubrication	10
4.4 Drum Removal	11
4.5 Gearbox Removal	11
4.6 Torque Specifications	12
4.7 Cold Planer Specifications	13
Section 5 - Parts & Trouble Shooting Information	
5.1 Chassis Parts	14-17
5.2 Drive Train Parts	18-21
5.3 Attach Parts	22-25
5.4 Decal Parts	26-27
5.5 Hydraulic Parts and Hydraulic Schematic	28-31
5.6 Electric Parts and Electrical Schematics	32-36
5.7 Trouble shooting Depth, Tilt, and Side Shift Functions	37
Section 6 - Warranty Information	
6.1 Warranty	38
6.2 New Machine Delivery Report	39
6.3 Owner Information Card	40

1.1 INTRODUCTION

Your SkidPro cold planer is equipped with high performance, heavy duty components. To ensure that these components operate properly and effectively, the warning and instructions in this manual must be followed. If a question regarding the operation or performance of this attachment exists, contact your SkidPro Guru.

This manual contains safety instructions, guidelines for efficient operation, parts drawings, and hydraulic and electrical schematics.

1.2 DIRECTION REFERENCE

When applicable, the terms “right” and “left” are referenced from the operator’s seat, facing forward in the loader.

1.3 SERVICING DRIVETRAIN COMPONENTS

Detailed repair of the drive train components such as the hydraulic motor and gearbox is not covered in this manual. Contact your SkidPro Guru for information about repairing these components during the warranty period.

Any unauthorized work performed on these components during the warranty period may void your warranty.

1.4 G5 AND G5HD PARTS INFO

This manual contains parts information for both the G5 line of planers and the heavy duty G5HD line.

Some parts drawings are the same for both lines, but some are different. Use care when ordering parts.

If you are unsure of your model, check the serial number tag or consult SkidPro.

2.1 GENERAL SAFETY

A careful operator is the best protection against accidents. Most accidents involving operators of industrial equipment are caused by failure to observe basic safety precautions. Know the equipment and worksite before you operate. Familiarize yourself with the safety precautions listed below.



WARNING

THE FOLLOWING PRECAUTIONS MUST BE OBSERVED FOR THE SAFETY OF THE OPERATOR AND/OR SERVICE PERSONNEL.

1. Read and observe all safety information and decals on the skid steer loader and attachment **BEFORE** operating the unit!
2. Refer to the **SAFETY** section of your skid loaders operator’s manual and observe all safety recommendations set forth in the manual.
3. When loading, keep attachment as low to ramps & trailer as possible.
4. Always lower the loader arms fully before leaving the skid steer seat.
5. **BE SURE** to raise the attachment off the ground **BEFORE** side shifting.
6. **CAREFULLY** inspect ALL hydraulic hoses and connections on a routine basis; Always use a piece of cardboard when searching for leaks.
7. **BE SURE** to exercise the above **MANDATORY SAFETY SHUTDOWN** procedure, **BEFORE** proceeding with any work on the attachment.



WARNING

NEVER CRAWL UNDER RAISED LOADER ARMS.



WARNING

NEVER ALLOW HANDS OR FEET NEAR ANY WORKING PART OF THE ATTACHMENT UNLESS THE MANDATORY SAFETY SHUTDOWN PROCEDURE HAS BEEN COMPLETED.



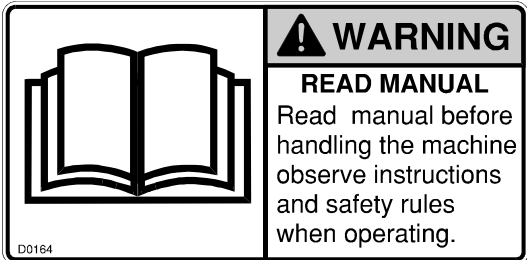
WARNING

NEVER USE YOUR HANDS OR OTHER BODY PART TO CHECK FOR HYDRAULIC FLUID LEAKS. ESCAPING FLUID UNDER PRESSURE CAN PENETRATE THE SKIN CAUSING SERIOUS INJURY. IF HYDRAULIC FLUID PENETRATES THE SKIN, SEEK TREATMENT FROM A DOCTOR FAMILIAR WITH THIS TYPE OF CONDITION OR SERIOUS INJURY OR DEATH MAY RESULT.

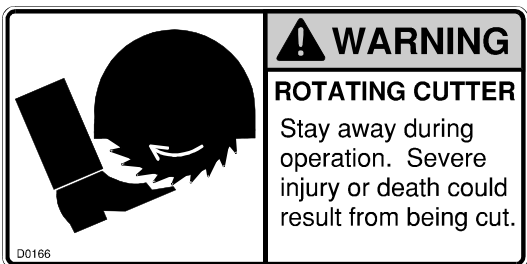
2.2 SAFETY DECALS

The safety decals existing on the attachment should be clearly readable and always followed. The location of the decals is shown in the parts diagram.

The READ MANUAL decal warns the operator to read this manual before operating the attachment.



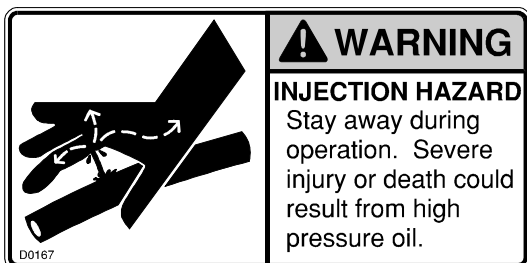
The ROTATING CUTTER decal warns the operator and bystanders to stay away during operation.



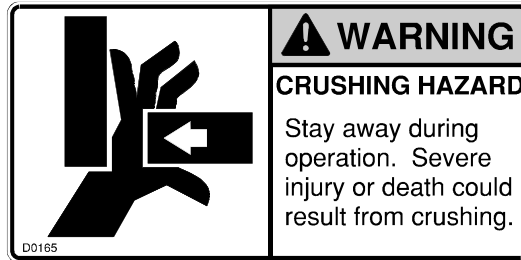
The FLYING OBJECTS decal warns the operator and bystanders to stay away during operation.



The INJECTION HAZARD decal warns the operator and bystanders to stay away during operation.



The CRUSHING HAZARD decal warns the operator and bystanders to stay away during operation.

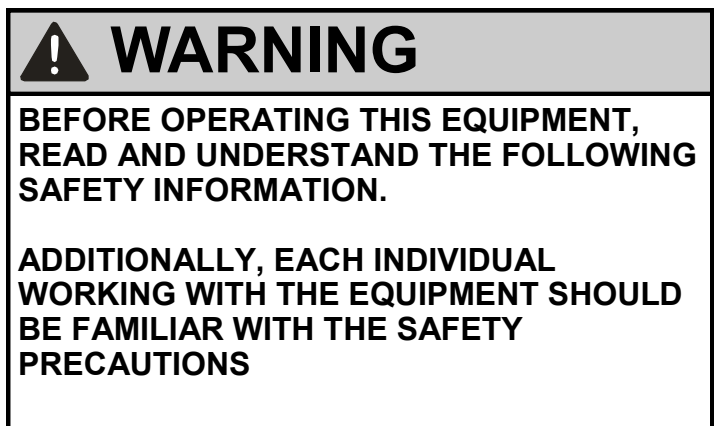


2.3 CALL BEFORE YOU DIG

ACCIDENTS ARE PREVENTABLE WITH YOUR HELP

Understand and comply with applicable laws and regulations.

- Call local utilities before you dig.
1-888-258-0808
- Know the location of underground gas, water and electrical lines.
- Inspect area for holes, drop-offs, or unstable ground.
- Know the weight limitations of operating surfaces and clearances.



2.4 MANDATORY SAFETY SHUTDOWN PROCEDURE



WARNING

FAILURE TO FOLLOW THE SAFETY PROCEDURES BEFORE CLEANING, ADJUSTING, LUBRICATING, OR SERVICING THIS UNIT COULD LEAD TO SERIOUS INJURY OR DEATH.

BEFORE cleaning, adjusting, lubricating, or servicing this unit, **ALWAYS** follow the **MANDATORY SAFETY SHUTDOWN PROCEDURE**:

1. Move the skid steer loader propulsion control levers to the "neutral" position.
2. Shut off the attachment by shutting off the auxiliary and high flow hydraulic output.
3. Lower the loader lift arms completely roll the attachment forward so it is securely resting on firm ground or the shop floor.
4. Engage the loader park brake.
5. Move the loader throttle to the slow idle position, shut the engine off, and remove the ignition key.
6. Keep the key with you at all times when working on the unit so no one can start the engine without your knowledge.

3.1 SETUP

Although the cold planer is supplied fully assembled, some simple checks should be performed before operation



WARNING

READ THIS MANUAL AS WELL AS THE DECALS ON THE ATTACHMENT BEFORE ATTEMPTING ANY MAINTENANCE, SERVICE OR SETUP OF THE UNIT.

begins.

Safety Decals

The safety decals existing on the attachment should be clearly readable and always followed. The location and description of the decals is shown in the parts diagram. Copies of the decals are shown in Safety Decals section.

Hydraulic Couplers

The cold planer may have been shipped without the required hydraulic quick couplers. Obtain correct brand and size and install them on the hoses.

On a 3 line planer, the pressure "in" port on the diverter valve is marked LP for motor pressure. Return flow to the loader is marked LR for motor return. The small hose is for drive motor case drain and is plumbed directly to the skid steer case drain coupler.

On a 5 line cold planer, the loader pressure hose should be plumbed into the MP (motor pressure) port on the recirculation block. The return to loader should be plumbed into the MR (motor return) port.

The case drain hose should be connected directly to the case drain coupler on the skid steer. Do not operate without connecting this hose.

Hoses / Fittings

Hydraulic fittings are used to connect all attachment hoses. All fittings should be tight and free of hydraulic leaks. Hoses must be free of crimps or cuts that might result in leakage. Check your attachment before operation to make sure all hose routings are kink-free and allow for maximum movement of all extend, lift/lower, and/or swing motion required during normal operation.

Wire Harness

The wiring harness to the electro hydraulic valve block should be routed to prevent catching or pinching when side shifting, tilting or lowering the drum fully into the cut.

Drum Assembly

For proper operation, picks must be installed in every holder on the drum.

Motor Case Drain

The SkidPro cold planer has a planetary gearbox

IMPORTANT

Unobstructed case drain flow is critical to proper planer motor operation. Blocked case drain flow will damage the planer motor.

mounted within the drum which is driven through a hydraulic piston motor.

During motor operation, some oil by passes the motor and must be allowed an unobstructed path back to the hydraulic tank. If this flow is restricted, then pressure will build up inside the motor and will fail the motor's shaft seal or the end cap gasket, or both.

Several causes can lead to this failure:

1. Pinched or crushed case drain hose can restrict flow.
2. Disconnected case drain quick coupler can restrict flow.
3. Drum teeth come in contact with the pavement or trailer ramps while the skid steer is in motion, forcing the drum to rotate with the high flow hydraulic circuit "off." This drum rotation forces the motor to turn, which pressurizes the motor's case, because the pressure and return oil's path has been blocked.

If the above issues are not addressed, severe motor damage may result. All of these issues can be attributed to the operator and are preventable with proper operation. Different manufacturers of skid steers use different sizes of case drain couplers and locate the coupler on the skid steer in a different location. Never switch planer between skid steer manufacturers without ensuring the case drain line is hooked up to the correct coupler.

Unless a defect in the motor is found, these shaft seal and end cap gasket failures are not covered under warranty.

3.2 ATTACHING TO LOADER

To attach the unit to the loader, start the loader engine and rotate the coupler out. Pull both coupler levers up to the vertical position. Move the machine forward and pick up the attachment. Rotate the attachment back and push both coupler levers completely down. Make sure the two

IMPORTANT

All hoses should be free of kinks, cuts, or abrasions for safe operation. Do not operate if hoses are worn or damaged.

wedges are completely down and engaged. Be sure pins and latch handles are secure before operating boom and bucket. **Always refer to operating instructions in the skid steer manual.**

Next, connect all hydraulic hoses are to the skid steer quick couplers. Three or five hoses must be connected. Motor pressure, motor return, motor case drain. (auxiliary pressure and return on five line systems).

Lastly, connect the wiring harness to the skid steer.

3.3 BASIC OPERATION

See the specifications in this manual for minimum and maximum pressure and flow requirements. Maximum pressures vary depending on planer valve configuration. Valve configuration varies depending on skid steer manufacturer.

IMPORTANT

Insufficient hydraulic power will result in poor performance. Check pressure and flow per factory skid steer specifications.

The cold planer is a hydraulically powered attachment intended for cutting asphalt or concrete surfaces. The performance of the attachment can vary greatly depending upon how it is used and operated. The recommended operating procedures in this manual should be followed at all times for maximum productivity.

Before operating the attachment, read this entire manual. Follow all safety guidelines in this manual and safety decals on the unit. Make sure that all guards, shields, and decals are in place and in good condition prior to operation.

1. Enter skid steer and fasten seat belt.
2. Make sure the area is clear of bystanders and other workers.
3. Start the skid steer and engage the high flow hydraulic circuit at idle.
4. Adjust the planers tilt, depth and side shift as needed using the electro-hydraulic controls. On a 3 line planer, the high flow circuit must be engaged to operate these adjustments. On a 5 line planer, use the standard flow auxiliary circuit to activate these functions.
5. Fully lower the loader arms and then roll out the bucket function until the planer is level with the pavement.
6. Move the throttle to the full rpm position and keep it there during the milling operations. Begin the operation by setting the depth cylinders to zero depth. Lower the drum into the cut to the desired depth. Move forward at a speed that will allow the drum to cut efficiently without stalling.

3.4 MAXIMIZING PRODUCTION

Production can vary greatly depending on milling depth, type of aggregate in the mix, ambient temperature and condition of the cutting teeth.

Teeth should be inspected every 30 minutes and worn teeth replaced. Teeth should freely rotate in their holders. See the maintenance section for more information.

Optional teeth for milling concrete and water spray kits are available. Water spray kits increase production by suppressing dust and helping the teeth rotate properly.

Only cut straight lines. Do not turn while milling. Cutting curves will quickly wear the edge picks, decreasing production. Milling a radius or curve can also damage the drum.

4.1 GENERAL MAINTENANCE



WARNING

BEFORE PERFORMING ANY MAINTENANCE ON THE UNIT, PERFORM THE MANDATORY SAFETY SHUTDOWN PROCEDURE.

Proper maintenance of the attachment will result in longer life and more productive and cost effective operation. There are two basic categories of maintenance, cutting drum maintenance and component lubrication.

4.2 CUTTING DRUM MAINTENANCE

Cutting Drum maintenance is critical to extending the life of the pick and holder and overall production of the old planer. Inspect the cutting drum every 30 minutes of operation.

The factory installed carbide pick is a general purpose pick and is designed for milling both asphalt and concrete. Picks designed for extended periods of concrete cutting are available from the factory or your dealer.

Pick life varies with depth, density, material, aggregate and maintenance, which includes allowing the tooth to rotate. To maximize pick life, the picks must be free to rotate in the holder. The pick has two functions: serves as the consumable cutting tool and it protects the holder. The tooth must be free to rotate in the holder. If it locks up, then tooth and holder wear is greatly accelerated.

Edge teeth wear faster than center teeth, due to side loading of the drum during the loader's steering corrections.

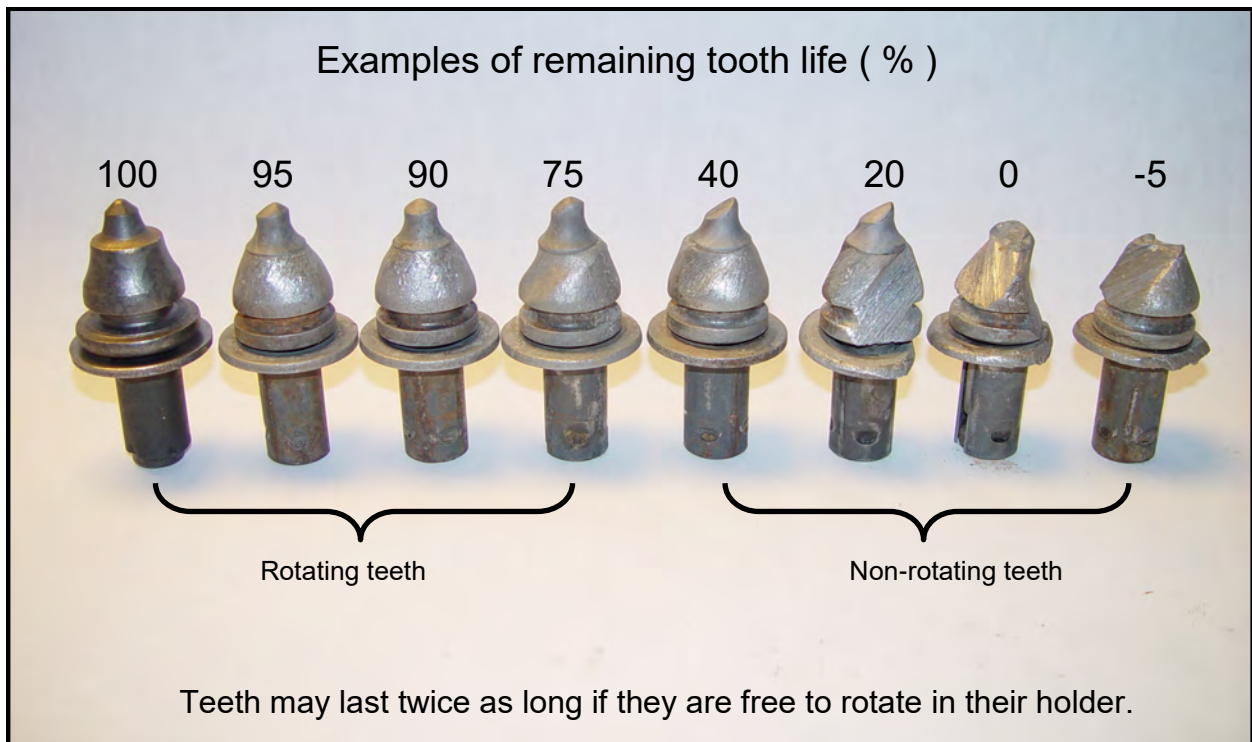
To promote pick rotation, spray the picks daily with a water based asphalt emulsifier to break down asphalt emulsion. (Example: Zep's part # AR6690)

If the pick remains in the holder beyond its intended replacement point, it reduces the cutting performance and will not protect the holder. If the picks are worn enough to indicate slight holder wear, replace the picks.

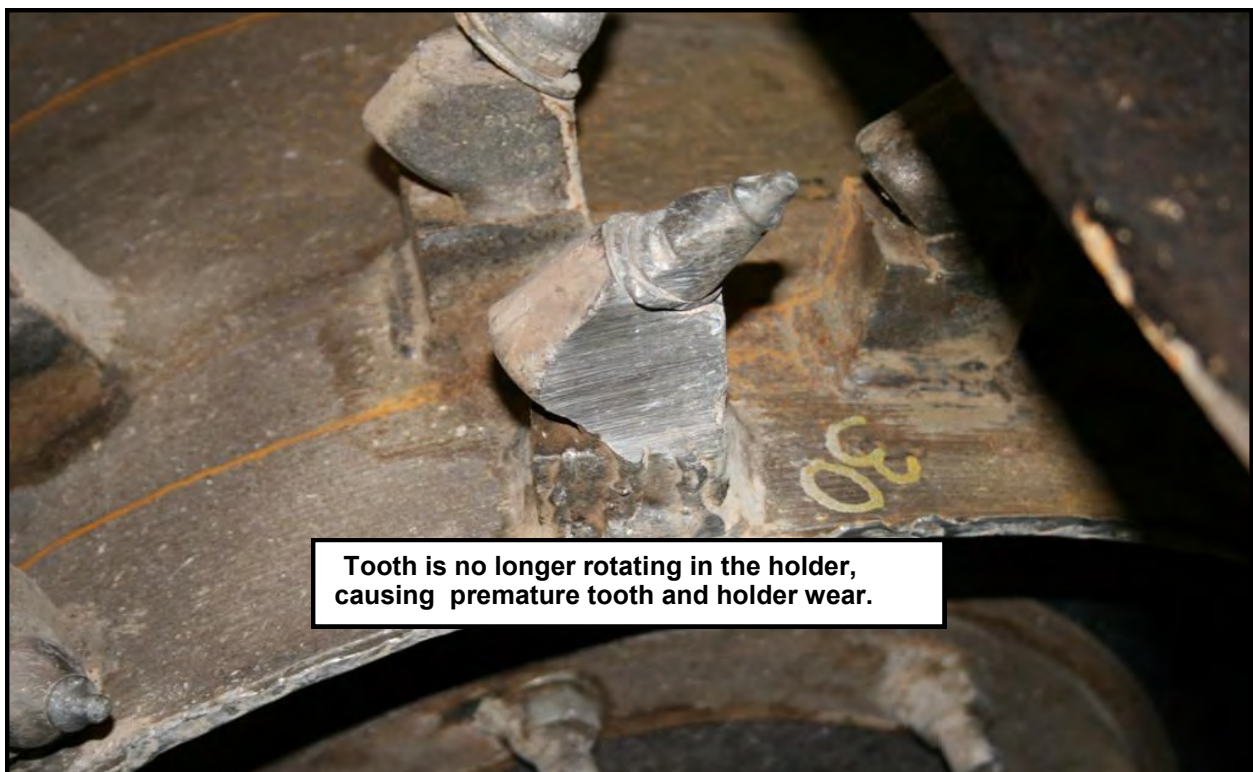
SkidPro recommends using a water spray kit. Using water may increase tooth life by 20 to 40% and also suppresses the milling dust.

The following pictures show examples of excessively worn teeth.

The following picture shows varying degrees of pick wear.



The following picture shows a tooth excessively worn and not rotating in the holder.



REMOVING AND INSTALLING TEETH:

WARNING

NEVER STRIKE THE PICK ON THE CARBIDE TIP. THE CARBIDE CAN BREAK OR CHIP AND CAUSE INJURY.

WARNING

ALWAYS WEAR EYE PROTECTION WHEN PERFORMING THIS OPERATION. HARD-ENED TOOL AND CARBIDE PICKS CAN SHATTER CAUSING INJURY.

A fork type pick tool included with the cold planer and should be used to remove the picks from the holders. Insert the fork into the groove on the tool and strike the tool with a hammer. In the event the pick tool is not available, a punch may be inserted into the bottom of the holders can be used to dislodge the pick.

For installation, the fork type tool should be inserted into the groove on the tooth and struck with a hammer. Also, if the tool is not available, a length of pipe with a 3/4 to 1 inch inside diameter can be placed over the pick to protect the carbide from a direct hit. Striking a small piece of wood placed on the pick to absorb the shock will also prevent damage.

DO NOT STRIKE THE CARBIDE TOOTH TIP WHEN INSTALLING TEETH.

PICK HOLDER REPAIR:

IMPORTANT

TO AVOID BEARING DAMAGE ALWAYS GROUND DIRECTLY TO THE DRUM BEFORE WELDING.

If a pick holder becomes worn, Note the position and angle of the holder, cut the hold holder from the drum using a torch or air-arc. Weld the new holder to the drum in the noted position.

SkidPro does not warrant ANY ground engaging parts (drums, teeth, holders or bases) against wear, unless the wear is determined by SkidPro to have been caused by a manufacturing defect.

4.3 COLD PLANER LUBRICATION

WARNING

FAILURE TO FOLLOW THE PROCEDURES BEFORE CLEANING, ADJUSTING, LUBRICATING, OR SERVICING THIS UNIT COULD LEAD TO SERIOUS INJURY OR DEATH.

Always follow the **MANDATORY SAFETY SHUTDOWN PROCEDURE** before performing ANY maintenance.

There are three types of lubrication required on the SkidPro planer. They are spray lubrication, greased components and planetary gearbox oil.

Spray Lubrication:

Spray side shift bars with graphite lube spray (such as CRC 03094) once a week. **Do not apply grease to the side shift bars.** Grease catches milling dust and causes the side shift mechanism to bind and wear quickly.

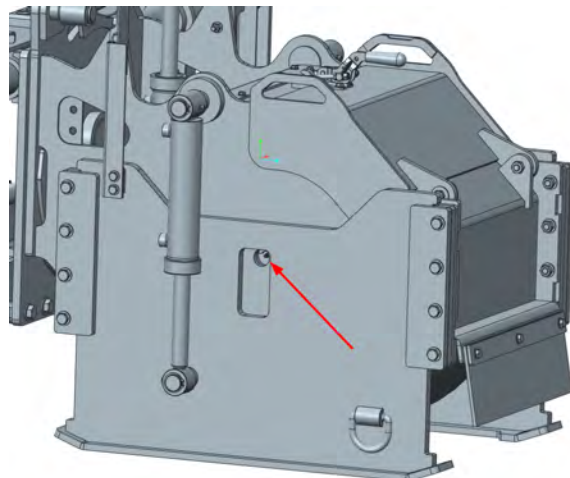
Spray the left and right depth skids where they are retained with graphite lube spray (such as CRC 03094) once a week. **Do not apply grease to the depth skids.** Grease catches milling dust and causes the side shift mechanism to bind and wear quickly.

Grease Lubrication:

All greased components should be greased with an EP Lithium NLGL No. 2 grade grease. One example is Mobilux EP2.

The dead shaft bearing grease zerk can be found on the right side of the chassis. It is recessed in a hole in the chassis plate. It should be greased daily or every 8 hours of operation.

The depth cylinders have a grease zerk on each end. They are located on the sides of the cold planer. These



zerks should be greased weekly or every 40 hours of operation.

Planetary Gearbox:

The planetary gearbox oil should be drained and refilled at 100 hours of operation and every 250 hours after the initial change.

The planetary gearbox contains synthetic EP90 gear oil and should be half full during operation. The planetary gear oil should be drained and replaced each year. Oil Drain and fill procedure:

1. Clean area around drain holes on gearbox spindle.
2. Remove drain plugs on gearbox spindle. Rotate drum so a drain plug is on the bottom. Drain oil.
3. Rotate gearbox so one is plug is horizontal and the other is at the top.
4. Slowly fill gearbox through top spindle drain hole until oil fill reaches the horizontal spindle drain hole.
5. The gearbox should be half full of AGMA EP90 synthetic gear lubricant or SAE 75W90 synthetic gear lubricant. (Chevron RPM Synthetic 75W90 for example) The approximate volume of the gearbox and input adapter is approximately 30 oz.
6. Replace gearbox spindle plug.

4.4 DRUM REMOVAL

1. Perform mandatory shutdown procedure with

WARNING

EXERCISE EXTREME CAUTION DURING THIS OPERATION TO PREVENT TIPPING OF THE UNIT.

WARNING

COMPONENTS ARE EXTREMELY HEAVY AND CAN CAUSE SERIOUS INJURY IF PROPER LIFTING TECHNIQUES ARE NOT USED.

the cold planer adjusted to the maximum depth. Ensure that planer drum is sitting on a stable surface and is chocked to prevent movement.

2. Disconnect the pressure, return, and case drain hose from the hydraulic motor.
3. Remove (2) motor bolts and lift motor away from chassis.
4. Remove (2) retaining rings on each depth cylinder. Remove depth cylinders and set aside.
5. Remove the (8) bolts retaining each depth

skid to the chassis. Remove depth skids and set aside.

6. Remove (8) bolts holding the planetary gearbox to the chassis on the left side.
7. Remove (4) bolts holding the bearing to the chassis on the right side.
8. Lift chassis off drum assembly.

4.5 PLANETARY GEARBOX REMOVAL

1. Remove the drum from the planer chassis.

WARNING

IF THE DRUM DOES NOT REMAIN ON THE FLOOR, LOWER THE PLANER CHASSIS SHUT THE ENGINE OFF. CHECK ALIGNMENT OF BEARING, GEARBOX AND DRUM TO CHASSIS. DO NOT ATTEMPT TO DISLodge THE DRUM WHILE THE PLANER FRAME IS IN THE RAISED POSITION. NEVER PLACE HANDS OR ANY PART OF YOUR BODY IN, AROUND, OR UNDER THE DRUM, AS IT MAY FALL AND CAUSE SERIOUS INJURY.

2. Remove (6) dead shaft nuts from the right side of the drum and remove the dead shaft weldment.
3. Remove (9) planetary stud nuts from the right side of the drum.
4. Remove Planetary /Planetary assembly from left side of drum.

4.6 TORQUE SPECIFICATIONS

NOTE: Unless otherwise specified, all bolts to be torqued as follows.

BOLT SIZE	TORQUE (lb.-ft.)
1/4-20 UNC	8
5/16-18 UNC	17
3/8-16 UNC	30
7/16-14 UNC	50
1/2-13 UNC	75
1/2-20 UNF	90
5/8-11 UNC	150
3/4-10 UNC	260
7/8-9 UNC	430
1-8 UNC	640
1 1/8-7 UNC	800

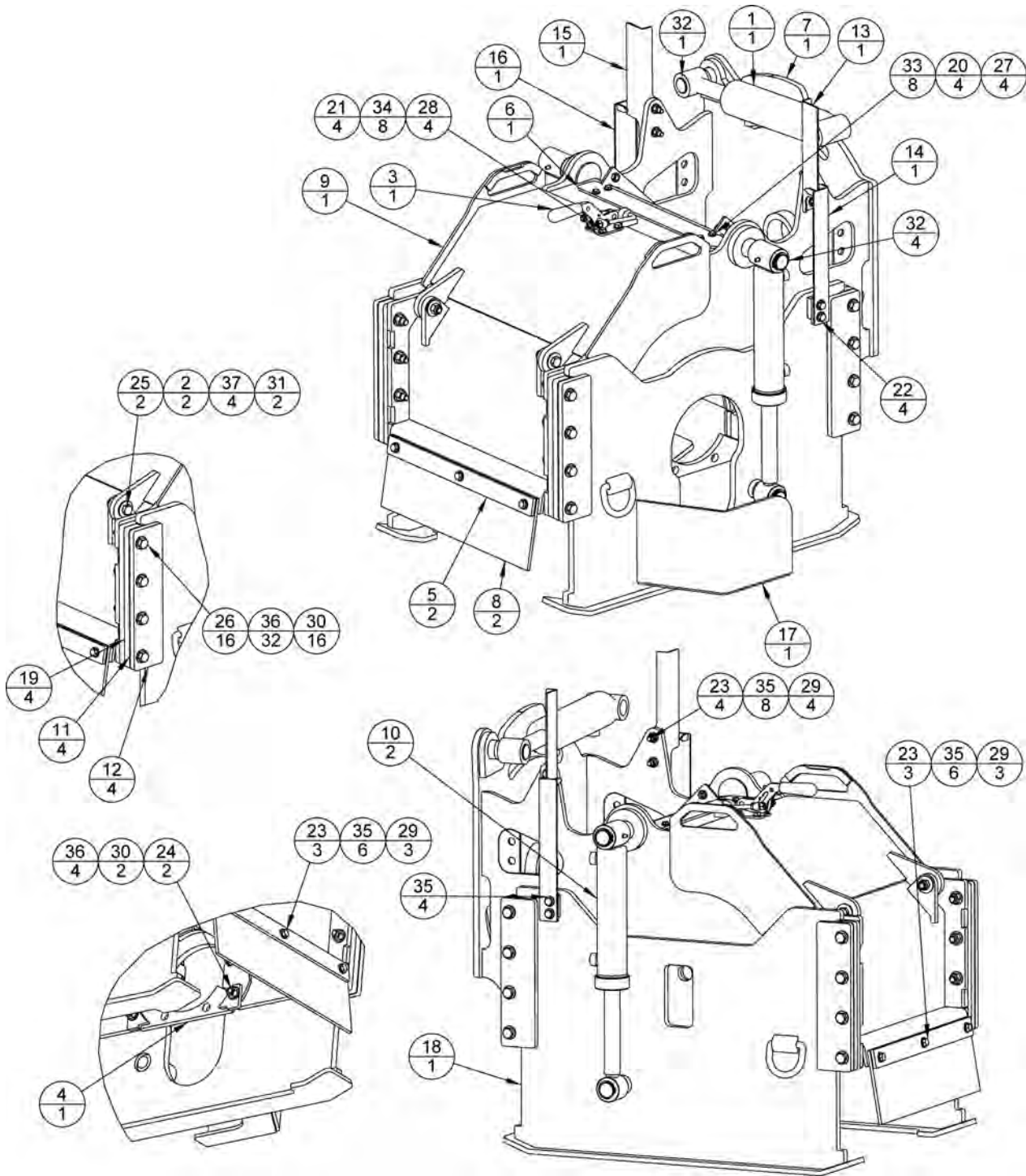
CP18G5, CP24G5, CP30G5, CP40G5 & CP48G5 SPECIFICATIONS

	<i>CP18G5</i>	<i>CP24G5</i>	<i>CP30G5</i>	<i>CP40G5</i>	<i>CP48G5</i>
Cutting Width	18	24	30	40	48
Cutting Depth (in)	0 TO 6	0 TO 6	0 TO 6	0 TO 6	0 TO 6
Number of Teeth	46	56	66	76	106
Min. Hydraulic Flow (gpm)	24	27	30	30	30
Max. Hydraulic Flow (gpm)	42	42	42	42	42
Minimum Pressure (psi)	2000	2000	2000	3000	3500
Maximum Pressure (psi)	5000	5000	5000	5000	5000
Tilt Capability (deg.)	+/-15	+/-13	+/-10	+/-8	+/-6
Side shift Travel (in)	26	26	26	26	26
Approximate Weight (lb.)	1805	1970	2155	2450	2685

CP18G5HD, CP24G5HD, CP30G5HD, CP40G5HD & CP48G5HD SPECIFICATIONS

	<i>CP18G5HD</i>	<i>CP24G5HD</i>	<i>CP30G5HD</i>	<i>CP40G5HD</i>	<i>CP48G5HD</i>
Cutting Width	18	24	30	40	48
Cutting Depth (in)	0 TO 8	0 TO 8	0 TO 8	0 TO 8	0 TO 8
Number of Teeth	46	56	66	76	106
Min. Hydraulic Flow (gpm)	30	30	32	35	35
Max. Hydraulic Flow (gpm)	42	42	42	42	42
Minimum Pressure (psi)	3000	3000	3250	3250	3250
Maximum Pressure (psi)	5000	5000	5000	5000	5000
Tilt Capability (deg.)	+/-15	+/-13	+/-10	+/-8	+/-6
Side shift Travel (in)	26	26	26	26	26
Approximate Weight (lb.)	1990	2225	2770	2910	3205

CP18G5, CP18G5HD, CP24G5 & CP24G5HD CHASSIS PARTS

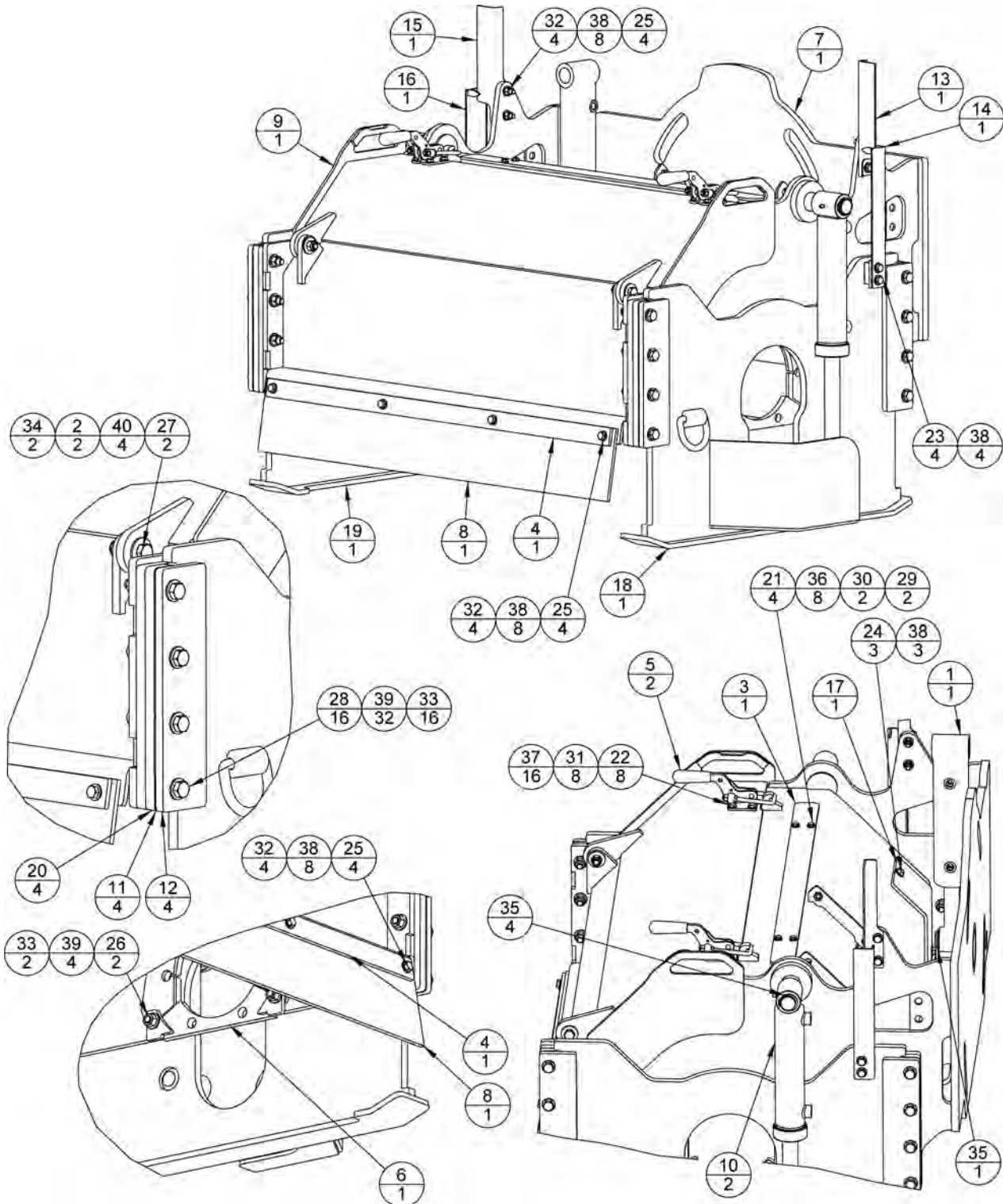


CP18G5, CP18G5HD, CP24G5 & CP24G5HD CHASSIS PARTS

ITEM	QTY	CP18G5 PART NO.	CP24G5 PART NO.	CP18G5HD PART NO.	CP24G5HD PART NO.	DESCRIPTION
1	1	106-0617	106-0617	106-0617	106-0617	CYLINDER, TILT (SEAL KIT: SO-0014)
2	2	106-0713	106-0713	106-0713	106-0713	BUSHING, SHROUD BOLT
3	1	106-2501	106-2501	106-2501	106-2501	LATCH ASSEMBLY, DRAW
4	1	106-3174	106-3174	106-3174	106-3174	WELDMENT, PLANETARY SUPPORT
5	2	106-3222	106-3223	106-3222	106-3223	PLATE, BELTING RETAINER
6	1	106-3224	106-3225	106-3224	106-3225	PLATE, WATER SPRAY BAR COVER
7	1	106-4700	106-4701	106-6701	106-6702	CHASSIS WELDMENT
8	2	106-4716	106-4717	106-4716	106-4717	BELTING, RUBBER
9	1	106-4720	106-4721	106-6729	106-6730	WELDMENT, CHASSIS SHROUD
10	2	106-4770	106-4770	106-6750	106-6750	CYLINDER, DEPTH (SEAL KIT:NOTE A)
11	4	106-4774	106-4774	106-4774	106-4774	PLATE, DEPTH GUIDE
12	4	106-4775	106-4775	106-4775	106-4775	PLATE, DEPTH GUIDE
13	1	106-4777	106-4777	106-6751	106-6751	PLATE, DEPTH GAGE
14	1	106-4778	106-4778	106-6753	106-6753	WELDMENT, DEPTH GAGE
15	1	106-4781	106-4781	106-6754	106-6754	PLATE, DEPTH GAGE
16	1	106-4782	106-4782	106-6752	106-6752	WELDMENT, DEPTH GAGE
17	1	106-5550	106-5550	106-6745	106-6745	WELDMENT, DEPTH SKID - LEFT
18	1	106-5551	106-5551	106-6746	106-6746	WELDMENT, DEPTH SKID - RIGHT
19	4	106-5554	106-5554	106-5554	106-5554	PLATE, DEPTH SKID SPACER
20	4	HB025L0100A	HB025L0100A	HB025L0100A	HB025L0100A	BOLT, 1/4-20 X 1.00 PLATED
21	4	HB031L0100A	HB031L0100A	HB031L0100A	HB031L0100A	BOLT, 5/16-18 X 1.00 PLATED
22	4	HB038L0075A	HB038L0075A	HB038L0075A	HB038L0075A	BOLT, 3/8-16 X 0.75 PLATED
23	10	HB038L0150A	HB038L0150A	HB038L0150A	HB038L0150A	BOLT, 3/8-16 X 1.50 PLATED
24	2	HB050L0175A	HB050L0175A	HB050L0175A	HB050L0175A	BOLT, 1/2-13 x 1.75 PLATED
25	2	HB050L0200A	HB050L0200A	HB050L0200A	HB050L0200A	BOLT, 1/2-13 X 2.00 PLATED
26	16	HB050L0325A	HB050L0325A	HB050L0325A	HB050L0325A	BOLT, 1/2-13 X 3.25 PLATED
27	4	HN025F	HN025F	HN025F	HN025F	NUT, 1/4-20 PLATED NYLOCK
28	4	HN031F	HN031F	HN031F	HN031F	NUT, 5/16-18 PLATED NYLOCK
29	10	HN038F	HN038F	HN038F	HN038F	NUT, 3/8-16 PLATED NYLOCK
30	18	HN050A	HN050A	HN050A	HN050A	NUT, 1/2-13 PLATED
31	2	HN050F	HN050F	HN050F	HN050F	NUT, 1/2-20 PLATED NYLOCK
32	5	HRRE125A	HRRE125A	HRRE125A	HRRE125A	RETAINING RING, EXTERNAL 1.25" DIA.
33	8	HW025NA	HW025NA	HW025NA	HW025NA	WASHER, 1/4 NARROW PLATED
34	8	HW031NA	HW031NA	HW031NA	HW031NA	WASHER, 5/16 NARROW PLATED
35	24	HW038NA	HW038NA	HW038NA	HW038NA	WASHER, 3/8 NARROW PLATED
36	36	HW050NA	HW050NA	HW050NA	HW050NA	WASHER, 1/2 NARROW PLATED
37	4	HW050WA	HW050WA	HW050WA	HW050WA	WASHER, 1/2 WIDE PLATED

NOTE A: 106-4770 SEAL KIT SO-0402, 106-6750 SEAL KIT SO-0554.

CP30G5, CP30G5HD, CP40G5, CP40G5HD, CP48G5, CP48G5HD CHASSIS PARTS



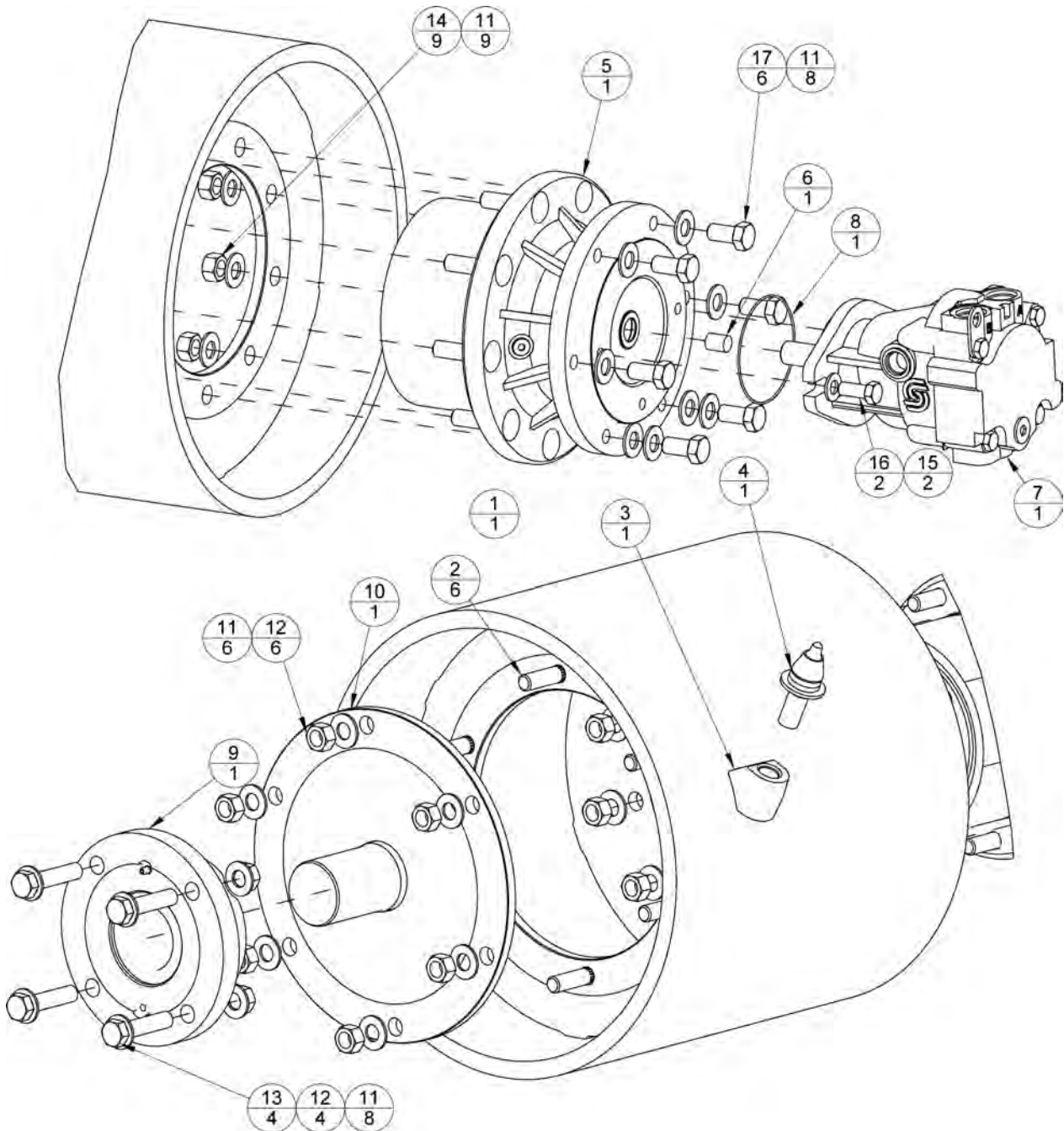
CP30G5, CP30G5HD, CP40G5, CP40G5HD, CP48G5, CP48G5HD CHASSIS PARTS

ITEM	QTY	CP30G5 PART NO.	CP40G5 PART NO.	CP48G5 PART NO.	CP30G5HD PART NO.	CP40G5HD PART NO.	CP48G5HD PART NO.	DESCRIPTION
1	1	106-0617	106-0617	106-0617	106-0617	106-0617	106-0617	CYLINDER, TILT (SEAL KIT: SO-0014)
2	2	106-0713	106-0713	106-0713	106-0713	106-0713	106-0713	BUSHING, SHROUD BOLT
3	1	106-1189	106-1190	106-2279	106-1189	106-1190	106-2279	PLATE, WATERKIT COVER
4	2	106-1201	106-1202	106-2378	106-1201	106-1202	106-2378	PLATE, BELTING RETAINER
5	2	106-2501	106-2501	106-2501	106-2501	106-2501	106-2501	LATCH ASSEMBLY, DRAW (NOTE B)
6	1	106-3174	106-3174	106-3174	106-3174	106-3174	106-3174	WELDMENT, PLANETARY SUPPORT
7	1	106-4702	106-4703	106-6200	106-6703	106-6704	106-6705	CHASSIS WELDMENT
8	2	106-4718	106-4719	106-6207	106-4718	106-4719	106-6207	BELTING, RUBBER
9	1	106-4722	106-4723	106-6205	106-6731	106-6732	106-6733	WELDMENT, CHASSIS SHROUD
10	2	106-4770	106-4770	106-4770	106-6750	106-6750	106-6750	CYLINDER, DEPTH (SEAL KIT: NOTE A)
11	4	106-4774	106-4774	106-4774	106-4774	106-4774	106-4774	PLATE, DEPTH GUIDE
12	4	106-4775	106-4775	106-4775	106-4775	106-4775	106-4775	PLATE, DEPTH GUIDE
13	1	106-4777	106-4777	106-4777	106-6751	106-6751	106-6751	PLATE, DEPTH GAGE
14	1	106-4778	106-4778	106-4778	106-6753	106-6753	106-6753	WELDMENT, DEPTH GAGE
15	1	106-4781	106-4781	106-4781	106-6754	106-6754	106-6754	PLATE, DEPTH GAGE
16	1	106-4782	106-4782	106-4782	106-6752	106-6752	106-6752	WELDMENT, DEPTH GAGE
17	1	106-4906	106-4906	106-4906	106-4906	106-4906	106-4906	PLATE, TILT PIN COVER
18	1	106-5550	106-5550	106-5550	106-6745	106-6745	106-6745	WELDMENT, DEPTH SKID - LEFT
19	1	106-5551	106-5551	106-5551	106-6746	106-6746	106-6746	WELDMENT, DEPTH SKID - RIGHT
20	4	106-5554	106-5554	106-5554	106-5554	106-5554	106-5554	PLATE, DEPTH SKID SPACER
21	4	HB025L0100A	HB025L0100A	HB025L0100A	HB025L0100A	HB025L0100A	HB025L0100A	BOLT, 1/4-20 X 1.00 PLATED
22	8	HB031L0100A	HB031L0100A	HB031L0100A	HB031L0100A	HB031L0100A	HB031L0100A	BOLT, 5/16-18 X 1.00 PLATED
23	4	HB038L0075A	HB038L0075A	HB038L0075A	HB038L0075A	HB038L0075A	HB038L0075A	BOLT, 3/8-16 X 0.75 PLATED
24	3	HB038L0100A	HB038L0100A	HB038L0100A	HB038L0100A	HB038L0100A	HB038L0100A	BOLT, 3/8-16 X 1.00 PLATED
25	12	HB038L0150A	HB038L0150A	HB038L0150A	HB038L0150A	HB038L0150A	HB038L0150A	BOLT, 3/8-16 X 1.50 PLATED
26	2	HB050L0175A	HB050L0175A	HB050L0175A	HB050L0175A	HB050L0175A	HB050L0175A	BOLT, 1/2-13 x 1.75 PLATED
27	2	HB050L0200A	HB050L0200A	HB050L0200A	HB050L0200A	HB050L0200A	HB050L0200A	BOLT, 1/2-13 X 2.00 PLATED
28	16	HB050L0325A	HB050L0325A	HB050L0325A	HB050L0325A	HB050L0325A	HB050L0325A	BOLT, 1/2-13 X 3.25 PLATED
29	2	HN025A	HN025A	HN025A	HN025A	HN025A	HN025A	NUT, 1/4-20 PLATED
30	2	HN025F	HN025F	HN025F	HN025F	HN025F	HN025F	NUT, 1/4-20 PLATED NYLOCK
31	8	HN031F	HN031F	HN031F	HN031F	HN031F	HN031F	NUT, 5/16-18 PLATED NYLOCK
32	12	HN038F	HN038F	HN038F	HN038F	HN038F	HN038F	NUT, 3/8-16 PLATED NYLOCK
33	18	HN050A	HN050A	HN050A	HN050A	HN050A	HN050A	NUT, 1/2-13 PLATED
34	2	HN050F	HN050F	HN050F	HN050F	HN050F	HN050F	NUT, 1/2-20 PLATED NYLOCK
35	5	HRRE125A	HRRE125A	HRRE125A	HRRE125A	HRRE125A	HRRE125A	RETAINING RING, EXT. 1.25" DIA.
36	8	HW025NA	HW025NA	HW025NA	HW025NA	HW025NA	HW025NA	WASHER, 1/4 NARROW PLATED
37	16	HW031NA	HW031NA	HW031NA	HW031NA	HW031NA	HW031NA	WASHER, 5/16 NARROW PLATED
38	31	HW038NA	HW038NA	HW038NA	HW038NA	HW038NA	HW038NA	WASHER, 3/8 NARROW PLATED
39	36	HW050NA	HW050NA	HW050NA	HW050NA	HW050NA	HW050NA	WASHER, 1/2 NARROW PLATED
40	4	HW050WA	HW050WA	HW050WA	HW050WA	HW050WA	HW050WA	WASHER, 1/2 WIDE PLATED

NOTE A: 106-4770 SEAL KIT SO-0402, 106-6750 SEAL KIT SO-0554.

NOTE B: CP40G5HD AND CP48G5HD USE 3 LATCHES INSTEAD OF 2.

CP18G5, CP24G5, CP30G5, CP40G5 & CP48G5 DRIVETRAIN PARTS



CP18G5, CP24G5, CP30G5, CP40G5 & CP48G5 DRIVETRAIN PARTS

ITEM	QTY	CP18G5 PART NO.	CP24G5 PART NO.	CP30G5 PART NO.	CP40G5 PART NO.	CP48G5 PART NO.	DESCRIPTION
1	1	106-4732	106-4733	106-4734	106-4735	106-6212	ASSEMBLY, DRUM PICKS & STUDS
2	6	106-0669	106-0669	106-0669	106-0669	106-0669	BOLT, 5/8-11 X 2.25 RND HD, RBD NECK
3	NOTE A	106-0927	106-0927	106-0927	106-0927	106-0927	HOLDER, PICK
4	NOTE A	106-0831	106-0831	106-0831	106-0831	106-0831	PICK, ASPHALT (CONCRETE PICK: 106-0832)
5	1	106-6460	106-6460	106-6460	106-6460	106-6460	GEARBOX, PLANETARY (NOTE B) (NOTE D)
6	1	106-4915	106-4915	106-4915	106-4915	106-4915	SPACER, GEARBOX DISCONNECT
7	1	106-0971	106-0971	106-0971	106-0971	106-0971	MOTOR, HYD PISTON (NOTE B) (NOTE C) (NOTE D)
8	1	OR2-045A	OR2-045A	OR2-045A	OR2-045A	OR2-045A	SEAL, O-RING 2-045
9	1	106-0910	106-0910	106-0910	106-0910	106-0910	BEARING ASSEMBLY, DEAD SHAFT
10	1	106-1111	106-1111	106-1111	106-1111	106-1111	WELDMENT, MACHINED DEAD SHAFT
11	31	HW063NA	HW063NA	HW063NA	HW063NA	HW063NA	WASHER, 5/8 NARROW PLATED
12	10	HN063A	HN063A	HN063A	HN063A	HN063A	NUT, 5/8-11 PLATED
13	4	HB063L0275A	HB063L0275A	HB063L0275A	HB063L0275A	HB063L0275A	BOLT, 5/8-11 X 2.75 PLATED
14	9	HN063B	HN063B	HN063B	HN063B	HN063B	NUT, 5/8-18 PLATED
15	2	HW050NA	HW050NA	HW050NA	HW050NA	HW050NA	WASHER, 1/2 NARROW PLATED
16	2	HB050L0125B	HB050L0125B	HB050L0125B	HB050L0125B	HB050L0125B	BOLT, 1/2-20 x 1.25 PLATED
17	6	HB063L0125A	HB063L0125A	HB063L0125A	HB063L0125A	HB063L0125A	BOLT, 5/8-11 X 1.25 PLATED (NOTE D)

NOTE A : ITEMS 2 & 3 VARY IN QUANTITY AS FOLLOWS

CP18	- 46
CP24	- 56
CP30	- 66
CP40	- 82
CP48	- 94

NOTE B: FOR REPAIR INSTRUCTIONS, 5 CONSULT FACTORY.
FOR PLANERS BUILT PRIOR TO 1/24/19 - GEARBOX PART NO. IS 106-0970. CONSULT FACTORY FOR REPAIR INSTRUCTIONS.

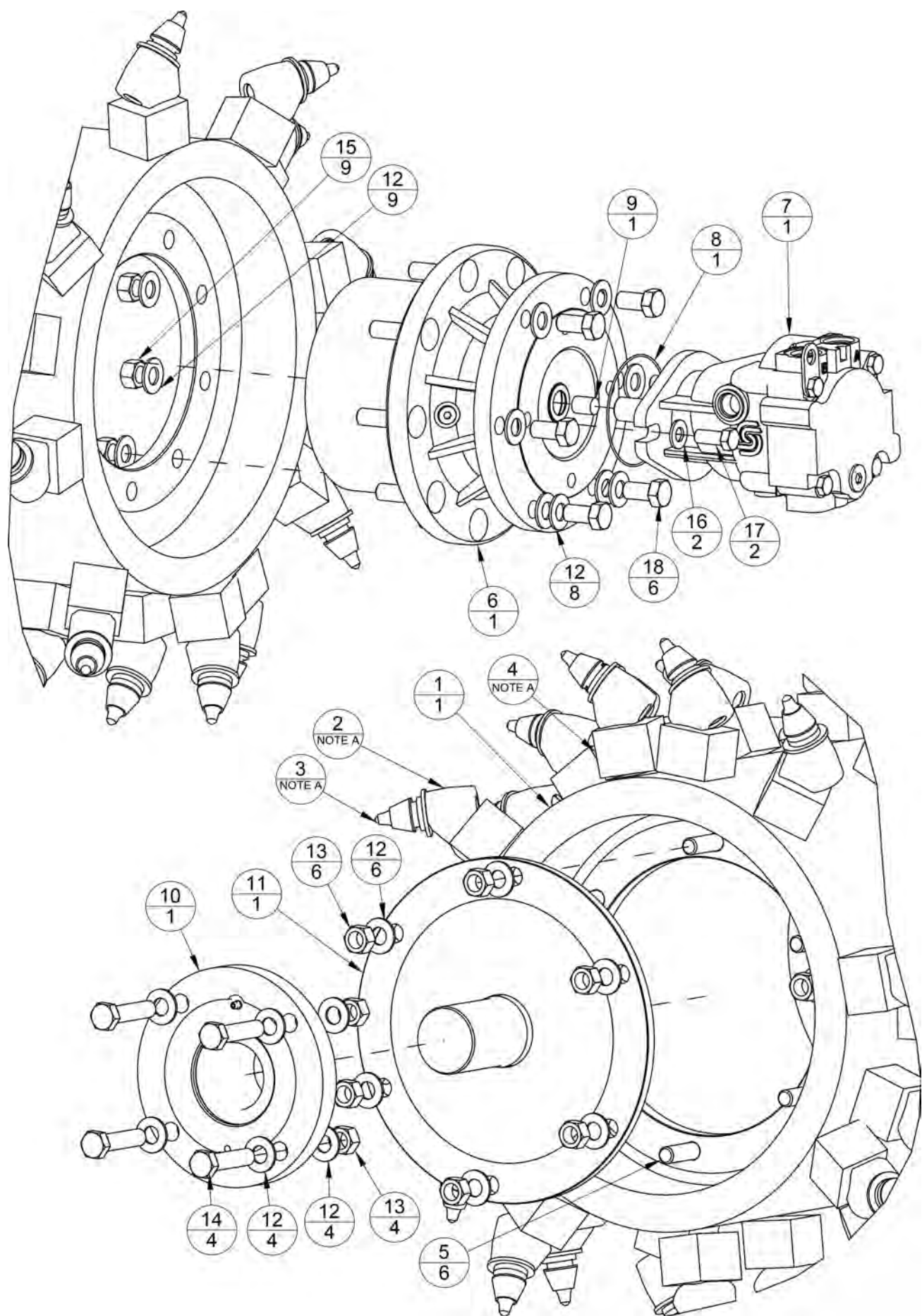
NOTE C: PARTIAL MOTOR PARTS LIST:

MOTOR SEAL KIT:	SO-0078
END PLATE GASKET:	SO-0079
SHAFT SEAL:	SO-0222
SHAFT SEAL WASHER:	SO-0221
SHAFT SEAL RETAINING RING:	SO-0080

NOTE D: FOR UNITS EQUIPPED WITH 106-6460 GEARBOX, BOLT LENGTH (ITEM 17) IS CRITICAL. BOLTS CANNOT BE LONGER THAN SPECIFIED OR GEARBOX SEAL WILL BE DAMAGED. NOTE THAT THE TWO BOTTOM BOLTS HAVE TWO WASHERS EACH.

NOTE E: Unauthorized disassembly of these components during the warranty period may void your warranty. Consult factory before disassembly and repair.

CP18G5HD, CP24G5HD, CP30G5HD, CP40G5HD & CP48G5HD DRIVETRAIN PARTS



CP18G5HD, CP24G5HD, CP30G5HD, CP40G5HD & CPG548HD DRIVETRAIN PARTS

ITEM	QTY	CP18G5HD PART NO.	CP24G5HD PART NO	CP30G5HD PART NO.	CP40G5HD PART NO.	CP48G5HD PART NO.	DESCRIPTION
1	1	106-1259	106-1260	106-1261	106-1262	106-6842	ASSEMBLY, DRUM WITH PICKS & STUDS
2	NOTE A	106-0927	106-0927	106-0927	106-0927	106-0927	HOLDER, PICK
3	NOTE A	106-0831	106-0831	106-0831	106-0831	106-0831	PICK, ASPHALT
4	NOTE A	106-1618	106-1618	106-1618	106-1618	106-1618	BLOCK, HOLDER
5	6	106-0669	106-0669	106-0669	106-0669	106-0669	BOLT, 5/8-11 X 2.25 ROUND HEAD, RIBBED NECK
6	1	106-6460	106-6460	106-6460	106-6460	106-6460	GEARBOX, PLANETARY (NOTE B) (NOTE E)
7	1	106-0971	106-0971	106-0971	106-0971	106-0971	MOTOR, HYD. PISTON (NOTE B) (NOTE C) (NOTE E)
8	1	OR2-045A	OR2-045A	OR2-045A	OR2-045A	OR2-045A	SEAL, O-RING 2-045
9	1	106-4915	106-4915	106-4915	106-4915	106-4915	SPACER, GEARBOX DISCONNECT
10	1	106-0910	106-0910	106-0910	106-0910	106-0910	BEARING ASSEMBLY, DEAD SHAFT
11	1	106-1111	106-1111	106-1111	106-1111	106-1111	WELDMENT, MACHINED DEAD SHAFT
12	31	HW063NA	HW063NA	HW063NA	HW063NA	HW063NA	WASHER, 5/8 NARROW PLATED
13	10	HN063A	HN063A	HN063A	HN063A	HN063A	NUT, 5/8-11 PLATED
14	4	HB063L0275A	HB063L0275A	HB063L0275A	HB063L0275A	HB063L0275A	BOLT, 5/8-11 X 2.75 PLATED
15	9	HN063B	HN063B	HN063B	HN063B	HN063B	NUT, 5/8-18 PLATED
16	2	HW050NA	HW050NA	HW050NA	HW050NA	HW050NA	WASHER, 1/2 NARROW PLATED
17	2	HB050L0125B	HB050L0125B	HB050L0125B	HB050L0125B	HB050L0125B	BOLT, 1/2-20 x 1.25 PLATED
18	6	HB063L0125A	HB063L0125A	HB063L0125A	HB063L0125A	HB063L0125A	BOLT, 5/8-11 X 1.25 PLATED (NOTE D)

NOTE A : ITEMS 2 & 3 VARY IN QUANTITY AS FOLLOWS

CP18 - 46
CP24 - 56
CP30 - 66
CP40 - 82
CP48 - 94

NOTE B: CONSULT FACTORY FOR REPAIR INSTRUCTIONS.

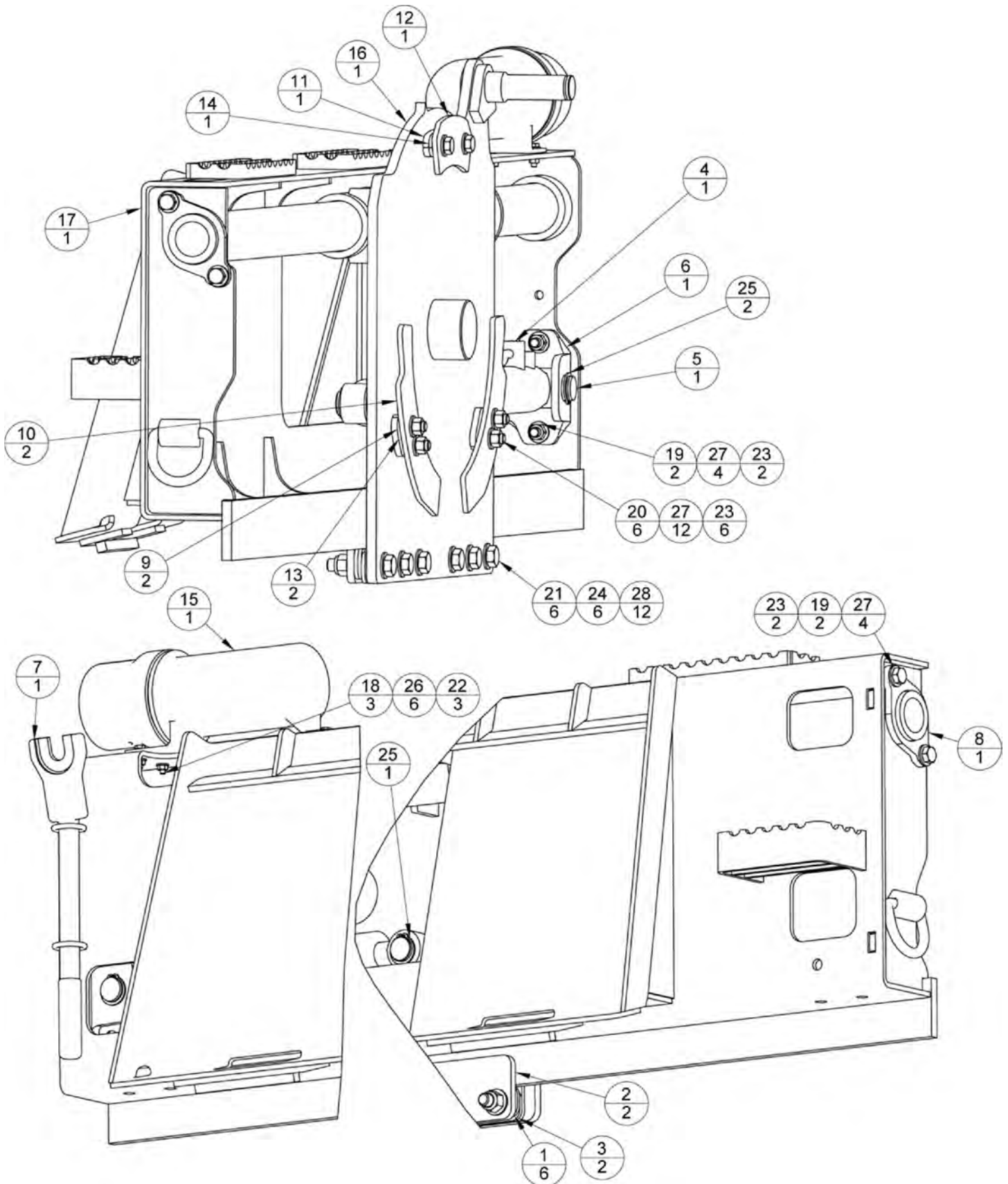
NOTE C: PARTIAL MOTOR PARTS LIST:

MOTOR SEAL KIT: SO-0078
END PLATE GASKET: SO-0079
SHAFT SEAL: SO-0222
SHAFT SEAL WASHER: SO-0221
SHAFT SEAL RETAINING RING: SO-0080

NOTE D: BOLT LENGTH (ITEM 17) IS CRITICAL. BOLTS CANNOT BE LONGER THAN SPECIFIED OR GEARBOX SEAL WILL BE DAMAGED. NOTE THAT THE TWO BOTTOM BOLTS HAVE TWO WASHERS EACH.

NOTE E: Unauthorized disassembly of these components during the warranty period may void your warranty. Consult factory before disassembly and repair.

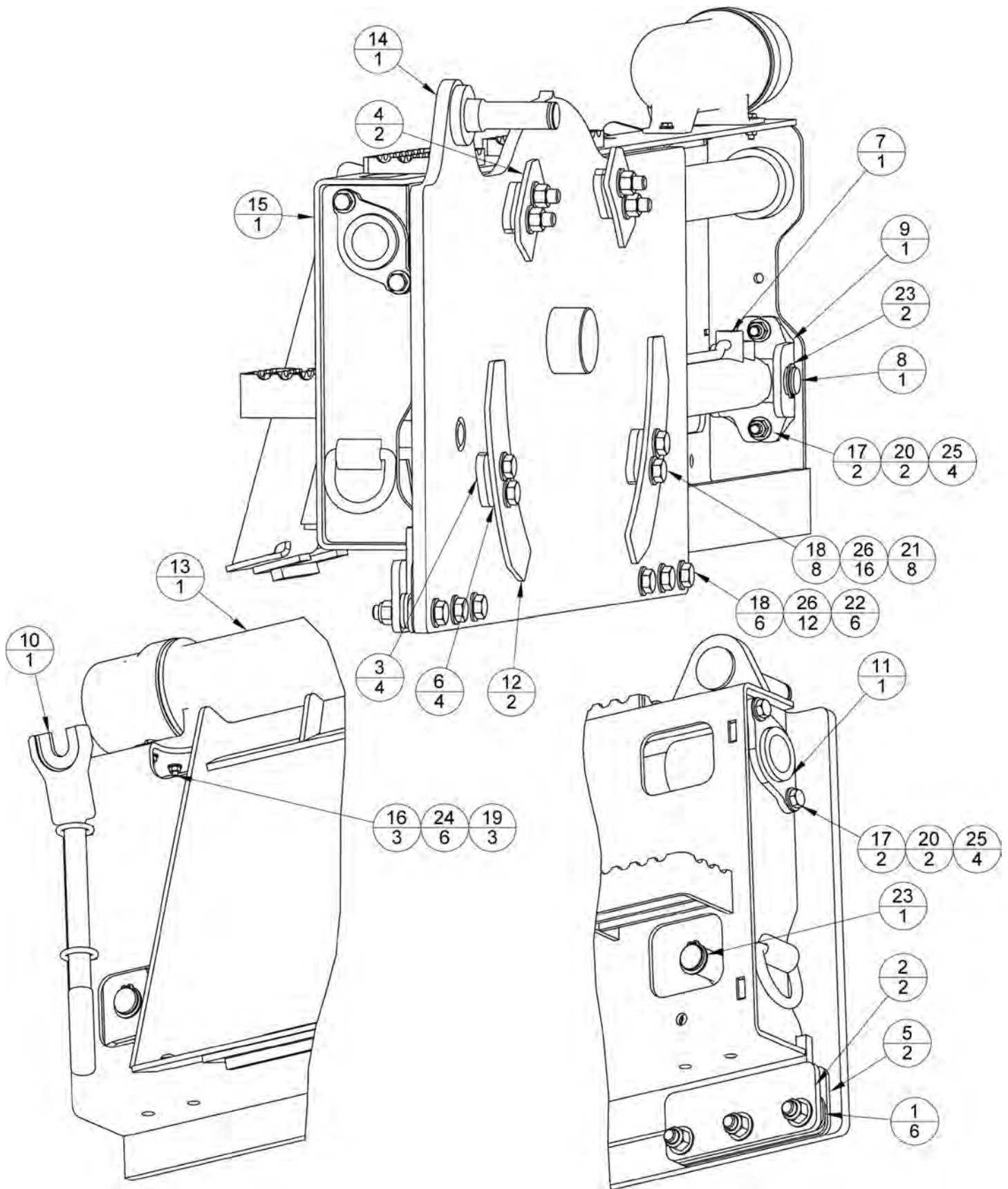
CP18G5, CP18G5HD, CP24G5 & CP24G5HD ATTACH PARTS



CP18G5, CP18G5HD, CP24G5 & CP24G5HD ATTACH PARTS

		CP18G5 & CP18G5HD	CP24G5 & CP24G5HD	
ITEM	QTY	PART NO.	PART NO.	DESCRIPTION
1	6	106-0532	106-0532	PLATE, SIDE SHIFT SPACER
2	2	106-0533	106-0533	PLATE, SIDE SHIFT RETAINER
3	2	106-0589	106-0589	PLATE, SIDE SHIFT SPACER (PLASTIC)
4	1	106-0657	106-0657	CYLINDER, SIDE SHIFT (SEAL KIT:SO-0013)
5	1	106-0790	106-0790	PIN, SIDE SHIFT
6	1	106-0813	106-0813	PLATE, CYLINDER BRACKET
7	1	106-4696	106-4696	TOOL, PICK REMOVAL
8	1	106-1360	106-1360	WELDMENT, SIDE SHIFT ROD
9	2	106-3182	106-3182	PLATE, PIVOT SPACER
10	2	106-3183	106-3183	PLATE, PIVOT RETAINER
11	1	106-3185	106-3185	PLATE, PIVOT SPACER
12	1	106-3186	106-3186	PLATE, PIVOT RETAINER
13	2	106-3548	106-3548	PLATE, PIVOT SPACER
14	1	106-3549	106-3549	PLATE, PIVOT SPACER
15	1	106-4323	106-4323	TUBE, MANUAL STORAGE
16	1	106-4746	106-4747	WELDMENT, SIDE SHIFT
17	1	106-4784	106-4784	WELDMENT, ATTACH
18	3	HB025L0100A	HB025L0100A	BOLT, 1/4-20 X 1.00 PLATED
19	4	HB050L0175A	HB050L0175A	BOLT, 1/2-13 x 1.75 PLATED
20	6	HB050L0225A	HB050L0225A	BOLT, 1/2-13 X 2.25 PLATED
21	6	HB063L0300A	HB063L0300A	BOLT, 5/8-11 X 3.00 PLATED
22	3	HN025A	HN025A	NUT, 1/4-20 PLATED
23	10	HN050A	HN050A	NUT, 1/2-13 PLATED
24	6	HN063F	HN063F	NUT, 5/8-11 PLATED NYLOCK
25	3	HRRE125A	HRRE125A	RETAINING RING-EXTERNAL 1.25" DIA.
26	6	HW025NA	HW025NA	WASHER, 1/4 NARROW PLATED
27	20	HW050NA	HW050NA	WASHER, 1/2 NARROW PLATED
28	12	HW063NA	HW063NA	WASHER, 5/8 NARROW PLATED

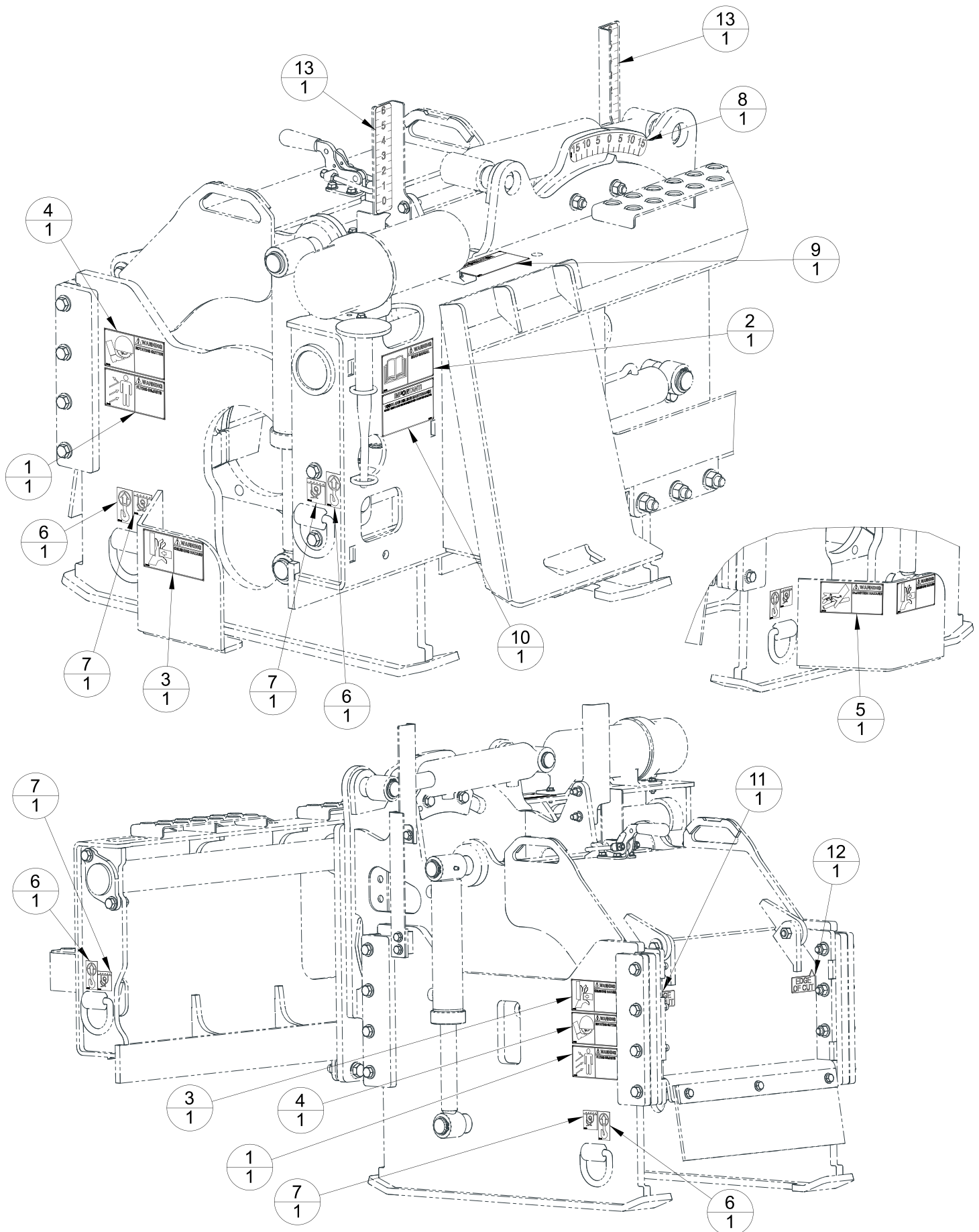
CP30G5, CP30G5HD, CP40G5, CP40G5HD, CP48G5, CP48G5HD ATTACH PARTS



CP30G5, CP30G5HD, CP40G5, CP40G5HD, CP48G5, CP48G5HD ATTACH PARTS

		CP30G5 & CP30G5HD	CP40G5 & CP40G5HD	CP48G5 & CP48G5HD	
ITEM	QTY	PART NO.	PART NO.	PART NO.	DESCRIPTION
1	6	106-0532	106-0532	106-0532	PLATE, SIDE SHIFT SPACER
2	2	106-0533	106-0533	106-0533	PLATE, SIDE SHIFT RETAINER
3	4	106-0534	106-0534	106-0534	PLATE, PIVOT SPACER
4	2	106-0535	106-0535	106-0535	PLATE, PIVOT RETAINER
5	2	106-0589	106-0589	106-0589	PLATE, SIDE SHIFT SPACER (PLASTIC)
6	4	106-0606	106-0606	106-0606	PLATE, PIVOT SPACER
7	1	106-0657	106-0657	106-0657	CYLINDER, SIDESHIFT (SEAL KIT:SO-0013)
8	1	106-0790	106-0790	106-0790	PIN, SIDE SHIFT/LF JACK
9	1	106-0813	106-0813	106-0813	PLATE, CYLINDER BRACKET
10	1	106-4696	106-4696	106-4696	TOOL, PICK REMOVAL
11	1	106-1360	106-1360	106-1360	WELDMENT, SIDE SHIFT ROD
12	2	106-2165	106-2165	106-2165	PLATE, PIVOT RETAINER
13	1	106-4323	106-4323	106-4323	TUBE, MANUAL STORAGE
14	1	106-4748	106-4749	106-6208	WELDMENT, SIDE SHIFT
15	1	106-4903	106-4903	106-4903	WELDMENT, ATTACH
16	3	HB025L0100A	HB025L0100A	HB025L0100A	BOLT, 1/4-20 X 1.00 PLATED
17	4	HB050L0175A	HB050L0175A	HB050L0175A	BOLT, 1/2-13 x 1.75 PLATED
18	14	HB063L0300A	HB063L0300A	HB063L0300A	BOLT, 5/8-11 X 3.00 PLATED
19	3	HN025A	HN025A	HN025A	NUT, 1/4-20 PLATED
20	4	HN050A	HN050A	HN050A	NUT, 1/2-13 PLATED
21	8	HN063A	HN063A	HN063A	NUT, 5/8-11 PLATED
22	6	HN063F	HN063F	HN063F	NUT, 5/8-11 PLATED NYLOCK
23	3	HRRE125A	HRRE125A	HRRE125A	RETAINING RING-EXTERNAL 1.25" DIA.
24	6	HW025NA	HW025NA	HW025NA	WASHER, 1/4 NARROW PLATED
25	8	HW050NA	HW050NA	HW050NA	WASHER, 1/2 NARROW PLATED
26	28	HW063NA	HW063NA	HW063NA	WASHER, 5/8 NARROW PLATED

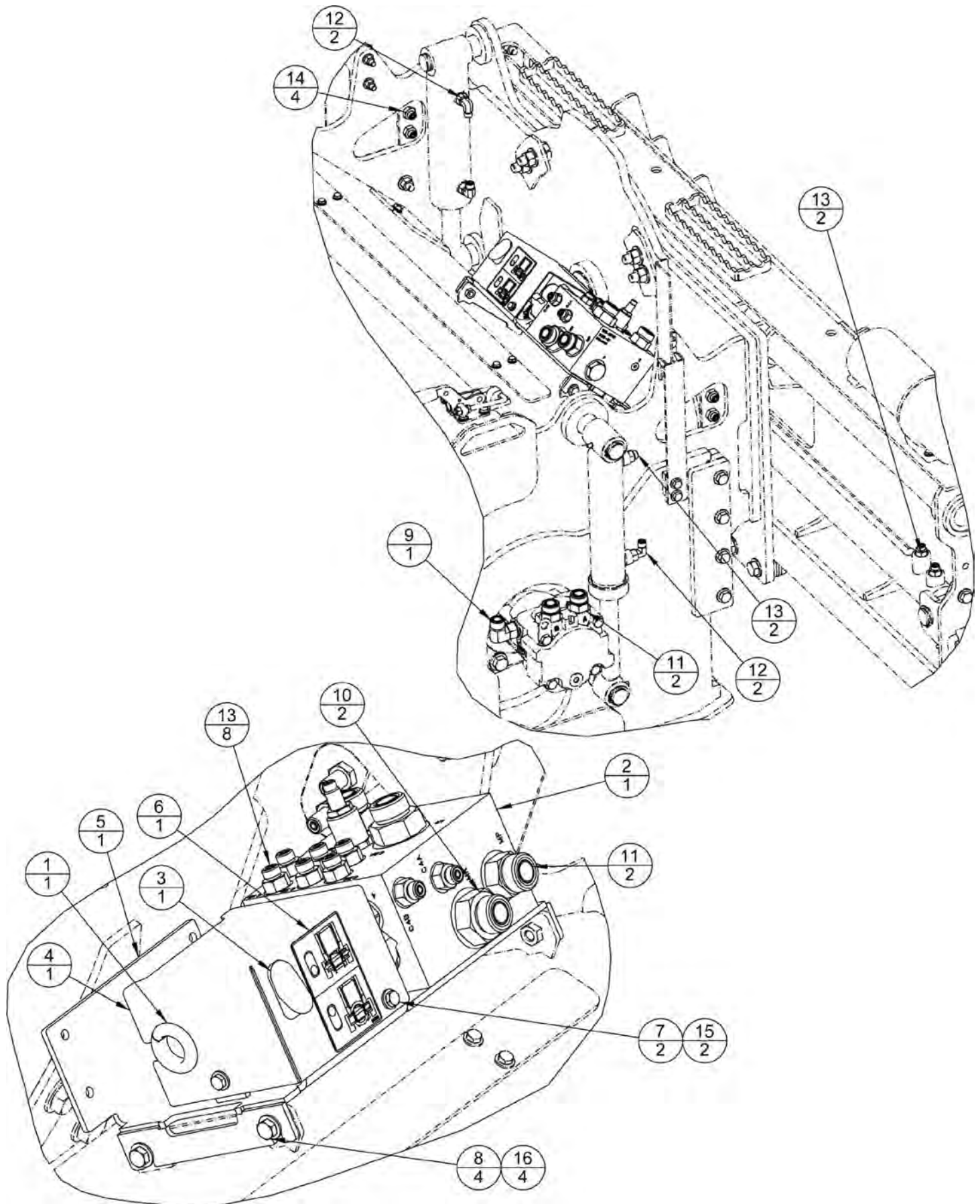
CP18, CP24, CP30, CP40 & CP48 DECAL PARTS (G5 AND G5HD)



CP18, CP24, CP30, CP40 & CP48 DECAL PARTS (G5 AND G5HD)

ITEM	QTY	ALL G5	ALL G5HD	DESCRIPTION
		PART NO.	PART NO.	
1	2	D0163	D0163	DECAL, FLYING OBJECTS
2	1	D0164	D0164	DECAL, READ MANUAL
3	2	D0165	D0165	DECAL, CRUSHING HAZARD
4	2	D0166	D0166	DECAL, ROTATING CUTTER
5	1	D0167	D0167	DECAL, INJECTION HAZARD
6	4	D0168	D0168	DECAL, LIFT POINT
7	4	D0169	D0169	DECAL, TIE DOWN
8	1	D0178	D0178	DECAL, TILT INDICATOR
9	1	D0184	D0184	DECAL, CASE DRAIN INFORMATION
10	1	D0247	D0247	DECAL, TOOTH MAINTENANCE
11	1	D0253	D0253	DECAL, EDGE OF CUT
12	1	D0254	D0254	DECAL, EDGE OF CUT
13	2	D0299	D0340	DECAL, DEPTH INDICATOR (NOTE ALL G5HD PLANERS USE D0340)

CP18, CP24, CP30, CP40 & CP48 3 HYDRAULICS PARTS (G5 AND G5HD)



CP18, CP24, CP30, CP40 & CP48 3 HYDRAULICS PARTS (G5 AND G5HD) (ALL 3 LINE SKID STEERS)

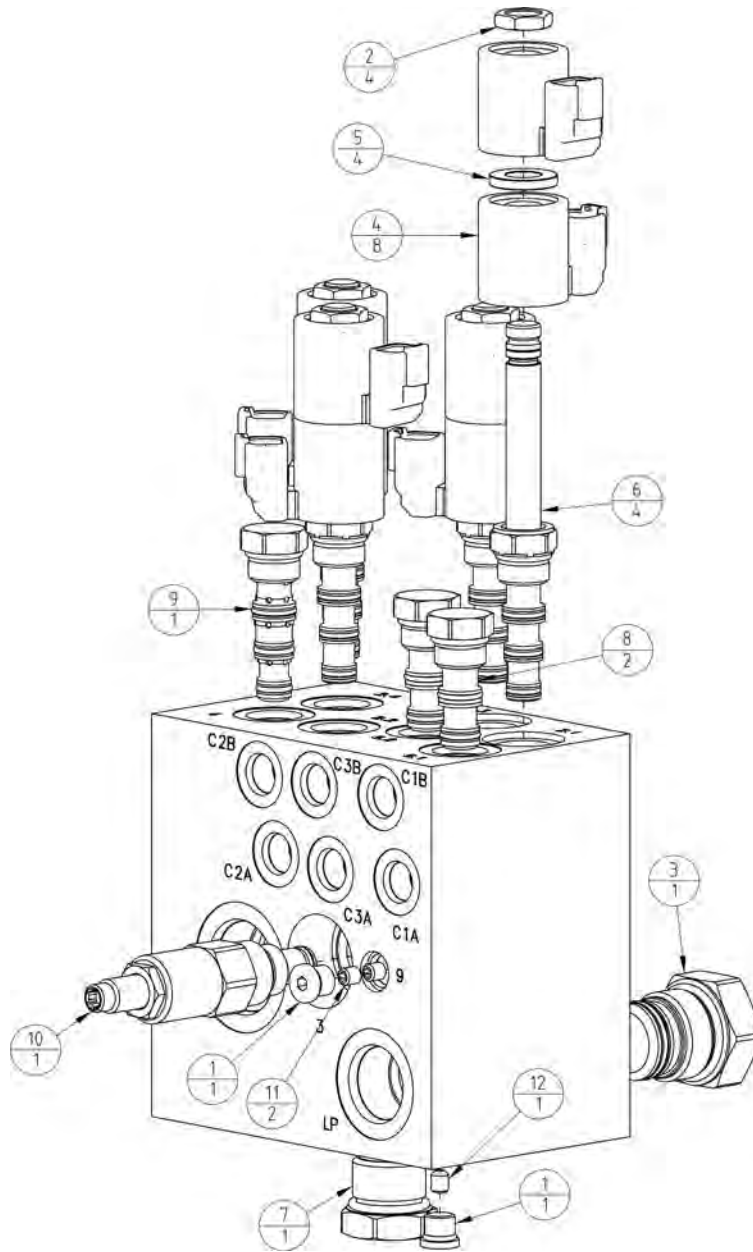
ALL G5 AND G5HD			
ITEM	QTY	PART NO.	DESCRIPTION
1	1	106-1489	GROMMET
2	1	106-6540 NOTE C	ASSEMBLY, VALVE 3 LINE DUAL DEPTH CP
3	1	106-6339 NOTE A	SWITCH, ROCKER 6 POSITION DPDT
4	1	106-6349 NOTE B	PLATE, SOLENOID COVER
5	1	106-6437	WELDMENT, VALVE MOUNT
6	1	D0328 NOTE A	DECAL, PLANER CONTROL
7	2	HB025L0075A	BOLT, 1/4-20 X 0.75 PLATED
8	4	HB038L0075A	BOLT, 3/8-16 X 0.75 PLATED
9	1	HF10C5OLO	FITTING, ELBOW 90 10 ORFS, 10 STOR
10	2	HF12-16F5OLO	FITTING, STRAIGHT 12ORFS 16SAE-ORB
11	4	HF12F5OLO	FITTING, STRAIGHT 12 ORFS 12 STOR
12	4	HF4_6C5OLO	FITTING, ELBOW 90 4 ORFS 6 STOR
13	12	HF4_6F5OLO	FITTING, STRAIGHT 4 ORFS 6 STOR
14	4	HF4WLO	FITTING, BULKHEAD STRAIGHT 4 ORFS
15	2	HW025NA	WASHER, 1/4 NARROW PLATED
16	4	HW038NA	WASHER, 3/8 NARROW PLATED

NOTE A : KUBOTA SSV SERIES LOADERS DO NOT USE A SWITCH OR DECAL. TILT AND SIDE SHIFT ARE SELECTED WITH JOYSTICK CONTROLS.

NOTE B: KUBOTA SSV SERIES LOADERS USE 106-6515 PLATE, SOLENOID COVER. THIS COVER DOES NOT HAVE A HOLE FOR THE SWITCH.

NOTE C: ALL LOADERS EXCEPT CATERPILLAR USE 106-6540, CATERPILLAR LOADERS USE 106-6541.

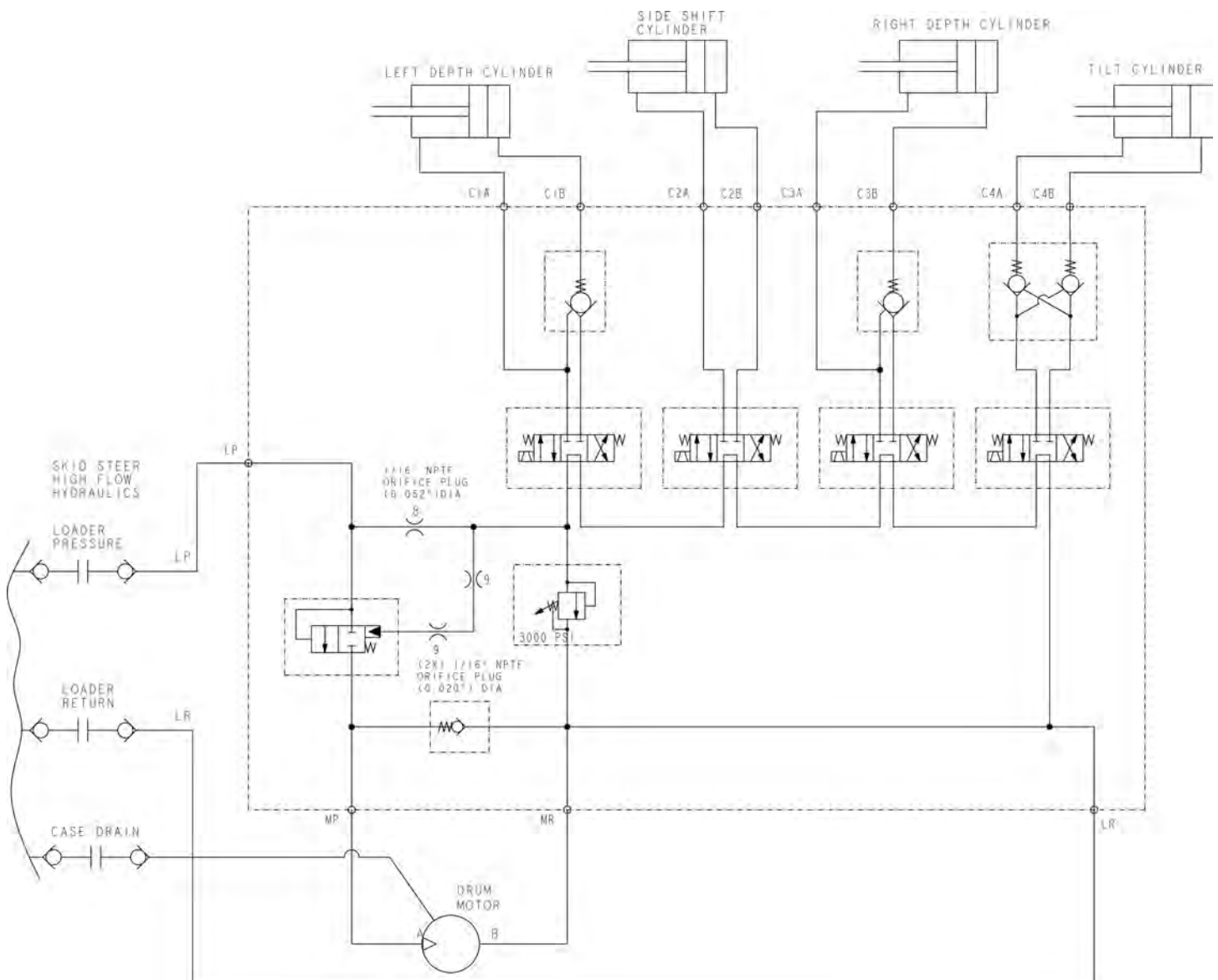
106-6540 & 106-6541 ASSEMBLY, VALVE 3 LINE DUAL DEPTH



ITEM	QTY	PART NO.	DESCRIPTION
1	2	HF4HP5ON	PLUG, 4 SAE-ORB RECESSED HEX
2	4	SO-0022	NUT, COIL SIZE 8 & 10
3	1	SO-0539	CARTRIDGE, PILOTED DIRECTIONAL (SEAL KIT:SO-0543)
4	8	SO-0558	COIL, 08 SIZE
5	4	SO-0559	WASHER, 08 SIZE COIL
6	4	SO-0020	CARTRIDGE, SOLENOID VALVE (SEAL KIT:SO-0182)
7	1	SO-0547	CARTRIDGE, CHECK VALVE (SEAL KIT:SO-0552)
8	2	SO-0054	CARTRIDGE, CHECK (SEAL KIT:SO-0405)
9	1	SO-0088	CARTRIDGE, DUAL CHECK VALVE(SEAL KIT:SO-0182)
10	1	SO-0540	CARTRIDGE, RELIEF (SEAL KIT:SO-0182)
11	1	SO-0553	PLUG, ORIFICE (0.05 in)
12	2	SO-0542	PLUG, ORIFICE (0.02 in)

NOTE: 106-6540 ASSEMBLY USES AN ALUMINUM MANIFOLD BLOCK AND IS RATED TO 3600 PSI, 106-6541 USES A DUCTILE IRON MANIFOLD BLOCK AND IS RATED TO 5000 PSI. INTERNAL COMPONENTS ARE IDENTICAL BETWEEN THE TWO ASSEMBLIES.

CP18, CP24, CP30, CP40 & CP48 3 LINE HYDRAULIC SCHEMATIC (ALL 3 LINE SKID STEERS)



CP18, CP24, CP30, CP40 & CP48 ELECTRICAL PARTS (NO ILLUSTRATIONS)

3 LINE WIRING HARNESS INFORMATION– ALL EXCEPT KUBOTA SSV SERIES

The following harnesses connect to a 106-6542 adapter harness. The 106-6542 connects to the planer valve tilt and side shift solenoids. Match wire colors to connect these harnesses to the 106-6542 harness. These cold planers are equipped with a switch to select either side shift or tilt.

SKID STEER MODEL

	<u>HARNESS #</u>
BOBCAT A, S and T SERIES (3 LINE)	106-3336 Assembly (3 components, see below)
CATERPILLAR D SERIES & LATER (3 LINE)	106-4947
CASE 400 SERIES & LATER (3 LINE)	106-0647
GEHL (3 LINE)	106-0647
JCB (3 LINE)	106-0647
JOHN DEERE A, B C SERIES (3 LINE)	106-1326
JOHN DEERE D SERIES & LATER (3 LINE)	106-4587
KUBOTA PRE SSV SERIES (3 LINE)	106-0647
NEW HOLLAND (3 LINE)	106-0647
VOLVO (3 LINE)	106-0647

3 LINE WIRING HARNESS INFORMATION– KUBOTA SSV SERIES

The KUBOTA SSV series use do not use a switch to select side shift or tilt. The trigger on the joystick is used to select one of these two functions. The 106-6498 harness connects directly to the planer valve. See Kubota SSV electrical schematic to connect this harness to the valve.

LOADER HARNESS SERVICE PARTS

<i>HARNESS #</i>	<i>LOADER SIDE CONNECTOR</i>	<i>LOADER SIDE SOCKET</i>	<i>LOADER SIDE TOOL</i>	<i>VALVE SIDE CONNECTOR</i>	<i>VALVE SIDE SOCKET</i>	<i>VALVE SIDE WEDGE</i>	<i>DIODE BOARD #</i>
106-0647	SO-0030 (14 PIN)	SO-0032	SO-0048 (BLUE)	SO-0031	SO-0032	SO-0034	SO-0264
106-0749	SO-0037 (8 PIN)	SO-0038	SO-0049 (GREEN)	SO-0031	SO-0032	SO-0034	SO-0324
106-0934	SO-0030 (14 PIN)	SO-0032	SO-0048 (BLUE)	SO-0031	SO-0032	SO-0034	SO-0324
106-1326	SO-0030 (14 PIN)	SO-0032	SO-0048 (BLUE)	SO-0031	SO-0032	SO-0034	SO-0264
106-4587	SO-0030 (14 PIN)	SO-0032	SO-0048 (BLUE)	SO-0031	SO-0032	SO-0034	SO-0264
106-4947	SO-0030 (14 PIN)	SO-0032	SO-0048 (BLUE)	SO-0031	SO-0032	SO-0034	SO-0264

BOBCAT A, S and T Series WIRING HARNESS INFORMATION

106-3336 ASSEMBLY FOR BOBCAT A, S AND T SERIES

106-6118 HARNESS: CONNECTS ACD COMPUTER TO SKID STEER LOADER

106-1031 ACD: COMPUTER (MOUNTED ON COLD PLANER)

106-1032 HARNESS: CONNECTS JUMPER WIRES TO ACD

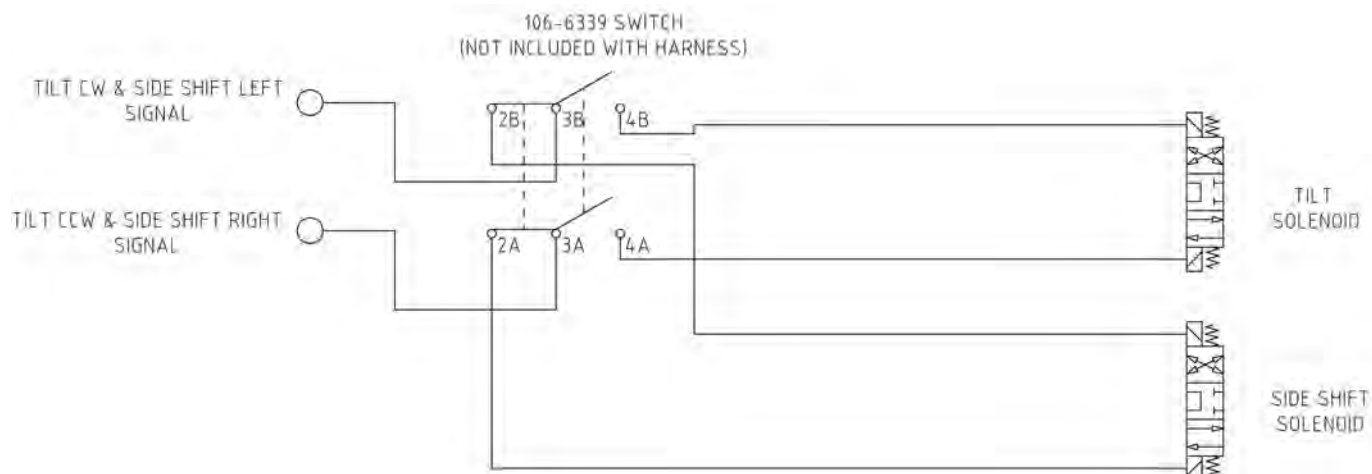
106-1217 JUMPER WIRE: CONNECTS 106-1032 HARNESS TO 106-6340 ADAPTER HARNESS.(6 REQUIRED)

CONNECT 106-1032 HARNESS TO 106-6542 JUMPER ADAPTER HARNESS BY USING DRAWING ON NEXT PAGE AND NOTES BELOW.

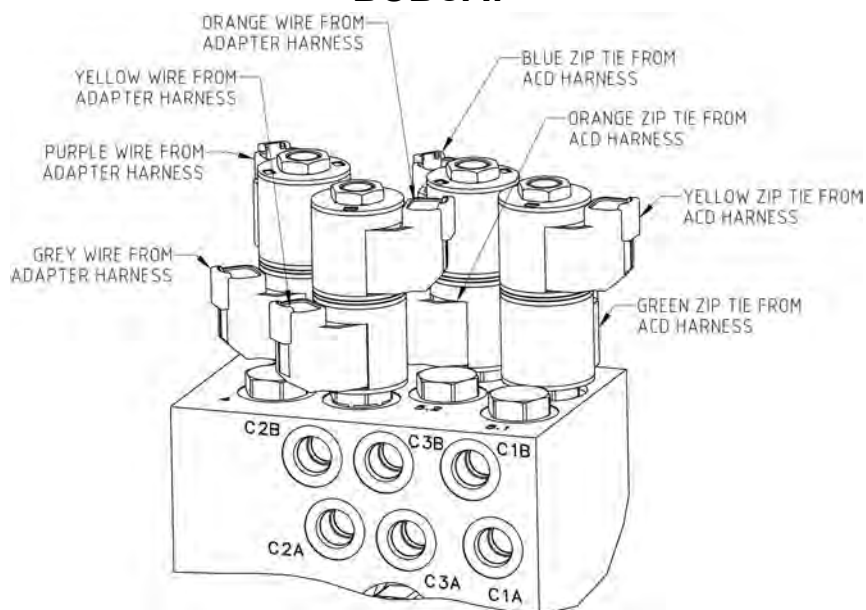
BOBCAT ACD CONNECTION NOTES:

- 106-6545 ADAPTER HARNESS CONNECTS THE ACD TO THE SWITCH AND ONLY THE TILT AND SIDESHIFT SOLENOIDS.
- -MATCH THE ADAPTER HARNESS ZIP TIE COLORS TO THE ACD HARNESS ZIP TIE COLORS. WHITE TO WHITE, GREY TO GREY.
- -CONNECT SWITCH LIKE ALL UNITS.
- -BLACK ZIP TIE WIRE ON ACD HARNESS IS NOT USED.

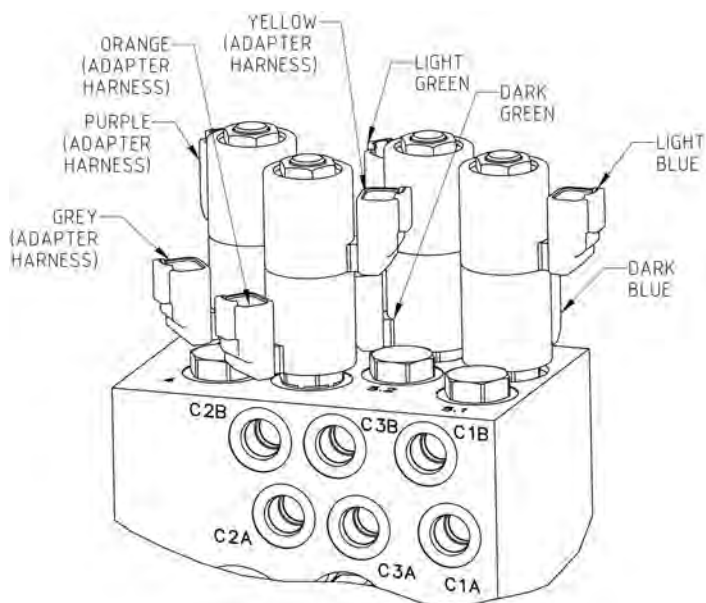
3 LINE ELECTRICAL SCHEMATIC (106-6542-ADAPTER HARNESS-USED ON ALL 3 LINE PLANERS EXCEPT KUBOTA SSV)



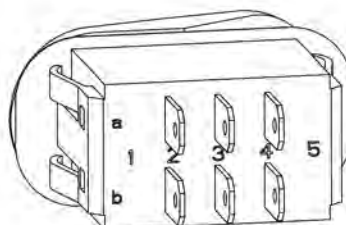
VALVE CONNECTIONS- BOBCAT



VALVE CONNECTIONS- EXCEPT BOBCAT AND KUBOTA (106-6542 ADAPTER HARNESS)



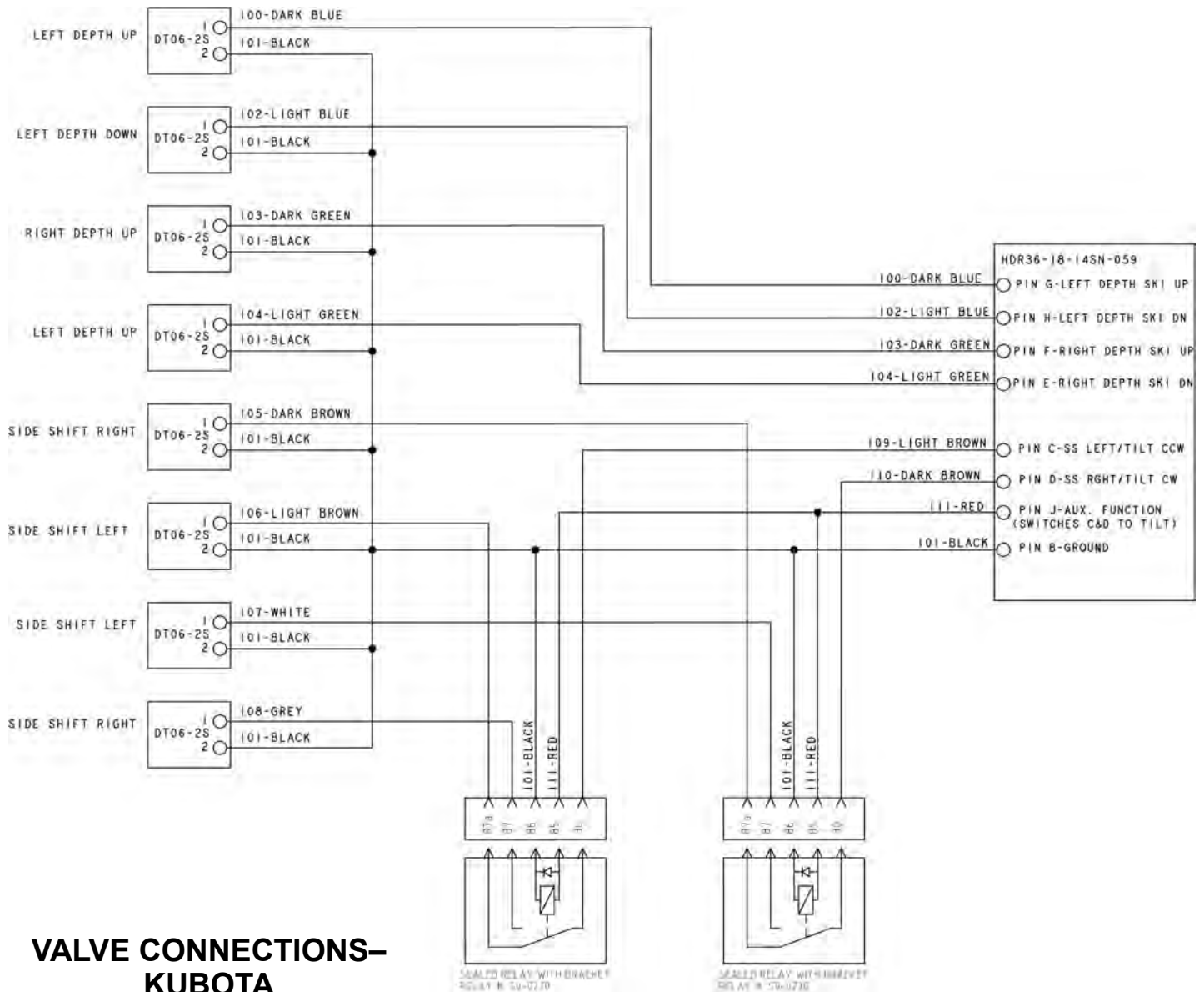
SWITCH CONNECTIONS



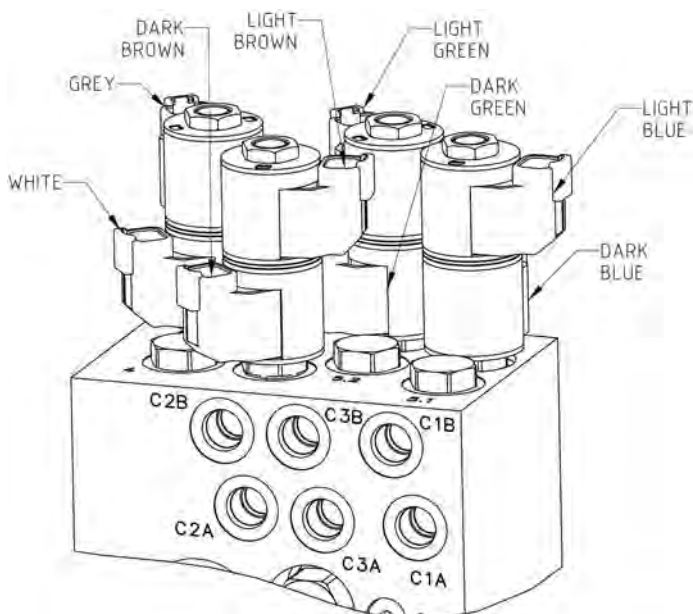
106-6542 ADAPTER HARNESS
CONNECTIONS TO SWITCH 106-6339

- a2: YELLOW
- a3: LT BROWN
- a4: GRAY
- b2: ORANGE
- b3: BROWN
- b4: PURPLE

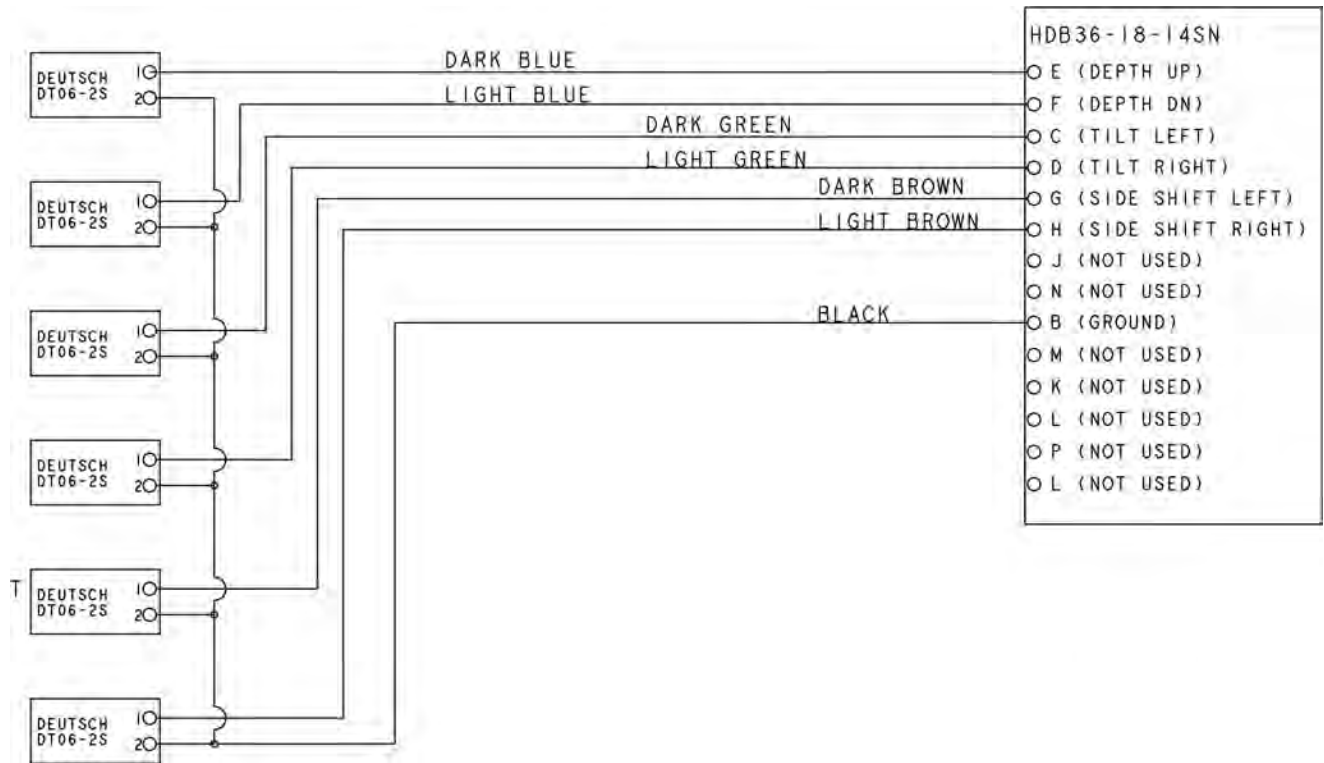
3 LINE ELECTRICAL SCHEMATIC (106-6498-LOADER HARNESS-USED ON KUBOTA SSV)



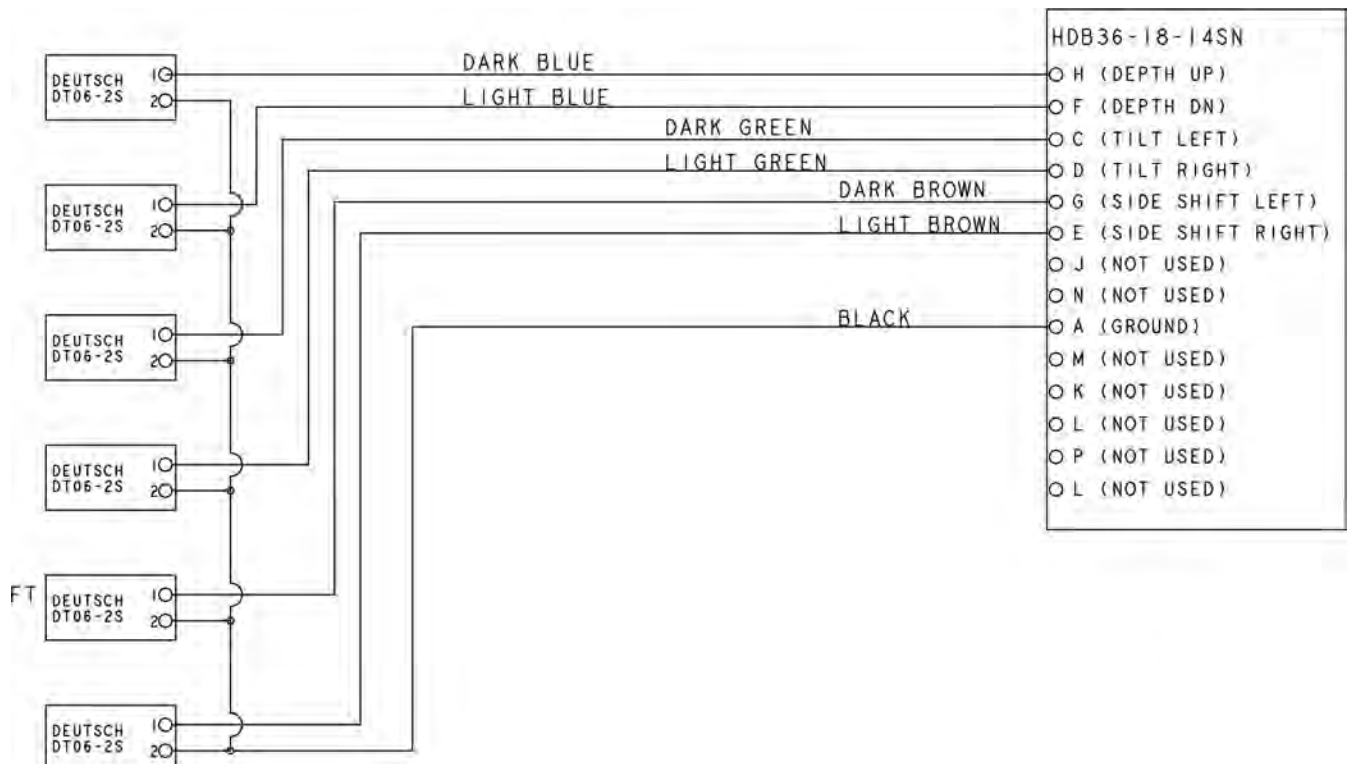
VALVE CONNECTIONS- KUBOTA



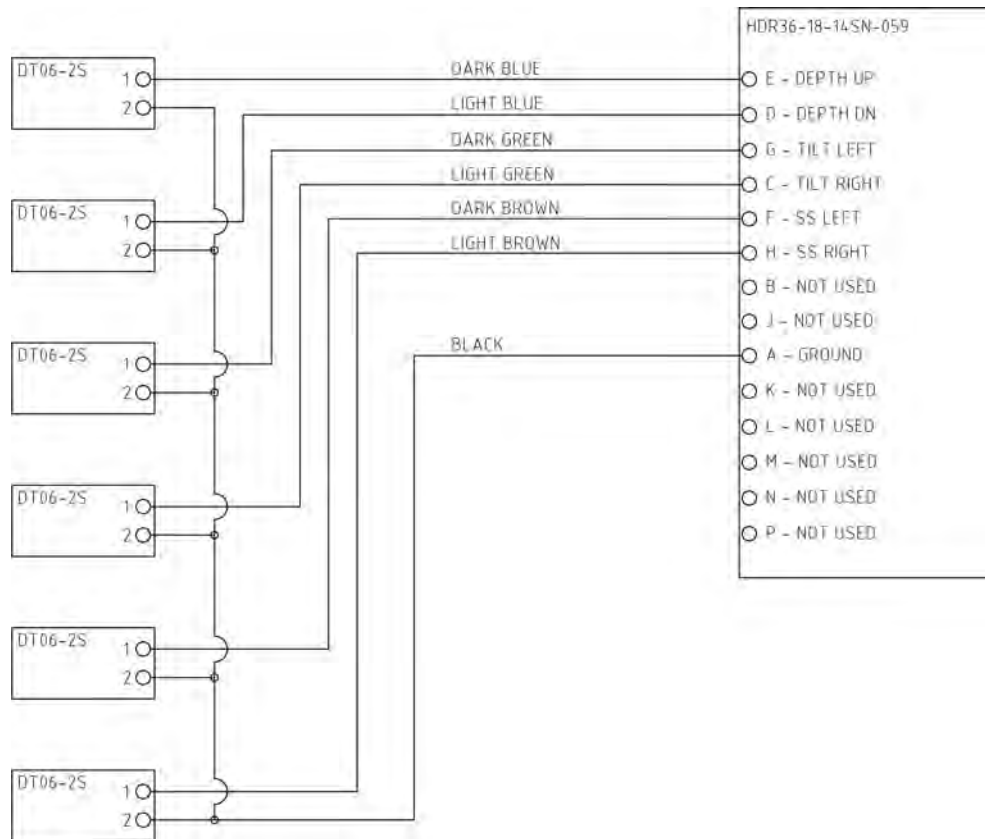
3 LINE ELECTRICAL SCHEMATIC (HARNESS NUMBER 106-0647)



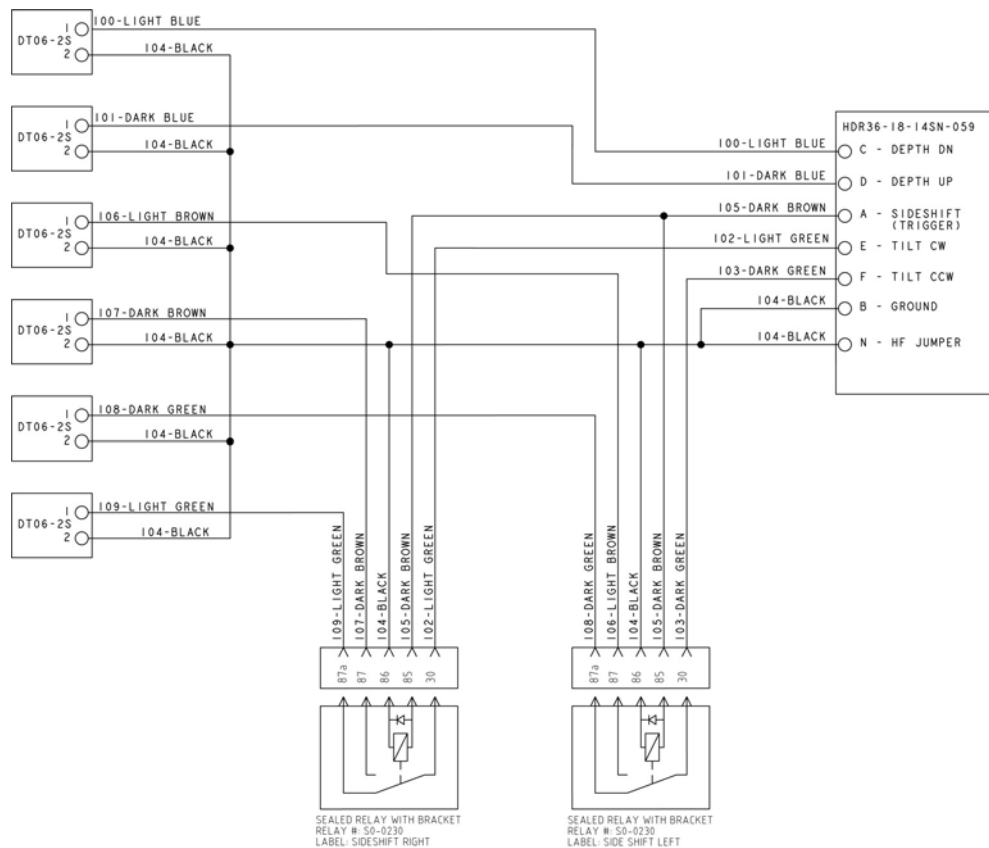
3 LINE ELECTRICAL SCHEMATIC (HARNESS NUMBER 106-1326)



3 LINE ELECTRICAL SCHEMATIC (HARNESS NUMBER 106-4587)



3 LINE ELECTRICAL SCHEMATIC (HARNESS NUMBER 106-4947)



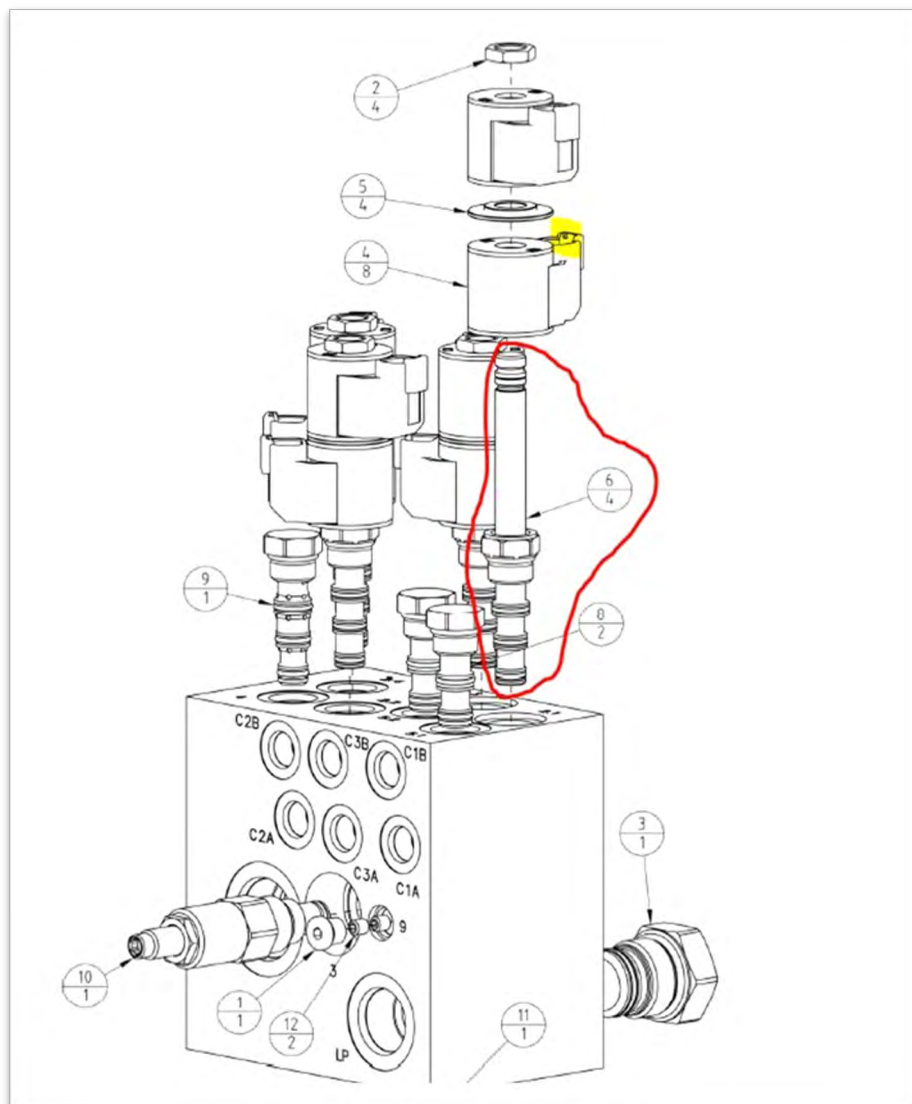
5.7 TROUBLESHOOTING DEPTH, TILT, AND SIDE SHIFT ISSUES.

STEP 1. Check the skidsteer for proper power output at each of the pins at the skid steer's connector, using the schematic for that particular harness. Electrical harness information can be found in this manual beginning on page 32. Power should be present when pressing the corresponding button on the skid steer's joystick. For instance, "depth up" might be pin E on the plug. If there is no power at all, check the attachment control harness fuse on the skidsteer. If there is no power some pins and not others, then there might be a broken wire in the harness on the skidsteer. If all pins check good, move to step 2.

STEP 2. Check for continuity from skid steer to each gray plug, at the end of the planer harness, where it plugs in to the solenoid coils on the hydraulic valve, highlighted in yellow. An easy way to check without an ohm meter is to swap plugs with another coil and see if the problem follows the plug. If so, you have a harness problem. If not, move to step 3.

STEP 3. You may have a defective coil (item 4). The coils become magnetic when energized, which is how the cartridges are shifted. If the coil has power at the plug, but isn't magnetic, replace the coil. Place a small steel screwdriver on the top of the cartridge valve stem to check for magnetism. Coil resistance should be 9.8 ohms $\pm 3\%$. If it is magnetic, move to step 4.

STEP 4. You may have a bad cartridge, an example is circled in red and item number 6. Swap the suspected faulty cartridge with the one next to it, and if the problem follows the cartridge, replace the cartridge.





PO Box 982, 807 McKay Ave S.
Alexandria, MN 56308
Toll Free: 877-378-4642
www.skidpro.com

SKID PRO WARRANTY

Skid Pro warrants above attachments for twelve months from date of shipment to the original owner. Warranty covers products to be free from defects in material and workmanship when properly set up and operated in accordance with Skid Pro's recommendations.

WARRANTY CLAIM PROCEDURE

All warranty claims must be submitted within the manufacturer's limited warranty period. Pictures and/or a video as well as a detailed description of the events leading up to the failed component(s) are required to properly document all potential warranty claims. To submit a warranty claim, contact your Skid Pro Product Guru or complete a [Warranty Claim Form](#) on our website and send it along with supporting pictures/video to sales@skidpro.com. A valid credit card is required to be on file with Skid Pro to begin processing a warranty claim. No warranty claim will be processed without a valid credit card on file. Upon receipt, the warranty claim information will be reviewed and once determined to be a valid claim, a return authorization number will be issued for the return of the defective part(s) if applicable and replacement part(s) will be shipped. If it is determined the defective parts are to be returned and they are not received by Skid Pro within 30 days of receiving the replacement parts, the buyer's credit card on file will be charged for the cost of the replacement parts plus any shipping charges. Tampering with the failed part (i.e. disassembling a motor or cylinder) will void the warranty.

EXCLUSIONS OF WARRANTY

Skid Pro's requirement for any issue with respect to attachments shall be limited to repairing or replacing the defective part, as this is a parts-only warranty and does not include labor to replace or install the part, interest accrued or payments made for financing, or downtime from resulting issue. Skid Pro has full technical support to assure customer replaces the part properly.

This warranty shall not apply to any attachment's wear items, or attachments that have been repaired or altered outside the Skid Pro factory in any way, or that has been subject to misuse, negligence, or accident beyond Skid Pro's recommended use and/or machine rated capacity.

This warranty is exclusive and in lieu of all other warranties and conditions. Skid Pro disclaims all other warranties and conditions, express or implied, including any implied warranties or conditions of merchantability or fitness for a particular purpose. In no event shall Skid Pro be liable for any special, incidental, indirect or consequential damage, whatsoever, including, but not limited to, loss or interruption of business, lost profits, or loss of machine use, whether based on contract, warranty, tort, negligence, strict liability, statute or otherwise, even if Skid Pro has been advised of the possibility of such damages.

Hoses and couplers are tested on the attachment prior to shipment and are excluded from the warranty. It is the responsibility of the operator to ensure adequate clearance and hose routing as each carrier machine differs and improper routing can lead to hose damage and premature failure. If hose length is an issue due to the style or type of carrier machine, it is the responsibility of the end user to source correctly sized hoses as they are outside of the normal distribution of carrier machines within the industry.

No agent, employee, or representative of Skid Pro has any authority to bind said company to any affirmation, representation, or warranty concerning its machinery and/or attachments except as specifically set forth herein. Any disagreement or dispute of warranty policy or customer expectations of product, soundness, functionality, or performance would take place in Douglas County, Alexandria, MN, where Skid Pro operates.