

Description 330 Tree Spade

Weight

DATE 25-11-2020

DWG. NO. 330-D03-R1

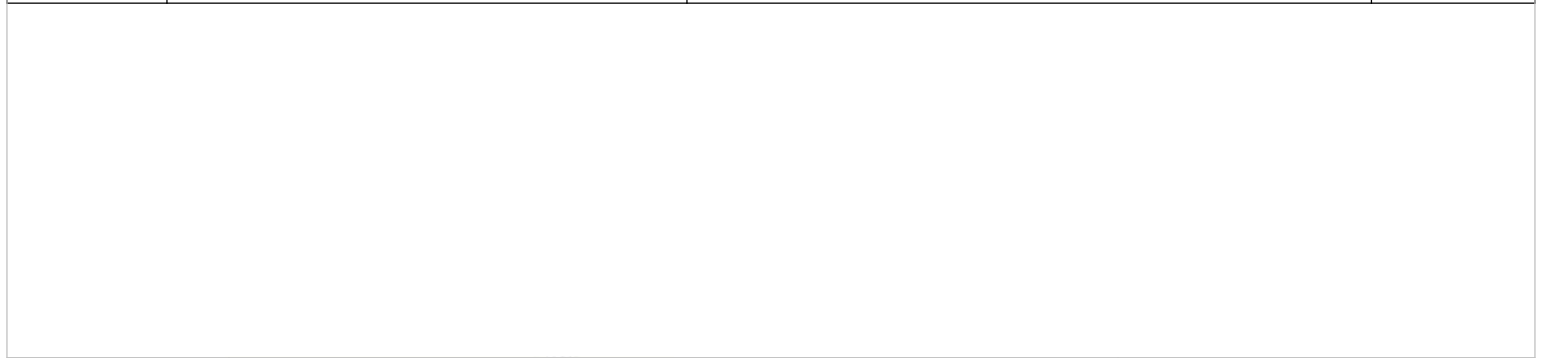
REV R1

DO NOT SCALE DRAWING

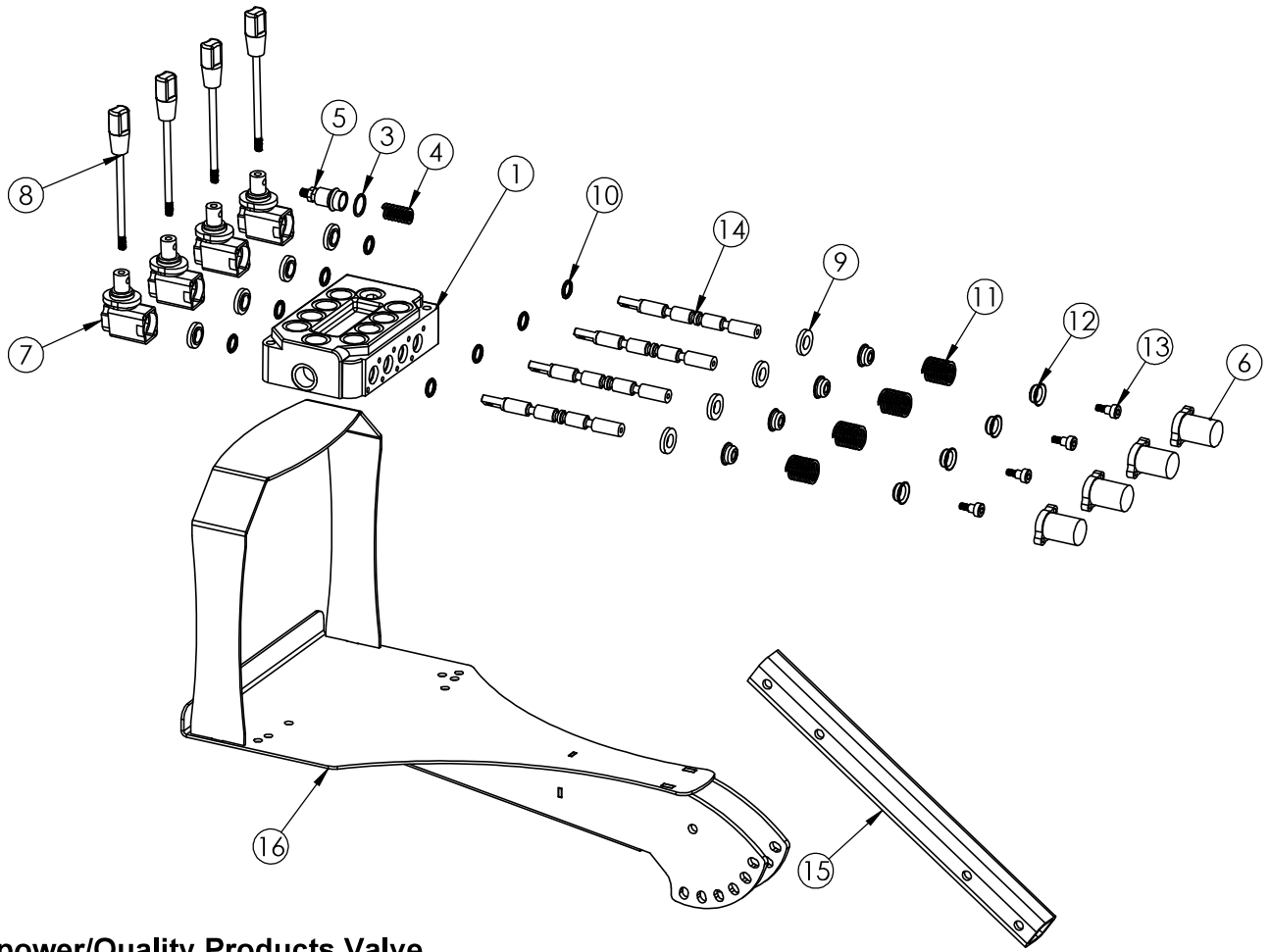
SCALE: 1:19

SHEET 1 OF 2

ITEM NO.	PART NUMBER	DESCRIPTION	QTY.
1	attachment assem	Skid Steer plate weldment	1
2	P2006	Swing Pin 1.5x9.38	1
3	T1002	Cylinder 2.5 x 16 x 23.5	1
4	Spade Section	Scoop, Mast, and Hydraulic Cylinder Assembly	3
5	Spade Tube	Scoop support mast	1
6	T2000	Blade Assembly	1
7	D001243	Spade Cyl Mount ST440, SS330, ST330	1
8	T2016	Spade Skid Plate	1
9	T1001	Cylinder 2.5 x 39.63 x 70.63	1
10	P2023	1x2.25 Snap Ring Pin	1
11	P2024	1x5.625 Snap Ring Pin	1
12	P2022	1 x 2.25" Swing snap ring pin, greaseable	1
13	D001028	1 x 5" Flange Greasable Pin	1



	Description		330 Tree Spade	
	Weight	DATE	25-11-2020	
DO NOT SCALE DRAWING	SCALE: 1:19	SHEET 2 OF 2	DWG. NO.	REV
			330-D03-R1	R1



Hi power/Quality Products Valve



Description

4 Lever Valve

Weight

DATE

25-11-2020

DO NOT SCALE DRAWING

SCALE: 1:20

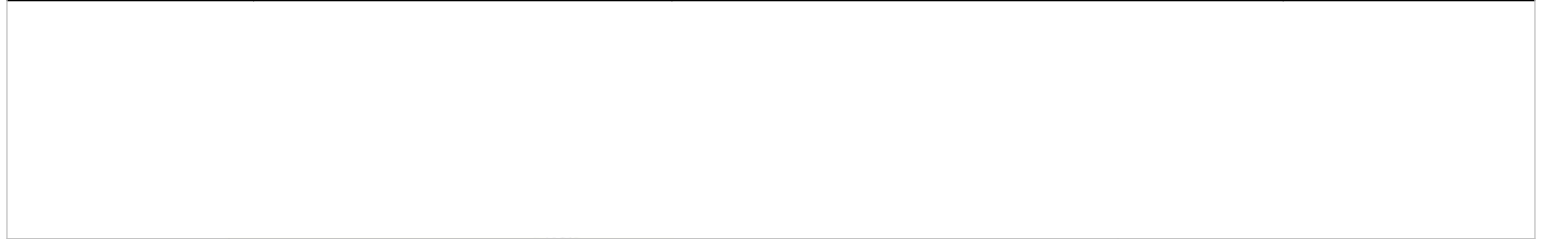
SHEET 1 OF 2

DWG. NO.

D005607-D03-R1

REV
R1

ITEM NO.	PART NUMBER	DESCRIPTION	QTY.
1	D005661	4 Lever Valve	1
2	D005680	Relief valve	1
3	D005656	Relief Valve Washer	1
4	D005657	Relief Valve Spring	1
5	D005658	System Relief Valve	1
6	D005652	Plunger Cover	4
7	D005646	Pivot Block	4
8	H2089	Pivot Arm	4
9	D005648	Plunger Washer	8
10	H2084	Plunger Seal	8
11	D005650	Plunger Spring	4
12	D005649	Spring Sleeve	8
13	D005651	Plunger Bolt	4
14	D005647	Plunger	4
15	T2002	Bottom Valve Arm	1
16	D001601	Manual control arm assembly	1



	Description		4 Lever Valve	
	Weight	DATE	25-11-2020	
DO NOT SCALE DRAWING	SCALE: 1:20	SHEET 2 OF 2	DWG. NO.	REV
			D005607-D03-R1	R1

5

4

3

2

1